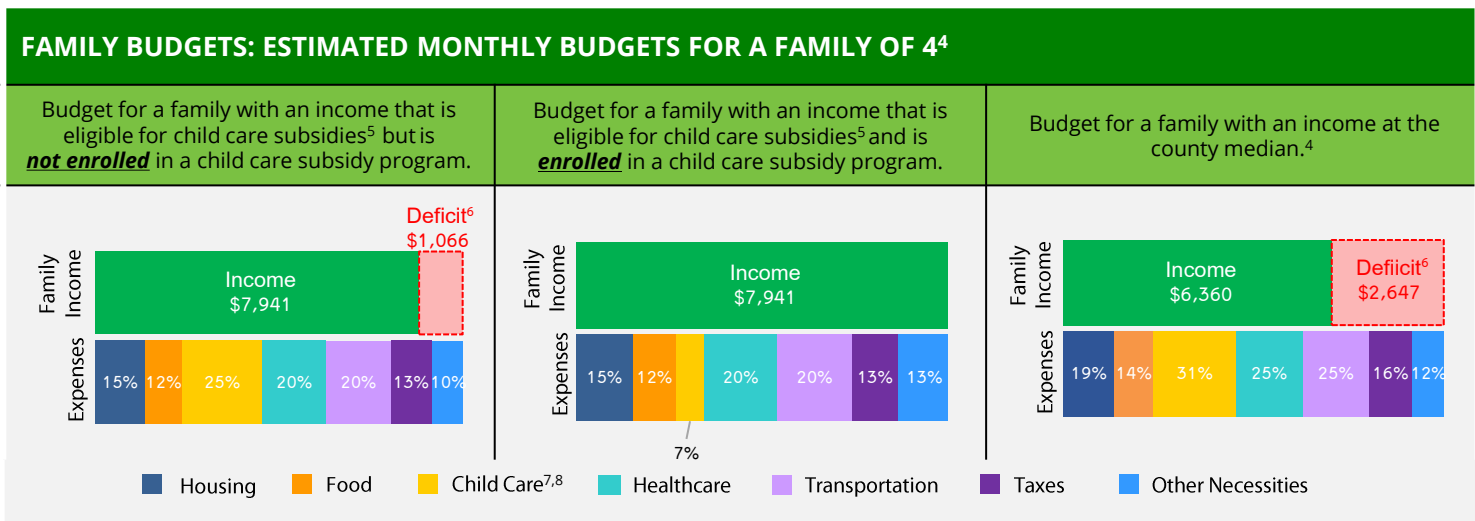


The 2023 California Child Care Portfolio, the 14th edition of this biennial report, offers a comprehensive look at licensed child care supply, demand, and costs across the state and within each county. It also includes data on population, poverty, and family budgets. Local child care Resource and Referral programs (R&Rs) played a key role in collecting these data. R&Rs assist parents in finding child care that meets their family's needs while also supporting child care providers with resources and licensed capacity-building efforts in their communities. To access the full report summary and county data, visit www.rrnetwork.org.

| POPULATION ¹ | COUNTY | | | CALIFORNIA | | |
|---------------------------|--------|--------|--------|------------|------------|--------|
| | 2021 | 2023 | CHANGE | 2021 | 2023 | CHANGE |
| Total number of residents | 82,256 | 83,297 | 1% | 39,246,702 | 39,109,070 | -0.4% |
| Number of children 0-12 | 17,368 | 16,968 | -2% | 6,328,862 | 6,077,962 | -4% |
| Under 2 years | 2,255 | 2,369 | 5% | 861,008 | 830,631 | -4% |
| 2 years | 1,194 | 1,100 | -8% | 460,224 | 407,630 | -11% |
| 3 years | 1,305 | 1,151 | -12% | 469,378 | 443,300 | -6% |
| 4 years | 1,389 | 1,193 | -14% | 484,018 | 455,053 | -6% |
| 5 years | 1,453 | 1,300 | -11% | 493,582 | 464,560 | -6% |
| 6-10 years | 6,947 | 6,973 | 0.4% | 2,525,290 | 2,476,740 | -2% |
| 11-12 years | 2,825 | 2,882 | 2% | 1,035,362 | 1,000,048 | -3% |

| POVERTY ² | COUNTY | | | CALIFORNIA | | | % OF FAMILIES BELOW FEDERAL POVERTY LINE | |
|----------------------------------------------------------|--------|--------|--------|------------|-----------|--------|------------------------------------------|-----|
| | 2021 | 2023 | CHANGE | 2021 | 2023 | CHANGE | COUNTY | CA |
| Number of people living below federal poverty line | 12,420 | 12,939 | 4% | 4,733,036 | 4,588,687 | -3% | | |
| Number of children 0-5 living below federal poverty line | 1,926 | 1,254 | -35% | 406,369 | 361,465 | -11% | | |
| Children enrolled in subsidized child care ³ | 964 | 1,094 | 13% | 372,938 | 389,213 | 4% | | |
| | | | | | | | 19% | 12% |



1. California Department of Finance Population Projections (2021 & 2023).
2. American Community Survey (ACS) 1-Year Poverty Estimates (2021 & 2023).
3. California Department of Social Services (CDSS), CDD 801A Monthly Child Care Report (July 2021); CDSS, CW115 Child Care Monthly Report (July 2021); CDSS, Direct Service Contract Enrollments (October 2023); California Department of Education (CDE), California State Preschool Program Enrollment (October 2021 & 2023).
4. Family expenses and county median income are based on the Economic Policy Institute (EPI) Family Budget Calculator (2024) and the National Database of Childcare Prices, Women's Bureau, U.S. Department of Labor (2019-2022).
5. CDSS income eligibility ceiling for a family of 4 (July 2022 – June 2023).
6. Deficit refers to the additional income required to cover the total cost of all expenses.
7. CDSS Family Fee for a family of 4 at the income eligibility ceiling (July 2022 – June 2023).
8. National Database of Childcare Prices, Women's Bureau, U.S. Department of Labor (2019-2022). Estimates are based on each state's Market Rate Survey. Figures reflect median full-time costs for one infant in a licensed family child care home and one preschooler in a licensed child care center.

LICENSED CHILD CARE SUPPLY AND CHILD CARE REQUESTS

| SITES AND SPACES BY AGE AND TYPE ⁹ | CHILD CARE CENTERS | | | FAMILY CHILD CARE HOMES | | | CHILD CARE REQUESTS ¹⁰ | |
|-----------------------------------------------|--------------------|-------|--------|-------------------------|------|--------|-----------------------------------|-----|
| | 2021 | 2023 | CHANGE | 2021 | 2023 | CHANGE | | |
| Total number of sites | 21 | 21 | 0% | 66 | 74 | 12% | Under 2 years | 38% |
| Total number of spaces | 1,093 | 1,002 | -8% | 724 | 790 | 9% | 2-5 years | 36% |
| Under 2 years | 53 | 97 | 83% | | | | 6 years and older | 26% |
| 2-5 years | 832 | 832 | 0% | | | | | |
| 6 years and older | 208 | 73 | -65% | | | | | |

38%

 Licensed child care programs participating in the **Child Care Food Program⁹**
10%

 Licensed child care centers with **one or more federal, state, or local contracts⁹**

LICENSED CHILD CARE SCHEDULES, COSTS, AVAILABILITY, AND CHILD CARE REQUESTS

| SCHEDULE ⁹ AND COST ¹¹ | CHILD CARE CENTERS | FAMILY CHILD CARE HOMES | CHILD CARE REQUESTS ¹⁰ | |
|----------------------------------------------------|--------------------|-------------------------|-------------------------------------------------------------|-----------|
| Full-time and part-time spaces | 41% | 72% | AGES | FULL-TIME |
| Only full-time spaces | 5% | 28% | Under 2 years | 95% |
| Only part-time spaces | 54% | 0% | 2 years | 100% |
| Sites offering evening, weekend, or overnight care | 10% | 34% | 3 years | 100% |
| Infant care | \$1,582 | \$1,185 | 4 years | 100% |
| Toddler care | \$950 | \$1,045 | 5 years | 100% |
| Preschool care | \$772 | \$975 | REQUESTS FOR CARE DURING NONTRADITIONAL HOURS ¹⁰ | |

MAJOR REASONS FAMILIES SEEK CHILD CARE^{10,12}

68%

Employment

16%

Parent seeking employment

11%

Parent in school or training

Evening/weekend/overnight care

5%

LICENSED CHILD CARE AVAILABILITY¹³

COUNTY

| | 2021 | 2023 | CHANGE |
|-----------------------------------------------------------------------------------------------------|------|------|--------|
| Children age 0-12 with parents in the labor force for whom a licensed child care space is available | 26% | 21% | -5% |

LANGUAGE

LANGUAGES SPOKEN BY AT LEAST ONE CENTER STAFF^{9,12}

English 100%, Spanish 43%

LANGUAGES SPOKEN BY FAMILY CHILD CARE PROVIDER^{9,12}

English 89%, Spanish 36%, Sign Language 1%

LANGUAGE SPOKEN AT HOME¹⁴

English only 75%

Spanish 18%

Asian/Pacific Island Language 6%

Other 2%

9. Resource and Referral (R&R) databases (2021 & 2023). CDSS, Community Care Licensing Division, Open Child Care Facilities List as of August 9, 2023.

10. R&R child care referrals (April – June 2023). CDSS R&R Child Care Service Data Report (April – June 2023).

11. National Database of Childcare Prices, Women's Bureau, U.S. Department of Labor (2019-2022). Figures reflect median full-time monthly estimates based on each state's Market Rate Survey.

12. Percentages may exceed 100% when multiple options are chosen.

13. ACS Microdata and R&R databases (2021 & 2023), calculated by KidsData.

14. ACS 1-Year Language Spoken at Home Estimates (2023).

 For more information about child care in **YUBA:**

Children's Home Society of California

530-673-7503

www.chs-ca.org