




California Child Care Resource & Referral
NETWORK

FIRST5
ASSOCIATION OF CALIFORNIA



Covid Vaccine Outreach and Distribution to Child Care Workers

February 17, 2021

Agenda



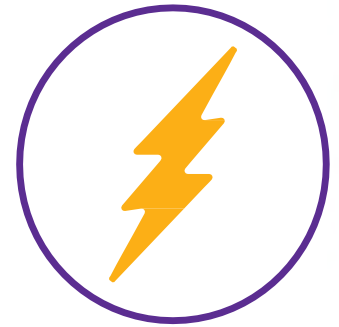
1. Welcome and Gather (*5 min*)
2. Vaccine Outreach and Distribution Planning, Approaches, and Partnership Efforts: Local Examples (*45 min*)
 - a. San Diego
 - b. San Joaquin
 - c. Los Angeles
3. Small Group Discussions (*30 min*)
4. Wrap Up and Next Steps (*5 min*)

Local Example: San Diego



– Presenters:

- **Rick Richardson**, President and CEO of Child Development Associates and First 5 San Diego Commissioner
- **Kim McDougal**, ED, Childcare Resource Services, YMCA of San Diego
- **Alethea Arguilez**, ED, First 5 San Diego



SUPPORTING OUR COMMUNITY THROUGH COVID-19



FOR YOUTH DEVELOPMENT®
FOR HEALTHY LIVING
FOR SOCIAL RESPONSIBILITY

YMCA CHILDCARE RESOURCE SERVICE
CHILDCARE DISASTER COUNCIL (CCDC)



CHILDCARE DISASTER COUNCIL (CCDC)

Vision:

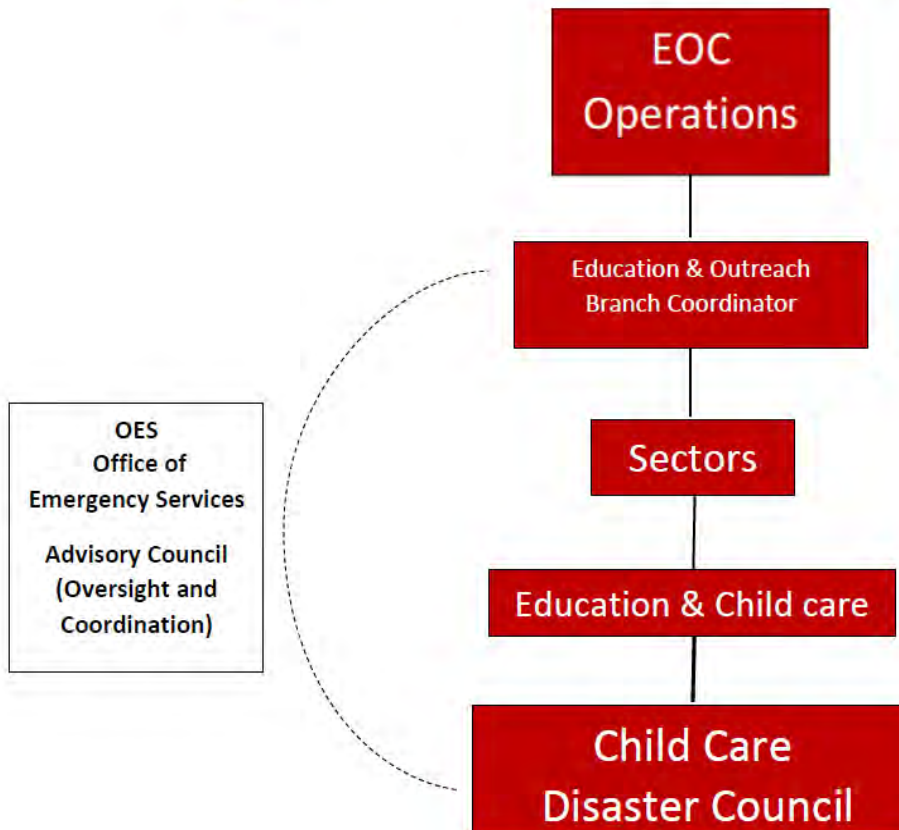
The Vision of the Child Care Disaster Council is to support the child care needs of the essential workforce in response to the COVID19 global pandemic.

Purpose:

- Assess child care needs and capacity
- Support child care community in service continuity
- Advise the OES and EOC on child care strategy
- Formal communication channel with child care field



Child Care Disaster Council



APPROACH

- Establish workgroup with operational knowledge of local childcare system (COE, R&R, AP & First 5)
- Considerations included:
 - Childcare provider type
 - Capacity of childcare provider type
 - Diversity of childcare provider field
 - Language
 - Technology
 - Hours of Operation
 - Levels of Trust

PLAN HIGHLIGHTS

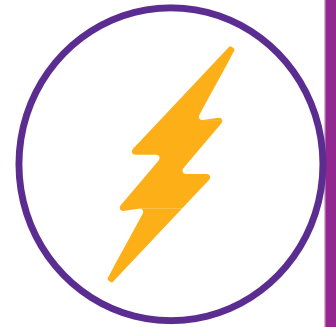
Communication and Outreach

Documentation Determination

Resources & Tools

LESSONS LEARNED

- Champion for establishment of a childcare sector within the County EOC
- Establishing a 2 way communication channel between the community and the County leadership
- Educate decision makers about diversity of the childcare field
- Establishing the childcare field as a critical community infrastructure
- Steward NEW relationships on behalf of the childcare field



QUESTIONS

Local Example: San Joaquin



– Presenters:

- **Lani Schiff-Ross**, ED, First 5 San Joaquin
- **Tiffany Phovixay**, Chief Operations Officer, San Joaquin County Family Resource & Referral Center

COVID Vaccine Outreach and Distribution to Child Care Workers Joint Webinar of R&R Network and First 5 Association Friday, February 17, 2021

Lani Schiff-Ross, First 5 San Joaquin

Tiffany Phovixay, Family Resource & Referral Center of San Joaquin County



VACCINES AVAILABLE FOR CHILD CARE PROVIDERS





The First 5 San Joaquin (F5SJ) and Family Resource & Referral Center (FRRC) wholeheartedly believe that childcare providers are not only essential workers, they are the backbone of the economy, thus, their priority is key to recovery of the economy. Our essential workers can focus on their jobs when their children are in quality care.

Partnerships are key - we are well aware can't do this alone. From the onset of COVID-19, F5SJ and FRRC have been working hand in hand in trying to meet some of the needs of our child care providers.

F5SJ and FRRC are also working with other agencies - San Joaquin County Office of Education and Child Abuse Prevention Council. The collaborative work has included sending out a survey on childcare needs in the community to staying in contact with providers in order to learn helpful ways to support them.

Relationships and Connections Matter

- ▶ FRRC - daily contact with Office of Emergency Services due to having 211 with 10,000 calls a month - many appts being made only through 211.
- ▶ F5SJ - almost daily contact with Public Health due to previous work as an employee and multiple joint collaboratives.
- ▶ Key to this success - Public Health Officer is a First 5 Commissioner and understands the value of childcare providers.
- ▶ Success comes with time and investment, not overnight.



The Roller Coaster Vaccine

Planning and Dreaming for a Long Time - Soon - a Reality

Preparation


Development of the Self-Attestation form for Family Friends and Neighbors/Licensed Exempt Providers

Family, Friend, and Neighbor & Licensed Exempt Childcare Provider Vaccine Form

If you work with Family Resource and Referral Center, please contact them about documentation you can bring with you to get the vaccine.

Please read and fill below:

The information I provide below is true and complete to the best of my knowledge. I am aware that this information is subject to review and verification and if this information is not true, I may not be able to receive the vaccination.



I, _____ (print your name) provide childcare for _____ (relationship to child, example – grandchildren, my neighbor's child, etc.): on these days _____ (list days, for example – only Mondays, or Monday-Friday) for approximately _____ (list the number of hours) hours per week.

Print Full Name of Parent/Guardian

Parent/Guardian Phone Number


Parent/Guardian's Signature

Date


Signature of Child Care Provider

Date


For more information on the COVID-19 vaccination, visit the San Joaquin County website at [siready.org](https://www.sjcounty.org/ready)



**CHILD ABUSE
PREVENTION
COUNCIL**
401 34th, JOAQUIN, CALIF.



Family Resource & Referral Center
Strengthening Families, Empowering Communities



FIRST
San Joaquin

Development of the Flyer



If All Goes According To The World of Lani And Tiffany...

- ▶ 300 CHILD CARE PROVIDERS WILL BE VACCINATED IN THE NEXT WEEK
- ▶ Registration will go through 211, this assists with quality control and helps the focus remain on childcare providers
- ▶ The registration process is seamless for providers
- ▶ Email blast will go out soon, with the expectation that it fills up fast



Challenges and Next Steps!

Development of relationship with Blue Shield ❤️



ADVICE

- ▶ It's all about partnerships and relationships, and all of that takes time, and presence.
- ▶ Collateral material ready for a clinic that might happen tomorrow.
- ▶ 'Gentle Encouragement' to decision makers. All.The.Time. Help others see the connections you have in the community that will help their job be easier.



Local Example: Los Angeles

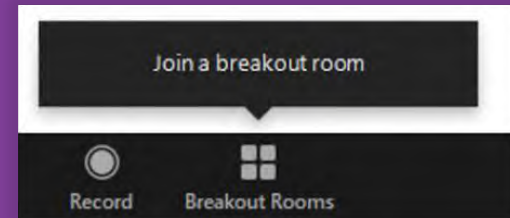


– Presenters:

- **Becca Patton**, First 5 LA
- **Debra Colman**, LA Public Health
- **Cristina Alvarado**, Child Care Alliance of Los Angeles

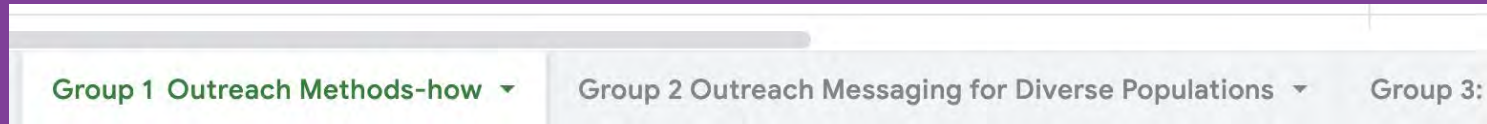
Breakout Room Discussions

- Two 15 minute sessions, 30 minutes total
- Group 1: Outreach methods – *How*
- Group 2: Outreach messages for diverse populations – *What*
- Group 3: Q&A with San Diego Presenters
- Group 4: Q&A with Los Angeles Presenters
- Group 5: Q&A with San Joaquin Presenters
- Group 6: Verification of child care providers
- Group 7: Partnerships – *How to/who with*
- Group 8: Ideas and innovations for distribution
- *Don't see the topic you want to discuss? Message Gretchen Howard to create an additional breakout room*



Breakout Room Notes

- Please use the Google Docs link in the Chat to **share ideas and links to resources**
- There is **one tab per Breakout Room**, which you can select from the bottom of the spreadsheet



- If you are unable to type into the spreadsheet, please click “Open with Google Sheets”





Thank you!

- Visit covid19.ca.gov/vaccines/ & toolkit.covid19.ca.gov/partners/ for more resources
- Email heart@rrnetwork.org with questions or resources to share