

Tehama County

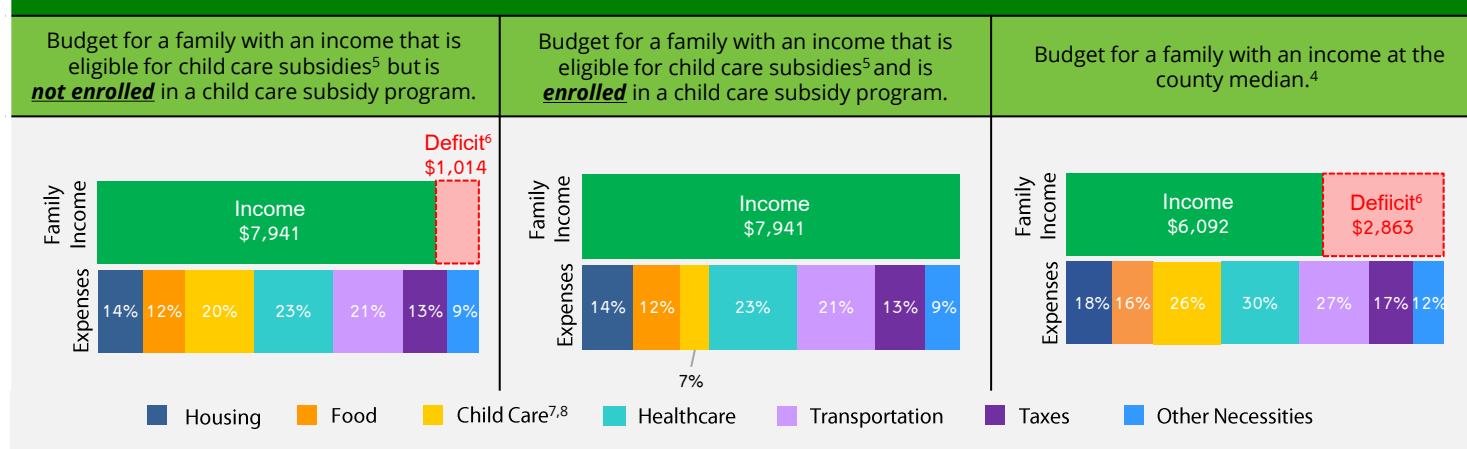
Family & Child Data

The 2023 California Child Care Portfolio, the 14th edition of this biennial report, offers a comprehensive look at licensed child care supply, demand, and costs across the state and within each county. It also includes data on population, poverty, and family budgets. Local child care Resource and Referral programs (R&Rs) played a key role in collecting these data. R&Rs assist parents in finding child care that meets their family's needs while also supporting child care providers with resources and licensed capacity-building efforts in their communities. To access the full report summary and county data, visit www.rrnetwork.org.

POPULATION ¹	COUNTY			CALIFORNIA		
	2021	2023	CHANGE	2021	2023	CHANGE
Total number of residents	65,424	64,677	-1%	39,246,702	39,109,070	-0.4%
Number of children 0-12	11,569	11,038	-5%	6,328,862	6,077,962	-4%
Under 2 years	1,574	1,544	-2%	861,008	830,631	-4%
2 years	833	744	-11%	460,224	407,630	-11%
3 years	769	811	5%	469,378	443,300	-6%
4 years	821	830	1%	484,018	455,053	-6%
5 years	976	770	-21%	493,582	464,560	-6%
6-10 years	4,595	4,516	-2%	2,525,290	2,476,740	-2%
11-12 years	2,001	1,823	-9%	1,035,362	1,000,048	-3%

POVERTY ²	COUNTY			CALIFORNIA			% OF FAMILIES BELOW FEDERAL POVERTY LINE	
	2021	2023	CHANGE	2021	2023	CHANGE	COUNTY	CA
Number of people living below federal poverty line	9,663	8,910	-8%	4,733,036	4,588,687	-3%	15%	12%
Number of children 0-5 living below federal poverty line	384	1,530	298%	406,369	361,465	-11%		
Children enrolled in subsidized child care ³	937	946	1%	372,938	389,213	4%		

FAMILY BUDGETS: ESTIMATED MONTHLY BUDGETS FOR A FAMILY OF 4⁴



1. California Department of Finance Population Projections (2021 & 2023).
2. American Community Survey (ACS) 1-Year Poverty Estimates (2021 & 2023).
3. California Department of Social Services (CDSS), CDD 801A Monthly Child Care Report (July 2021); CDSS, CW115 Child Care Monthly Report (July 2021); CDSS, Direct Service Contract Enrollments (October 2023); California Department of Education (CDE), California State Preschool Program Enrollment (October 2021 & 2023).
4. Family expenses and county median income are based on the Economic Policy Institute (EPI) Family Budget Calculator (2024) and the National Database of Childcare Prices, Women's Bureau, U.S. Department of Labor (2019-2022).
5. CDSS income eligibility ceiling for a family of 4 (July 2022 – June 2023).
6. Deficit refers to the additional income required to cover the total cost of all expenses.
7. CDSS Family Fee for a family of 4 at the income eligibility ceiling (July 2022 – June 2023).
8. National Database of Childcare Prices, Women's Bureau, U.S. Department of Labor (2019-2022). Estimates are based on each state's Market Rate Survey. Figures reflect median full-time costs for one infant in a licensed family child care home and one preschooler in a licensed child care center.

Tehama County

Child Care Data

LICENSED CHILD CARE SUPPLY AND CHILD CARE REQUESTS

SITES AND SPACES BY AGE AND TYPE ⁹	CHILD CARE CENTERS			FAMILY CHILD CARE HOMES			CHILD CARE REQUESTS ¹⁰	
	2021	2023	CHANGE	2021	2023	CHANGE		
Total number of sites	29	25	-14%	55	55	0%	Under 2 years	67%
Total number of spaces	856	811	-5%	620	634	2%	2-5 years	33%
Under 2 years	103	63	-39%				6 years and older	0%
2-5 years	753	649	-14%					
6 years and older	0	99	N/A					

63%Licensed child care programs participating in the **Child Care Food Program⁹****72%**Licensed child care centers with **one or more federal, state, or local contracts⁹**

LICENSED CHILD CARE SCHEDULES, COSTS, AVAILABILITY, AND CHILD CARE REQUESTS

SCHEDULE ⁹ AND COST ¹¹	CHILD CARE CENTERS	FAMILY CHILD CARE HOMES	CHILD CARE REQUESTS ¹⁰	
Full-time and part-time spaces	29%	83%	AGES	FULL-TIME
Only full-time spaces	36%	17%	Under 2 years	100%
Only part-time spaces	35%	0%	2 years	100%
Sites offering evening, weekend, or overnight care	0%	45%	3 years	100%
Infant care	\$1,022	\$960	4 years	0%
Toddler care	\$787	\$852	5 years	0%
Preschool care	\$652	\$791	REQUESTS FOR CARE DURING NONTRADITIONAL HOURS ¹⁰	
MAJOR REASONS FAMILIES SEEK CHILD CARE ^{10,12}			Evening/weekend/overnight care	0%
100%	Employment			

LICENSED CHILD CARE AVAILABILITY ¹³	COUNTY		
	2021	2023	CHANGE
Children age 0-12 with parents in the labor force for whom a licensed child care space is available	24%	28%	4%

LANGUAGE

LANGUAGES SPOKEN BY AT LEAST ONE CENTER STAFF ^{9,12}	LANGUAGE SPOKEN AT HOME ¹⁴	
English 100%, Spanish 80%	English only	80%
LANGUAGES SPOKEN BY FAMILY CHILD CARE PROVIDER ^{9,12}	Spanish	18%
	Asian/Pacific Island Language	1%
	Other	1%
English 98%, Spanish 44%		

9. Resource and Referral (R&R) databases (2021 & 2023). CDSS, Community Care Licensing Division, Open Child Care Facilities List as of August 9, 2023.

10. R&R child care referrals (April – June 2023). CDSS R&R Child Care Service Data Report (April – June 2023).

11. National Database of Childcare Prices, Women's Bureau, U.S. Department of Labor (2019-2022). Figures reflect median full-time monthly estimates based on each state's Market Rate Survey.

12. Percentages may exceed 100% when multiple options are chosen.

13. ACS Microdata and R&R databases (2021 & 2023), calculated by KidsData.

14. ACS 1-Year Language Spoken at Home Estimates (2023).

For more information about child care in TEHAMA:

Child Care Referral & Education
Shasta County Office of Education
530-529-3131
www.shastacoe.org