

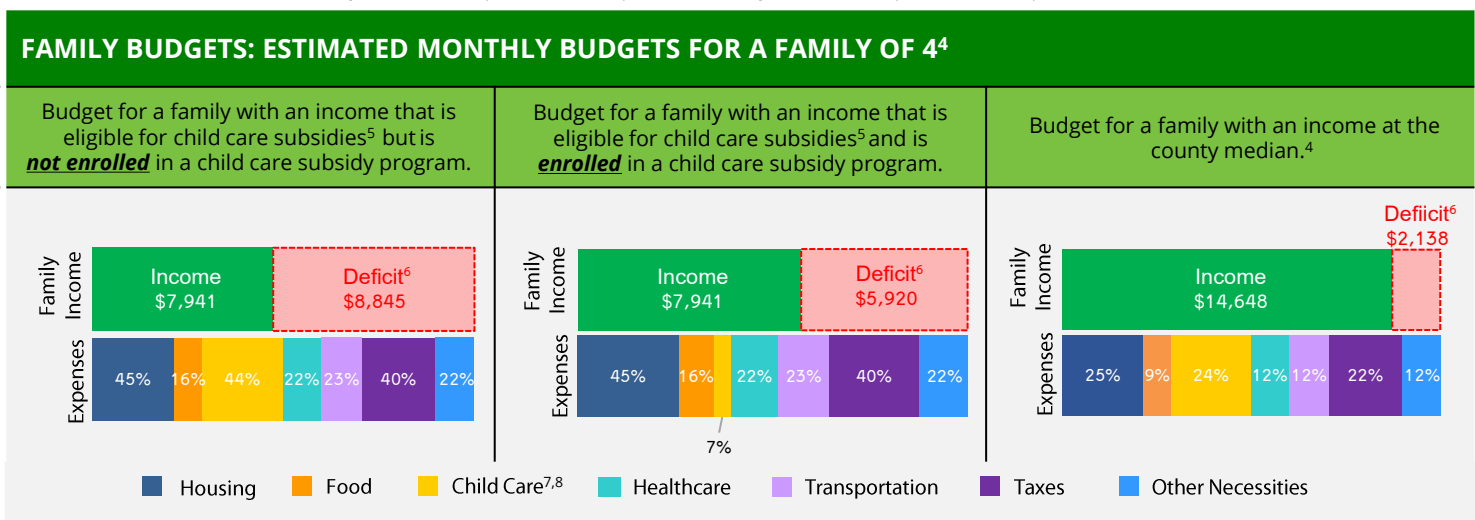
San Mateo County

Family & Child Data

The 2023 California Child Care Portfolio, the 14th edition of this biennial report, offers a comprehensive look at licensed child care supply, demand, and costs across the state and within each county. It also includes data on population, poverty, and family budgets. Local child care Resource and Referral programs (R&Rs) played a key role in collecting these data. R&Rs assist parents in finding child care that meets their family's needs while also supporting child care providers with resources and licensed capacity-building efforts in their communities. To access the full report summary and county data, visit www.rrnetwork.org.

POPULATION ¹	COUNTY			CALIFORNIA		
	2021	2023	CHANGE	2021	2023	CHANGE
Total number of residents	749,908	749,075	-0.1%	39,246,702	39,109,070	-0.4%
Number of children 0-12	109,337	105,808	-3%	6,328,862	6,077,962	-4%
Under 2 years	15,730	14,934	-5%	861,008	830,631	-4%
2 years	8,154	7,367	-10%	460,224	407,630	-11%
3 years	8,118	8,058	-1%	469,378	443,300	-6%
4 years	8,363	7,954	-5%	484,018	455,053	-6%
5 years	8,589	8,000	-7%	493,582	464,560	-6%
6-10 years	43,853	42,786	-2%	2,525,290	2,476,740	-2%
11-12 years	17,530	16,709	-5%	1,035,362	1,000,048	-3%

POVERTY ²	COUNTY			CALIFORNIA			% OF FAMILIES BELOW FEDERAL POVERTY LINE	
	2021	2023	CHANGE	2021	2023	CHANGE	COUNTY	CA
Number of people living below federal poverty line	49,089	52,835	8%	4,733,036	4,588,687	-3%	6%	12%
Number of children 0-5 living below federal poverty line	3,196	2,670	-16%	406,369	361,465	-11%		
Children enrolled in subsidized child care ³	3,380	3,382	0.1%	372,938	389,213	4%		



1. California Department of Finance Population Projections (2021 & 2023).
2. American Community Survey (ACS) 1-Year Poverty Estimates (2021 & 2023).
3. California Department of Social Services (CDSS), CDD 801A Monthly Child Care Report (July 2021); CDSS, CW115 Child Care Monthly Report (July 2021); CDSS, Direct Service Contract Enrollments (October 2023); California Department of Education (CDE), California State Preschool Program Enrollment (October 2021 & 2023).
4. Family expenses and county median income are based on the Economic Policy Institute (EPI) Family Budget Calculator (2024) and the National Database of Childcare Prices, Women's Bureau, U.S. Department of Labor (2019-2022).
5. CDSS income eligibility ceiling for a family of 4 (July 2022 – June 2023).
6. Deficit refers to the additional income required to cover the total cost of all expenses.
7. CDSS Family Fee for a family of 4 at the income eligibility ceiling (July 2022 – June 2023).
8. National Database of Childcare Prices, Women's Bureau, U.S. Department of Labor (2019-2022). Estimates are based on each state's Market Rate Survey. Figures reflect median full-time costs for one infant in a licensed family child care home and one preschooler in a licensed child care center.

LICENSED CHILD CARE SUPPLY AND CHILD CARE REQUESTS

SITES AND SPACES BY AGE AND TYPE ⁹	CHILD CARE CENTERS			FAMILY CHILD CARE HOMES			CHILD CARE REQUESTS ¹⁰	
	2021	2023	CHANGE	2021	2023	CHANGE		
Total number of sites	289	278	-4%	560	531	-5%	Under 2 years	29%
Total number of spaces	18,719	19,774	6%	6,013	5,654	-6%	2-5 years	44%
Under 2 years	1,073	1,213	13%				6 years and older	27%
2-5 years	12,911	12,915	0.03%					
6 years and older	4,735	5,646	19%					

19%

 Licensed child care programs participating in the **Child Care Food Program⁹**
26%

 Licensed child care centers with **one or more federal, state, or local contracts⁹**

LICENSED CHILD CARE SCHEDULES, COSTS, AVAILABILITY, AND CHILD CARE REQUESTS

SCHEDULE ⁹ AND COST ¹¹	CHILD CARE CENTERS	FAMILY CHILD CARE HOMES	CHILD CARE REQUESTS ¹⁰	
Full-time and part-time spaces	62%	67%	AGES	FULL-TIME
Only full-time spaces	20%	30%	Under 2 years	12%
Only part-time spaces	18%	3%	2 years	37%
Sites offering evening, weekend, or overnight care	1%	13%	3 years	6%
Infant care	\$2,403	\$1,625	4 years	32%
Toddler care	\$1,721	\$1,547	5 years	11%
Preschool care	\$1,894	\$1,716	REQUESTS FOR CARE DURING NONTRADITIONAL HOURS ¹⁰	
MAJOR REASONS FAMILIES SEEK CHILD CARE ^{10,12}			Evening/weekend/overnight care	0%
61% Employment	31% Parent seeking employment	6% Parent in school or training		

LICENSED CHILD CARE AVAILABILITY ¹³	COUNTY		
	2021	2023	CHANGE
Children age 0-12 with parents in the labor force for whom a licensed child care space is available	33%	36%	3%

LANGUAGE

LANGUAGES SPOKEN BY AT LEAST ONE CENTER STAFF ^{9,12}	LANGUAGE SPOKEN AT HOME ¹⁴	
English 98%, Spanish 53%, Chinese 21%, Tagalog 12%, Hindi 5%, Arabic 5%	English only	55%
LANGUAGES SPOKEN BY FAMILY CHILD CARE PROVIDER ^{9,12}	Spanish	18%
English 96%, Spanish 51%, Chinese 10%, Tagalog 9%, Portuguese 4%, Farsi 2%	Asian/Pacific Island Language	20%
	Other	8%

9. Resource and Referral (R&R) databases (2021 & 2023). CDSS, Community Care Licensing Division, Open Child Care Facilities List as of August 9, 2023.

10. R&R child care referrals (April – June 2023). CDSS R&R Child Care Service Data Report (April – June 2023).

11. National Database of Childcare Prices, Women's Bureau, U.S. Department of Labor (2019-2022). Figures reflect median full-time monthly estimates based on each state's Market Rate Survey.

12. Percentages may exceed 100% when multiple options are chosen.

13. ACS Microdata and R&R databases (2021 & 2023), calculated by KidsData.

14. ACS 1-Year Language Spoken at Home Estimates (2023).

For more information about child care in **SAN MATEO:**

4Cs of San Mateo County

650-517-1460

www.sanmateo4cs.org