

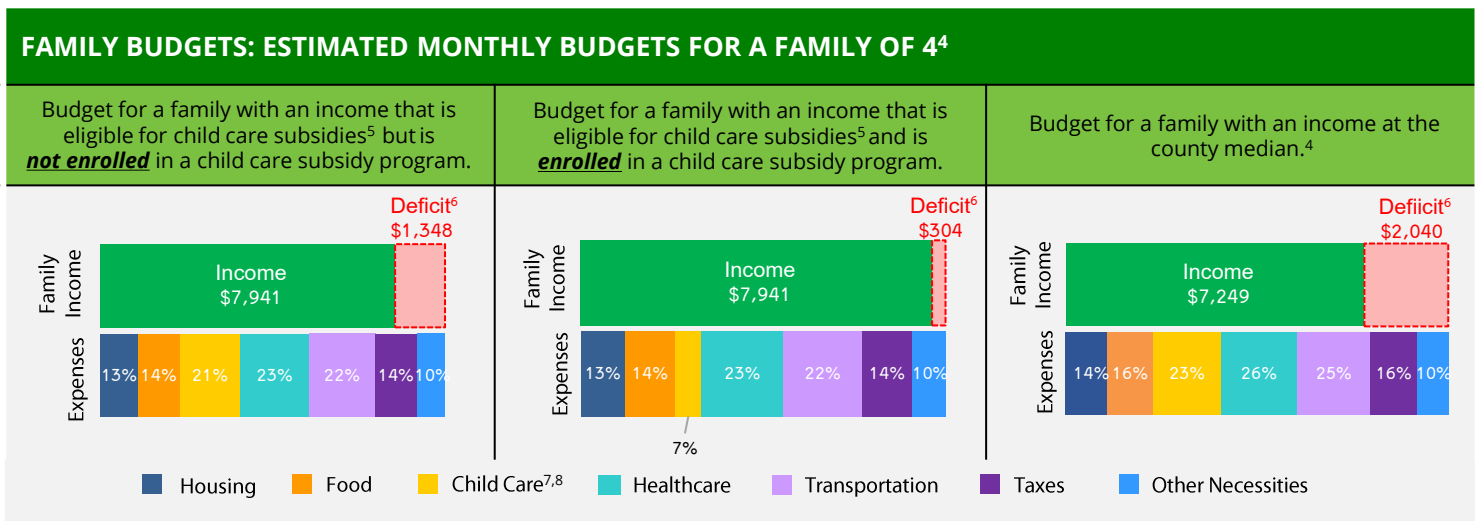
# Plumas County

## Family & Child Data

The 2023 California Child Care Portfolio, the 14th edition of this biennial report, offers a comprehensive look at licensed child care supply, demand, and costs across the state and within each county. It also includes data on population, poverty, and family budgets. Local child care Resource and Referral programs (R&Rs) played a key role in collecting these data. R&Rs assist parents in finding child care that meets their family's needs while also supporting child care providers with resources and licensed capacity-building efforts in their communities. To access the full report summary and county data, visit [www.rrnetwork.org](http://www.rrnetwork.org).

POPULATION <sup>1</sup>	COUNTY			CALIFORNIA		
	2021	2023	CHANGE	2021	2023	CHANGE
Total number of residents	19,733	18,955	-3.9%	39,246,702	39,109,070	-0.4%
Number of children 0-12	2,623	2,366	-10%	6,328,862	6,077,962	-4%
Under 2 years	316	250	-21%	861,008	830,631	-4%
2 years	189	141	-25%	460,224	407,630	-11%
3 years	210	156	-26%	469,378	443,300	-6%
4 years	265	175	-34%	484,018	455,053	-6%
5 years	217	195	-10%	493,582	464,560	-6%
6-10 years	1,006	1,075	7%	2,525,290	2,476,740	-2%
11-12 years	420	374	-11%	1,035,362	1,000,048	-3%

POVERTY <sup>2</sup>	COUNTY			CALIFORNIA			% OF FAMILIES BELOW FEDERAL POVERTY LINE	
	2021	2023	CHANGE	2021	2023	CHANGE	COUNTY	CA
Number of people living below federal poverty line	2,310	2,101	-9%	4,733,036	4,588,687	-3%		
Number of children 0-5 living below federal poverty line	174	261	50%	406,369	361,465	-11%		
Children enrolled in subsidized child care <sup>3</sup>	284	208	-27%	372,938	389,213	4%		
							15%	12%



1. California Department of Finance Population Projections (2021 & 2023).  
2. American Community Survey (ACS) 1-Year Poverty Estimates (2021 & 2023).  
3. California Department of Social Services (CDSS), CDD 801A Monthly Child Care Report (July 2021); CDSS, CW115 Child Care Monthly Report (July 2021); CDSS, Direct Service Contract Enrollments (October 2023); California Department of Education (CDE), California State Preschool Program Enrollment (October 2021 & 2023).  
4. Family expenses and county median income are based on the Economic Policy Institute (EPI) Family Budget Calculator (2024) and the National Database of Childcare Prices, Women's Bureau, U.S. Department of Labor (2019-2022).  
5. CDSS income eligibility ceiling for a family of 4 (July 2022 – June 2023).  
6. Deficit refers to the additional income required to cover the total cost of all expenses.  
7. CDSS Family Fee for a family of 4 at the income eligibility ceiling (July 2022 – June 2023).  
8. National Database of Childcare Prices, Women's Bureau, U.S. Department of Labor (2019-2022). Estimates are based on each state's Market Rate Survey. Figures reflect median full-time costs for one infant in a licensed family child care home and one preschooler in a licensed child care center.

### LICENSED CHILD CARE SUPPLY AND CHILD CARE REQUESTS

SITES AND SPACES BY AGE AND TYPE <sup>9</sup>	CHILD CARE CENTERS			FAMILY CHILD CARE HOMES			CHILD CARE REQUESTS <sup>10</sup>	
	2021	2023	CHANGE	2021	2023	CHANGE		
Total number of sites	2	8	300%	24	23	-4%	Under 2 years	44%
Total number of spaces	100	214	114%	252	238	-6%	2-5 years	56%
Under 2 years	18	5	-72%				6 years and older	0%
2-5 years	54	209	287%					
6 years and older	28	0	-100%					

**23%**

 Licensed child care programs participating in the **Child Care Food Program<sup>9</sup>**
**50%**

 Licensed child care centers with **one or more federal, state, or local contracts<sup>9</sup>**

### LICENSED CHILD CARE SCHEDULES, COSTS, AVAILABILITY, AND CHILD CARE REQUESTS

SCHEDULE <sup>9</sup> AND COST <sup>11</sup>	CHILD CARE CENTERS	FAMILY CHILD CARE HOMES	CHILD CARE REQUESTS <sup>10</sup>	
Full-time and part-time spaces	100%	100%	AGES	FULL-TIME
Only full-time spaces	0%	0%	Under 2 years	50%
Only part-time spaces	0%	0%	2 years	50%
Sites offering evening, weekend, or overnight care	0%	4%	3 years	0%
Infant care	\$973	\$997	4 years	0%
Toddler care	\$775	\$910	5 years	0%
Preschool care	\$642	\$845		

#### MAJOR REASONS FAMILIES SEEK CHILD CARE<sup>10,12</sup>

**100%**

Employment

**100%**

Parent seeking employment

**100%**

Parent in school or training

#### REQUESTS FOR CARE DURING NONTRADITIONAL HOURS<sup>10</sup>

Evening/weekend/overnight care

0%

LICENSED CHILD CARE AVAILABILITY <sup>13</sup>	COUNTY		
	2021	2023	CHANGE
Children age 0-12 with parents in the labor force for whom a licensed child care space is available	31%	24%	-7%

### LANGUAGE

LANGUAGES SPOKEN BY AT LEAST ONE CENTER STAFF <sup>9,12</sup>	LANGUAGES SPOKEN AT HOME <sup>14</sup>
English 100%	English only 93%
	Spanish 5%
LANGUAGES SPOKEN BY FAMILY CHILD CARE PROVIDER <sup>9,12</sup>	Asian/Pacific Island Language 1%
English 100%, Spanish 9%	Other 2%

9. Resource and Referral (R&R) databases (2021 & 2023). CDSS, Community Care Licensing Division, Open Child Care Facilities List as of August 9, 2023.

10. R&R child care referrals (April – June 2023). CDSS R&R Child Care Service Data Report (April – June 2023).

11. National Database of Childcare Prices, Women's Bureau, U.S. Department of Labor (2019-2022). Figures reflect median full-time monthly estimates based on each state's Market Rate Survey.

12. Percentages may exceed 100% when multiple options are chosen.

13. ACS Microdata and R&R databases (2021 & 2023), calculated by KidsData.

14. ACS 1-Year Language Spoken at Home Estimates (2023).

 For more information about child care in **PLUMAS**:

**Plumas Rural Services**
**530-283-4453**
[www.plumasruralservices.org](http://www.plumasruralservices.org)