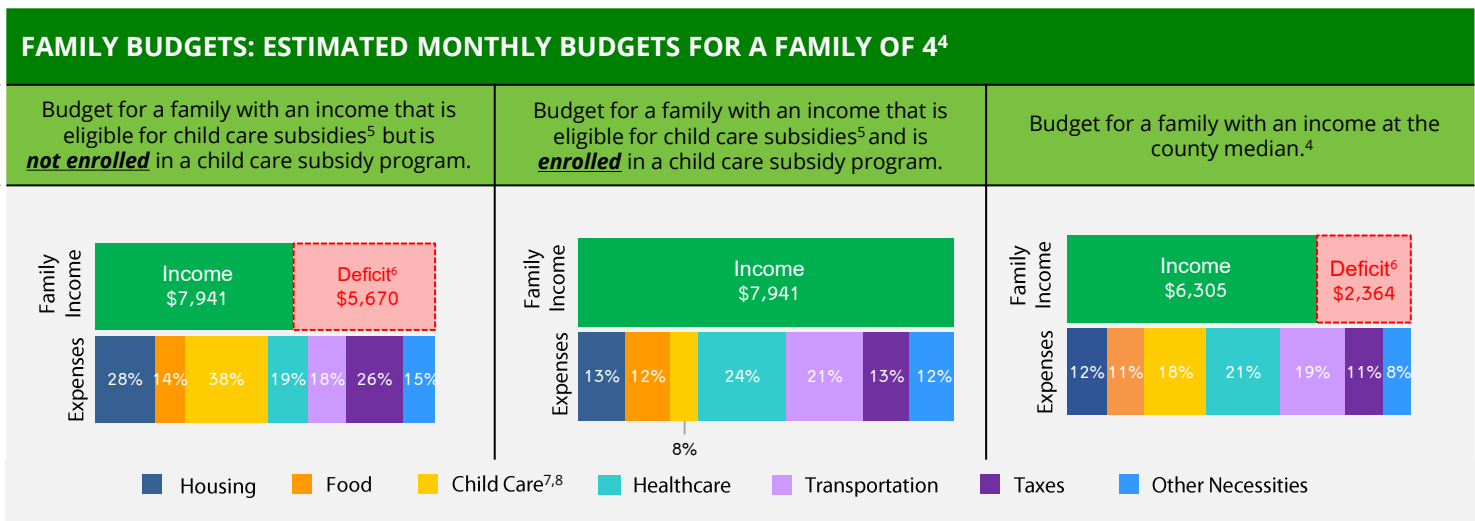


The 2023 California Child Care Portfolio, the 14th edition of this biennial report, offers a comprehensive look at licensed child care supply, demand, and costs across the state and within each county. It also includes data on population, poverty, and family budgets. Local child care Resource and Referral programs (R&Rs) played a key role in collecting these data. R&Rs assist parents in finding child care that meets their family's needs while also supporting child care providers with resources and licensed capacity-building efforts in their communities. To access the full report summary and county data, visit www.rrnetwork.org.

POPULATION ¹	COUNTY			CALIFORNIA		
	2021	2023	CHANGE	2021	2023	CHANGE
Total number of residents	28,709	28,039	-2%	39,246,702	39,109,070	-0.4%
Number of children 0-12	5,589	5,171	-7%	6,328,862	6,077,962	-4%
Under 2 years	768	688	-10%	861,008	830,631	-4%
2 years	397	363	-9%	460,224	407,630	-11%
3 years	364	378	4%	469,378	443,300	-6%
4 years	399	383	-4%	484,018	455,053	-6%
5 years	430	353	-18%	493,582	464,560	-6%
6-10 years	2,271	2,124	-6%	2,525,290	2,476,740	-2%
11-12 years	960	882	-8%	1,035,362	1,000,048	-3%

POVERTY ²	COUNTY			CALIFORNIA			% OF FAMILIES BELOW FEDERAL POVERTY LINE	
	2021	2023	CHANGE	2021	2023	CHANGE	COUNTY	CA
Number of people living below federal poverty line	4,201	4,335	3%	4,733,036	4,588,687	-3%	18%	12%
Number of children 0-5 living below federal poverty line	353	750	112%	406,369	361,465	-11%		
Children enrolled in subsidized child care ³	656	618	-6%	372,938	389,213	4%		



1. California Department of Finance Population Projections (2021 & 2023).
2. American Community Survey (ACS) 1-Year Poverty Estimates (2021 & 2023).
3. California Department of Social Services (CDSS), CDD 801A Monthly Child Care Report (July 2021); CDSS, CW115 Child Care Monthly Report (July 2021); CDSS, Direct Service Contract Enrollments (October 2023); California Department of Education (CDE), California State Preschool Program Enrollment (October 2021 & 2023).
4. Family expenses and county median income are based on the Economic Policy Institute (EPI) Family Budget Calculator (2024) and the National Database of Childcare Prices, Women's Bureau, U.S. Department of Labor (2019-2022).
5. CDSS income eligibility ceiling for a family of 4 (July 2022 - June 2023).
6. Deficit refers to the additional income required to cover the total cost of all expenses.
7. CDSS Family Fee for a family of 4 at the income eligibility ceiling (July 2022 - June 2023).
8. National Database of Childcare Prices, Women's Bureau, U.S. Department of Labor (2019-2022). Estimates are based on each state's Market Rate Survey. Figures reflect median full-time costs for one infant in a licensed family child care home and one preschooler in a licensed child care center.

LICENSED CHILD CARE SUPPLY AND CHILD CARE REQUESTS

SITES AND SPACES BY AGE AND TYPE ⁹	CHILD CARE CENTERS			FAMILY CHILD CARE HOMES			CHILD CARE REQUESTS ¹⁰	
	2021	2023	CHANGE	2021	2023	CHANGE		
Total number of sites	12	13	8%	45	57	27%	Under 2 years	36%
Total number of spaces	253	312	23%	486	672	38%	2-5 years	32%
Under 2 years	15	15	0%				6 years and older	32%
2-5 years	238	282	18%					
6 years and older	0	15	N/A					

73%

 Licensed child care programs participating in the **Child Care Food Program⁹**
85%

 Licensed child care centers with **one or more federal, state, or local contracts⁹**

LICENSED CHILD CARE SCHEDULES, COSTS, AVAILABILITY, AND CHILD CARE REQUESTS

SCHEDULE ⁹ AND COST ¹¹	CHILD CARE CENTERS	FAMILY CHILD CARE HOMES	CHILD CARE REQUESTS ¹⁰	
Full-time and part-time spaces	60%	70%	AGES	FULL-TIME
Only full-time spaces	0%	27%	Under 2 years	100%
Only part-time spaces	40%	2%	2 years	100%
Sites offering evening, weekend, or overnight care	0%	30%	3 years	100%
Infant care	\$1,032	\$913	4 years	100%
Toddler care	\$788	\$835	5 years	83%
Preschool care	\$653	\$776		

MAJOR REASONS FAMILIES SEEK CHILD CARE^{10,12}

68%

Employment

32%

Parent seeking employment

3%

Parent in school or training

REQUESTS FOR CARE DURING NONTRADITIONAL HOURS¹⁰

Evening/weekend/overnight care

0%

LICENSED CHILD CARE AVAILABILITY¹³

COUNTY

	2021	2023	CHANGE
Children age 0-12 with parents in the labor force for whom a licensed child care space is available	24%	28%	4%

LANGUAGE

LANGUAGES SPOKEN BY AT LEAST ONE CENTER STAFF^{9,12}

English 92%, Spanish 69%

LANGUAGES SPOKEN BY FAMILY CHILD CARE PROVIDER^{9,12}

English 77%, Spanish 49%

LANGUAGE SPOKEN AT HOME¹⁴

English only 63%

Spanish 33%

Asian/Pacific Island Language 2%

Other 2%

9. Resource and Referral (R&R) databases (2021 & 2023). CDSS, Community Care Licensing Division, Open Child Care Facilities List as of August 9, 2023.

10. R&R child care referrals (April – June 2023). CDSS R&R Child Care Service Data Report (April – June 2023).

11. National Database of Childcare Prices, Women's Bureau, U.S. Department of Labor (2019-2022). Figures reflect median full-time monthly estimates based on each state's Market Rate Survey.

12. Percentages may exceed 100% when multiple options are chosen.

13. ACS Microdata and R&R databases (2021 & 2023), calculated by KidsData.

14. ACS 1-Year Language Spoken at Home Estimates (2023).

For more information about child care in GLENN:

 Glenn County Office of Education
 Department of Child and Family Services

530-865-1118

www.glenncoe.org