

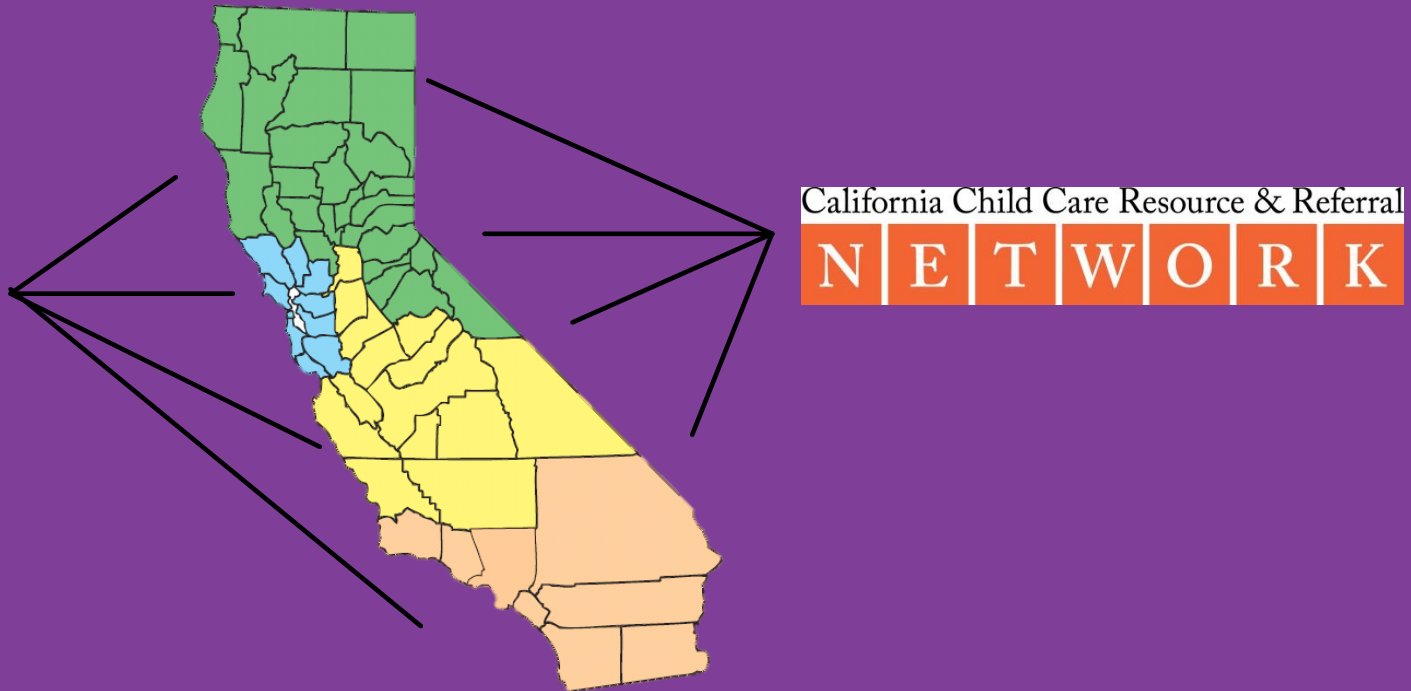
## *2021 California Child Care Portfolio*

California Child Care Resource & Referral

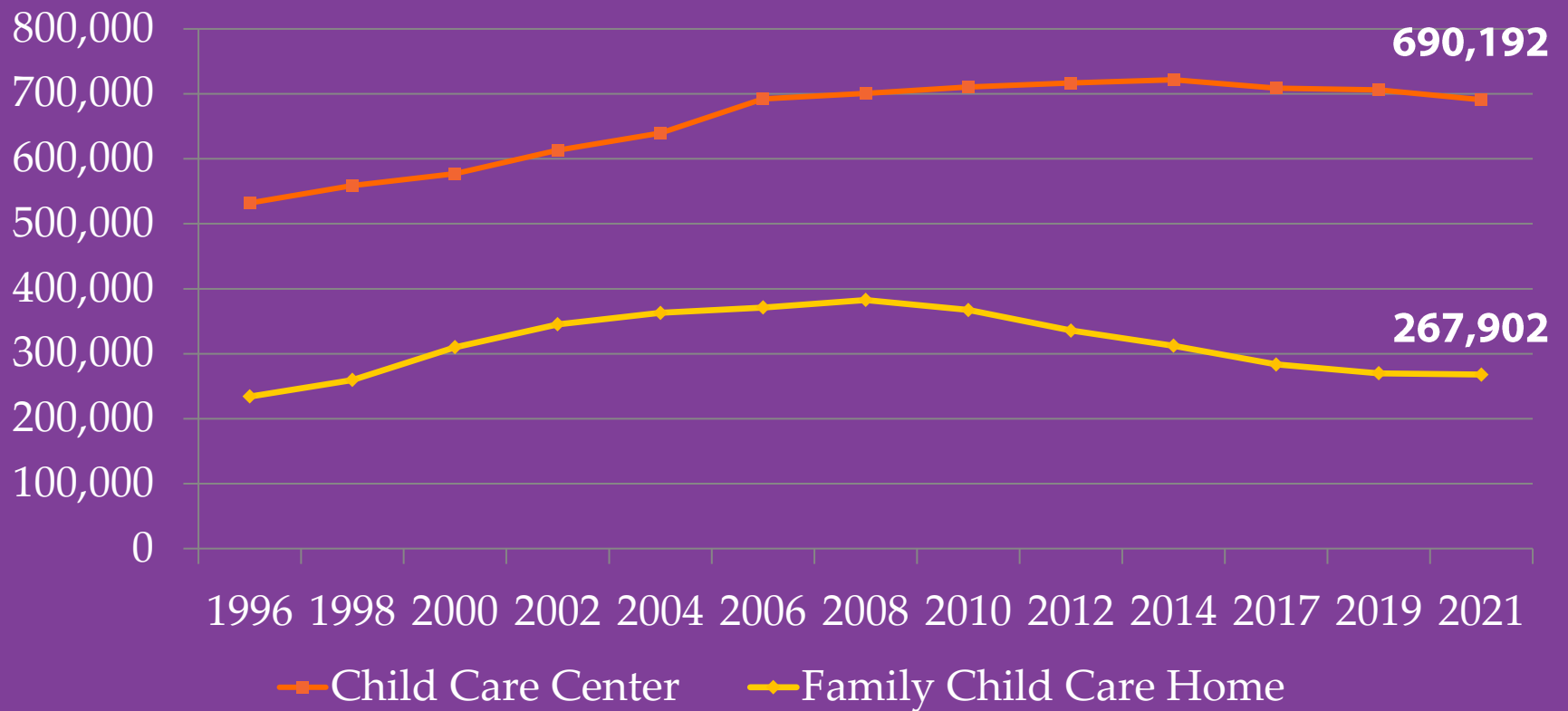
**N E T W O R K**



# Child Care Resource & Referral



# Licensed Child Care Spaces



# Change in Licensed Center Supply 2019-2021



Center facilities: -1%

Center spaces: -2%

    Infant capacity: 1%

    Preschool capacity: -2%

    Schoolage capacity: -4%

# Change in Family Child Care Home Supply 2019-21

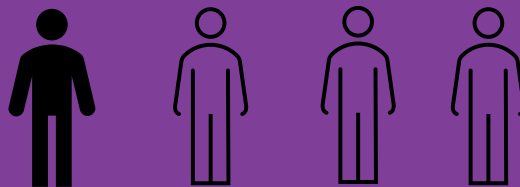


Family child care homes: -4%

Family child care home capacity: -1%

# Availability of care for children with working parents

25%



Data source: KidsData

# Regional Supply Change 2019-2021

**Statewide: -2%**

**Centers: -2%**

**Homes: -1%**

**North: -5%**

**Centers: -7%**

**Homes: -1%**

**Bay Area: 0.3%**

**Centers: 1%**

**Homes: -1%**

**Central: -1%**

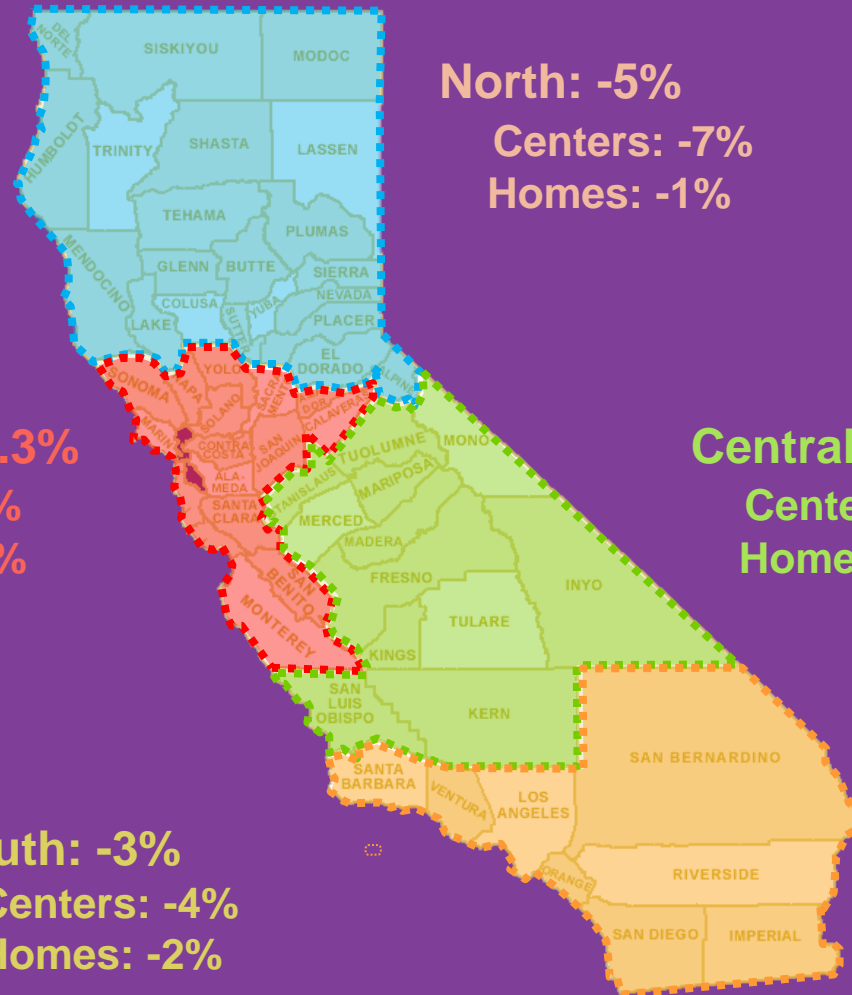
**Centers: -2%**

**Homes: 1%**

**South: -3%**

**Centers: -4%**

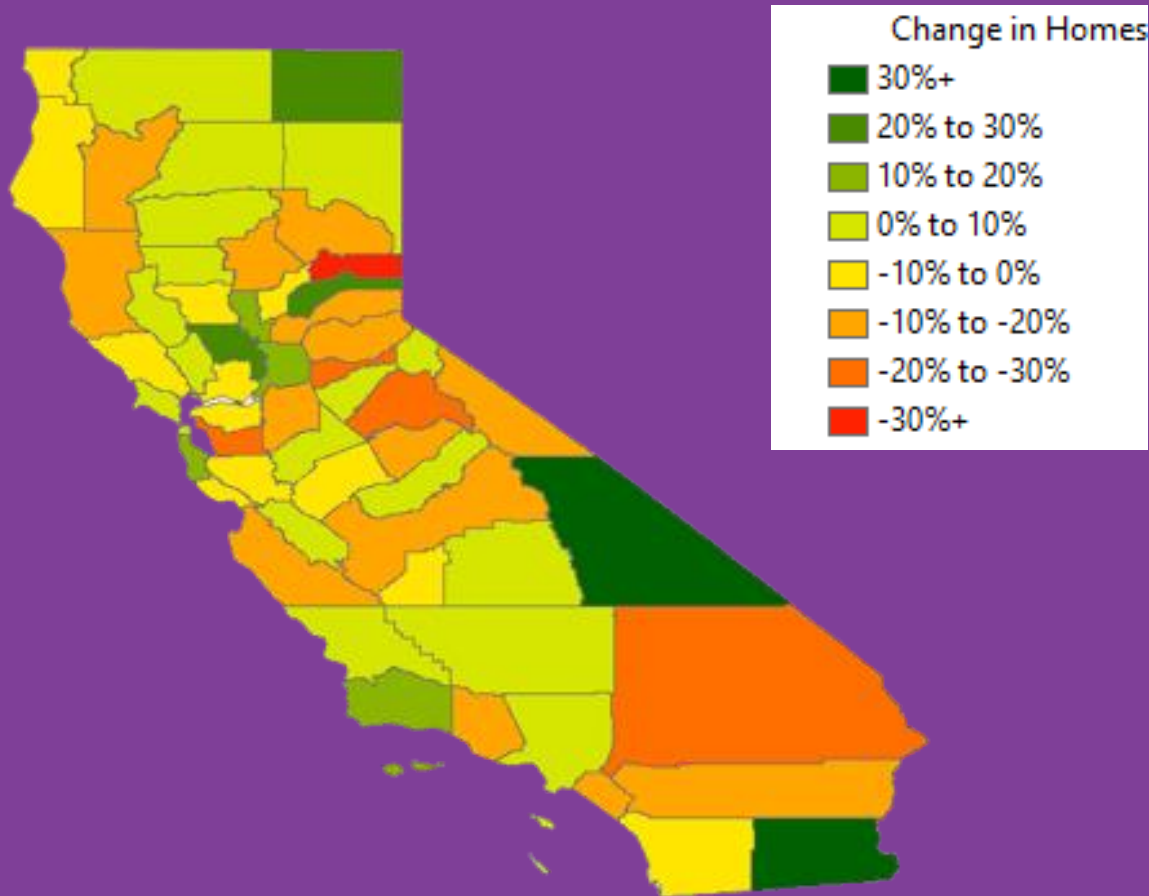
**Homes: -2%**



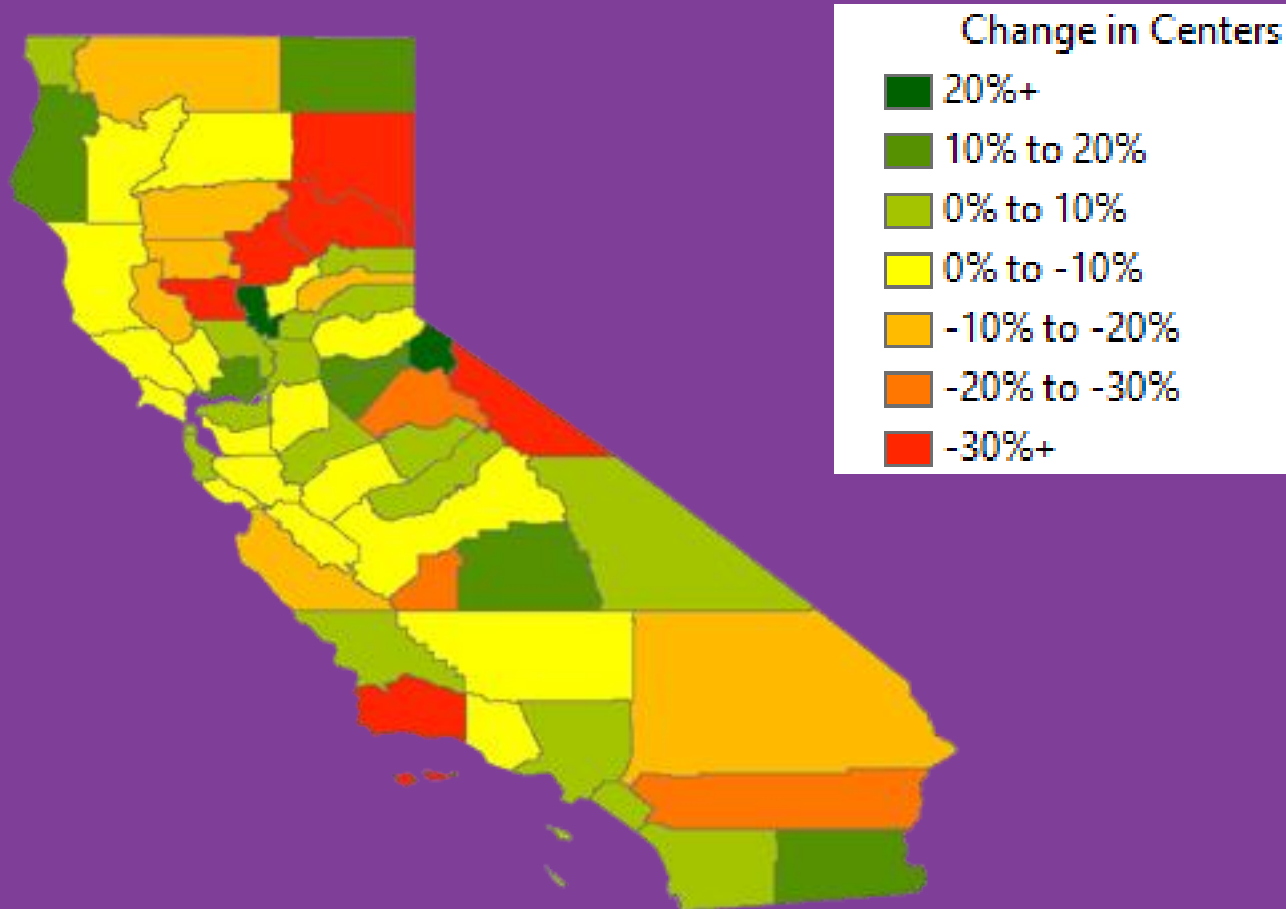




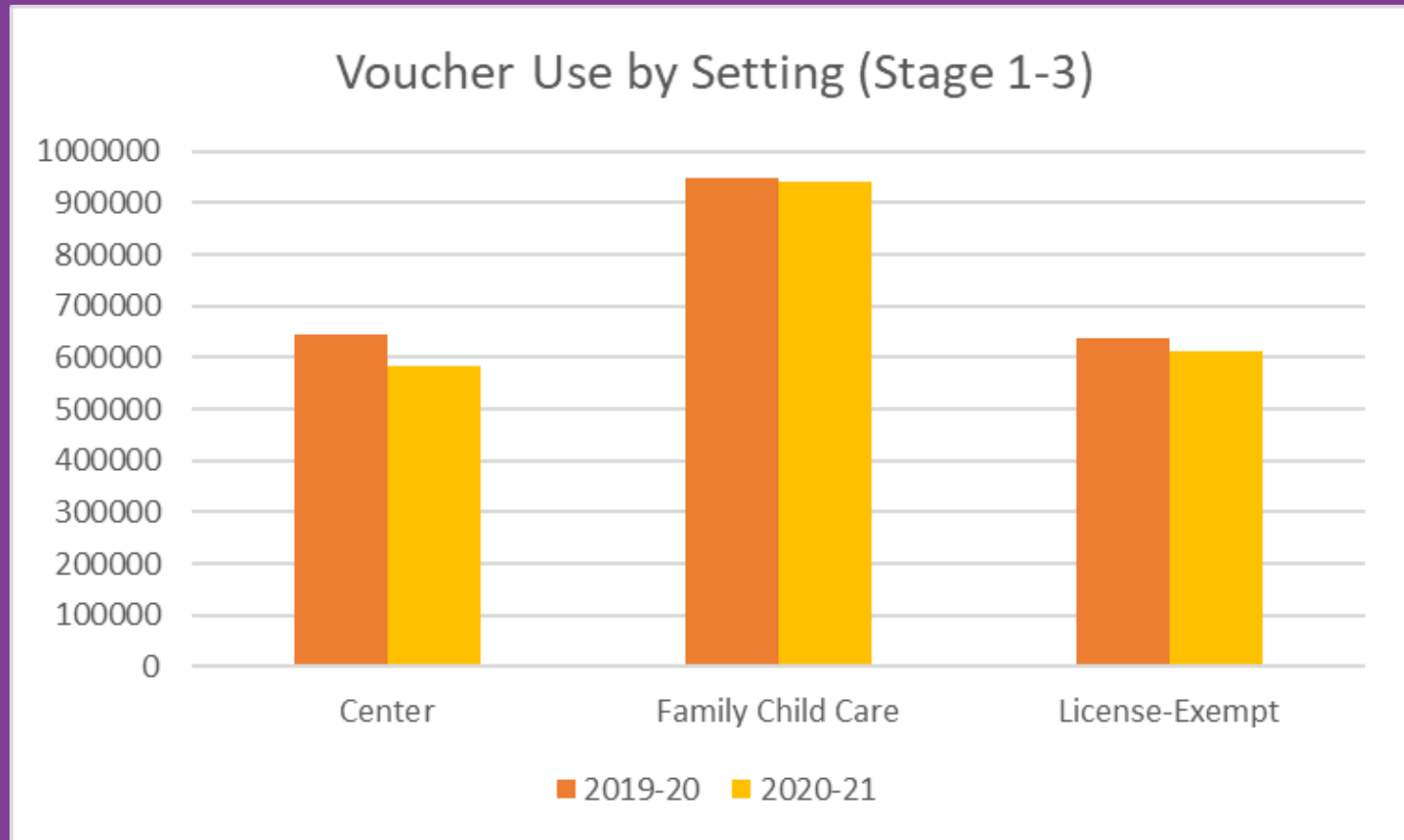
# Percent change in family child care homes 2019-2021



# Percent change in center spaces 2019-2021

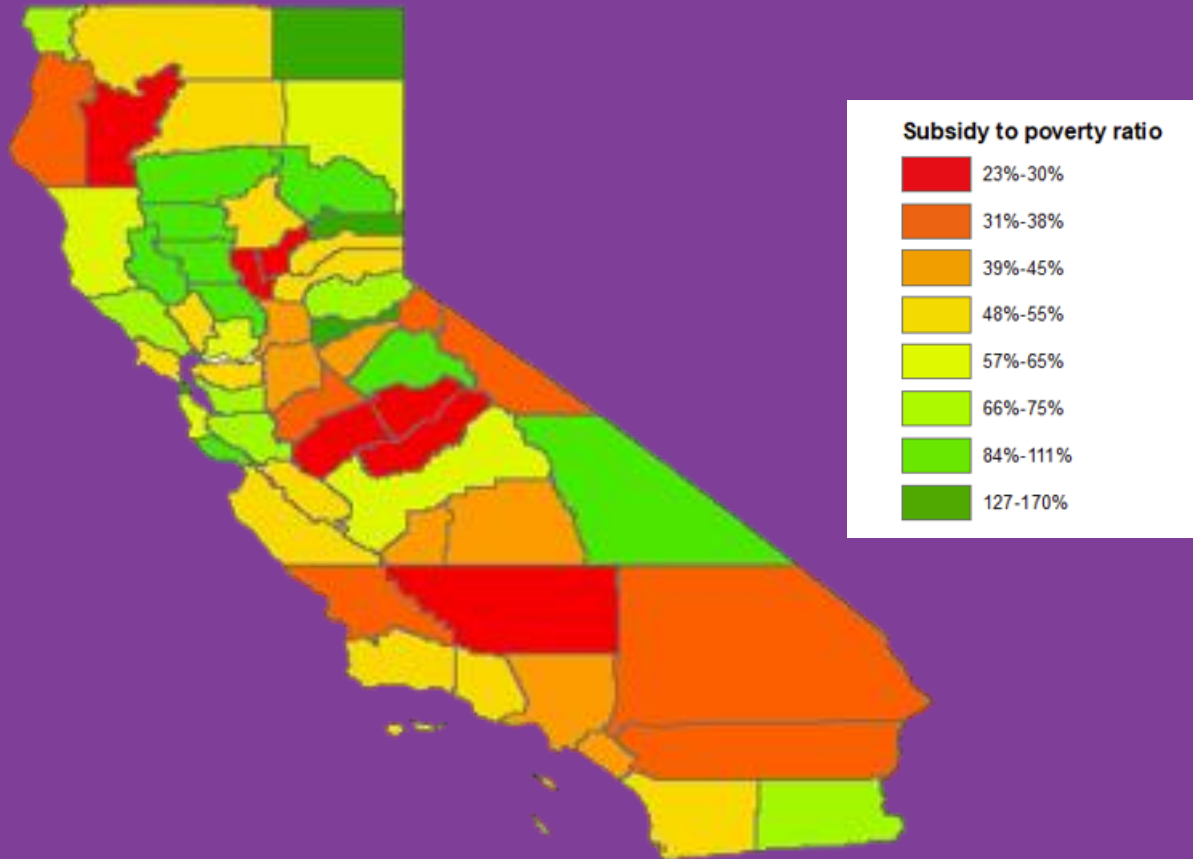


# Voucher Use by Setting



Data source: California Department of Social Services

# Child care subsidies for children 0-12 in poverty



Data source: CA Dept of Social Services, CA Dept of Education, American Community Survey

# Policy Implications



The public support for child care providers during the pandemic likely worked!


- \$176.8 stipends to all licensed child care providers
- \$405.5 stipends for child care providers that cared for children with a subsidy
- Providers accepting subsidy paid based on enrollment
- Family fees waived
- Cleaning supplies/stipends
- Food/diapers
- PPE/home testing kits

# Policy Recommendations



- Increase pay for all child care workers
- Eliminate family fees to the extent of the law
- Codify paying subsidy providers based on enrollment

# Summary

- 
- Despite a decrease in supply, public support for child care likely staved off a greater decline of child care during the pandemic
  - Centers seem to be impacted more than usual, likely due to restrictions on group size
  - There are substantial regional and county variation in the change of supply
  - Continued public investment in child care is necessary to fortify California's child care system

# Thank you!



Visit the data tool on the Network's website for more information!