

# Alameda County

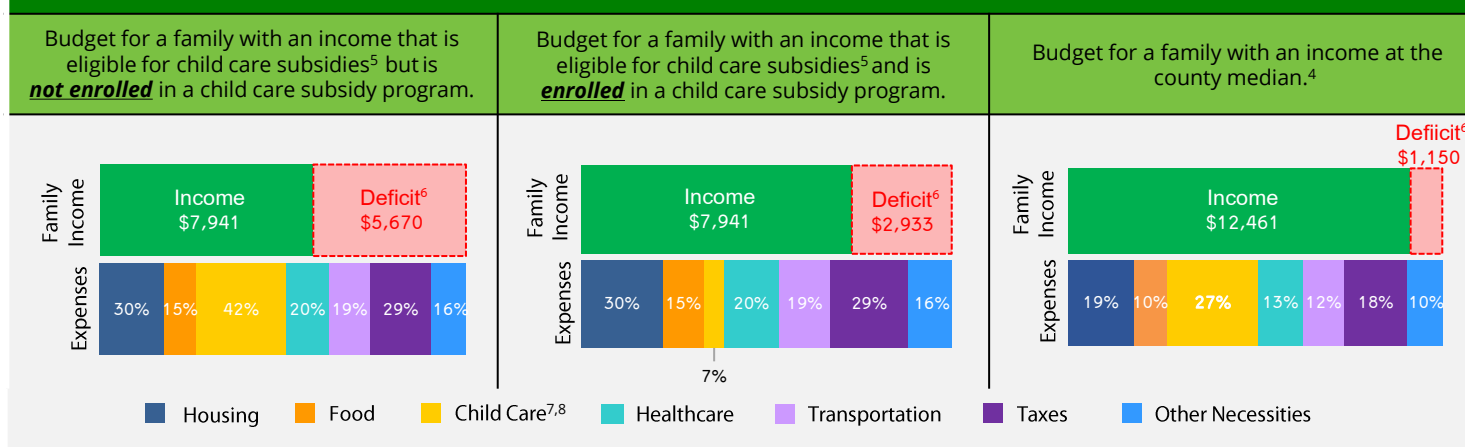
## Family & Child Data

The 2023 California Child Care Portfolio, the 14th edition of this biennial report, offers a comprehensive look at licensed child care supply, demand, and costs across the state and within each county. It also includes data on population, poverty, and family budgets. Local child care Resource and Referral programs (R&Rs) played a key role in collecting these data. R&Rs assist parents in finding child care that meets their family's needs while also supporting child care providers with resources and licensed capacity-building efforts in their communities. To access the full report summary and county data, visit [www.rrnetwork.org](http://www.rrnetwork.org).

POPULATION <sup>1</sup>	COUNTY			CALIFORNIA		
	2021	2023	CHANGE	2021	2023	CHANGE
Total number of residents	1,657,465	1,656,037	-0.1%	39,246,702	39,109,070	-0.4%
Number of children 0-12	246,312	238,591	-3%	6,328,862	6,077,962	-4%
Under 2 years	35,200	33,418	-5%	861,008	830,631	-4%
2 years	18,478	16,535	-11%	460,224	407,630	-11%
3 years	18,608	18,134	-3%	469,378	443,300	-6%
4 years	18,976	18,167	-4%	484,018	455,053	-6%
5 years	19,329	18,322	-5%	493,582	464,560	-6%
6-10 years	96,747	96,838	0.1%	2,525,290	2,476,740	-2%
11-12 years	38,974	37,177	-5%	1,035,362	1,000,048	-3%

POVERTY <sup>2</sup>	COUNTY			CALIFORNIA			% OF FAMILIES BELOW FEDERAL POVERTY LINE	
	2021	2023	CHANGE	2021	2023	CHANGE	COUNTY	CA
Number of people living below federal poverty line	151,379	150,527	-1%	4,733,036	4,588,687	-3%	7%	12%
Number of children 0-5 living below federal poverty line	7,419	5,977	-19%	406,369	361,465	-11%		
Children enrolled in subsidized child care <sup>3</sup>	12,422	12,596	-1%	372,938	389,213	4%		

### FAMILY BUDGETS: ESTIMATED MONTHLY BUDGETS FOR A FAMILY OF 4<sup>4</sup>



1. California Department of Finance Population Projections (2021 & 2023).

2. American Community Survey (ACS) 1-Year Poverty Estimates (2021 & 2023).

3. California Department of Social Services (CDSS), CDD 801A Monthly Child Care Report (July 2021); CDSS, CW115 Child Care Monthly Report (July 2021); CDSS, Direct Service Contract Enrollments (October 2023); California Department of Education (CDE), California State Preschool Program Enrollment (October 2021 & 2023).

4. Family expenses and county median income are based on the Economic Policy Institute (EPI) Family Budget Calculator (2024) and the National Database of Childcare Prices, Women's Bureau, U.S. Department of Labor (2019-2022).

5. CDSS income eligibility ceiling for a family of 4 (July 2022 - June 2023).

6. Deficit refers to the additional income required to cover the total cost of all expenses.

7. CDSS Family Fee for a family of 4 at the income eligibility ceiling (July 2022 - June 2023).

8. National Database of Childcare Prices, Women's Bureau, U.S. Department of Labor (2019-2022). Estimates are based on each state's Market Rate Survey. Figures reflect median full-time costs for one infant in a licensed family child care home and one preschooler in a licensed child care center.

### LICENSED CHILD CARE SUPPLY AND CHILD CARE REQUESTS

SITES AND SPACES BY AGE AND TYPE <sup>9</sup>	CHILD CARE CENTERS			FAMILY CHILD CARE HOMES			CHILD CARE REQUESTS <sup>10</sup>	
	2021	2023	CHANGE	2021	2023	CHANGE		
Total number of sites	535	560	5%	1,011	1,242	23%	Under 2 years	35%
Total number of spaces	36,567	39,282	7%	10,835	13,256	22%	2-5 years	47%
Under 2 years	2,576	3,019	17%				6 years and older	18%
2-5 years	24,878	28,292	14%					
6 years and older	9,113	7,971	-13%					

20%

Licensed child care programs participating in the **Child Care Food Program**<sup>9</sup>

23%

Licensed child care centers with **one or more federal, state, or local contracts**<sup>9</sup>

### LICENSED CHILD CARE SCHEDULES, COSTS, AVAILABILITY, AND CHILD CARE REQUESTS

SCHEDULE <sup>9</sup> AND COST <sup>11</sup>	CHILD CARE CENTERS	FAMILY CHILD CARE HOMES	CHILD CARE REQUESTS <sup>10</sup>	
Full-time and part-time spaces	72%	80%	AGES	FULL-TIME
Only full-time spaces	15%	18%	Under 2 years	91%
Only part-time spaces	12%	1%	2 years	98%
Sites offering evening, weekend, or overnight care	2%	25%	3 years	94%
Infant care	\$2,236	\$1,563	4 years	96%
Toddler care	\$1,608	\$1,349	5 years	78%
Preschool care	\$1,769	\$1,497	REQUESTS FOR CARE DURING NONTRADITIONAL HOURS <sup>10</sup>	

#### MAJOR REASONS FAMILIES SEEK CHILD CARE<sup>10,12</sup>

78%

Employment

20%

Parent seeking employment

8%

Parent in school or training

Evening/weekend/overnight care

7%

#### LICENSED CHILD CARE AVAILABILITY<sup>13</sup>

#### COUNTY

	2021	2023	CHANGE
Children age 0-12 with parents in the labor force for whom a licensed child care space is available	29%	34%	5%

### LANGUAGE

#### LANGUAGES SPOKEN BY AT LEAST ONE CENTER STAFF<sup>9,12</sup>

English 87%, Spanish 53%, Chinese 21%, Hindi 11%, Tagalog 8%, Farsi 8%

#### LANGUAGES SPOKEN BY FAMILY CHILD CARE PROVIDER<sup>9,12</sup>

English 87%, Spanish 24%, Chinese 12%, Tagalog 3%, Urdu 2%, Farsi 2%

#### LANGUAGE SPOKEN AT HOME<sup>14</sup>

English only 52%

Spanish 17%

Asian/Pacific Island Language 20%

Other 11%

9. Resource and Referral (R&R) databases (2021 & 2023). CDSS, Community Care Licensing Division, Open Child Care Facilities List as of August 9, 2023.

10. R&R child care referrals (April – June 2023). CDSS R&R Child Care Service Data Report (April – June 2023).

11. National Database of Childcare Prices, Women's Bureau, U.S. Department of Labor (2019-2022). Figures reflect median full-time monthly estimates based on each state's Market Rate Survey.

12. Percentages may exceed 100% when multiple options are chosen.

13. ACS Microdata and R&R databases (2021 & 2023), calculated by KidsData.

14. ACS 1-Year Language Spoken at Home Estimates (2023).

For more information about child care in **ALAMEDA:**

**BANANAS, Inc.** | 510-658-0381 | [www.bananasbunch.org](http://www.bananasbunch.org)

**4Cs of Alameda County** | 510-582-2182 | [www.4c-alameda.org](http://www.4c-alameda.org)

**Hively** | 925-417-8733 | [www.behively.org](http://www.behively.org)