



Congressional District Maps 2023 Licensed Child Care Supply

Understanding the Data

How does subsidized child care work in California?

In California, there are two subsidized child care types: voucher-based child care and direct contracts.

- **Voucher-based Child Care:** Parents receive a child care voucher that allows them to choose the type of care that best fits their needs. They can use the voucher at a licensed child care center, a licensed family child care home, or with a license-exempt provider.
- **Direct Contracts:** The state directly funds child care providers for a set number of slots. Families can receive care at these contracted sites.

For more information on subsidized child care programs in California, please visit the [California Department of Social Services](https://www.cdss.ca.gov/Programs/OPPS/DCFS/Pages/Child-Care/Child-Care-Programs.aspx) website.

What subsidized child care programs are included in the district maps?

Subsidized child care programs shown on the maps include licensed child care centers with direct contracts from federal, state, or local agencies. These contracts include:

- California Department of Education (CDE) contracts, including California State Preschool Programs (CSPP)
- Head Start
- Other direct federal, state or local contracts

Therefore, there may be sites in the unsubsidized child care center category that accept vouchers from families, but do not have a direct subsidy contract.

Are all subsidized child care centers with a direct subsidy contract included in the district maps?

The subsidized child care centers shown in these maps are those that have identified themselves to their local Child Care Resource and Referral (CCR&R) agency as having a direct service contract. If a center did not report this information to their CCR&R, it was not included as a subsidized program.

Additionally, while some license-exempt programs may hold direct subsidy contracts, they are not shown in these maps because only data on licensed child care providers were collected.


As a result, there may be additional subsidized child care programs that are not reflected in this report but still play a vital role in California's subsidized child care system.


Why are family child care homes not separated by subsidy type?


Family child care homes are more difficult to track and typically do not hold direct subsidy contracts. For this reason, we have chosen not to separate them by subsidy status on the maps.

Data Definitions




Total number of Child Care Facilities include all licensed child care sites in a district, and encompass non-subsidized child care centers, subsidized child care centers, and family child care home sites.

 **Non-Subsidized Child Care Centers** are represented by an orange circle and are licensed child care centers that have not indicated with their local Child Care Resource and Referral (CCR&R) agency that they have a direct subsidy contract. These sites, however, may still accept vouchers.

 **Subsidized Child Care Centers** are represented by a green circle and are licensed child care centers that have reported to their local CCR&R that they have a direct federal, state, or local child care contract.

 **Family Child Care Homes** are represented by a purple diamond, and are licensed family child care home sites, without regard to subsidy type.

Total Number of Child Care Facilities:

-  Non-Subsidized Child Care Centers: #
-  Subsidized Child Care Centers: #
-  Family Child Care Homes: #

Map Directory

Who are my Congressional representatives?

Please visit the [United States House of Representatives website](https://www.house.gov/) to find your Congressional Representatives.

Find your district map by clicking one of the links below.

Congressional District 1

Congressional District 2

Congressional District 3

Congressional District 4

Congressional District 5

Congressional District 6

Congressional District 7

Congressional District 8

Congressional District 9

Congressional District 10

Congressional District 11

Congressional District 12

Congressional District 13

Congressional District 14

Congressional District 15

Congressional District 16

Congressional District 17

Congressional District 18

Congressional District 19

Congressional District 20

Congressional District 21

Congressional District 22

Congressional District 23

Congressional District 24

Congressional District 25

Congressional District 26

Congressional District 27

Congressional District 28

Congressional District 29

Congressional District 30

Congressional District 31

Congressional District 32

Congressional District 33

Congressional District 34

Congressional District 35

Congressional District 36

Congressional District 37

Congressional District 38

Congressional District 39

Congressional District 40

Congressional District 41

Congressional District 42

Congressional District 43

Congressional District 44

Congressional District 45

Congressional District 46

Congressional District 47

Congressional District 48

Congressional District 49

Congressional District 50

Congressional District 51

Congressional District 52

Statewide Licensed Child Care Facility Totals

○ **Total Non-Subsidized Child Care Centers: 7,692**

● **Total Subsidized Child Care Centers: 2,860**

◆ **Total Family Child Care Homes: 25,258**

Congressional District 1

Licensed Child Care Providers 2023

California Child Care Resource & Referral

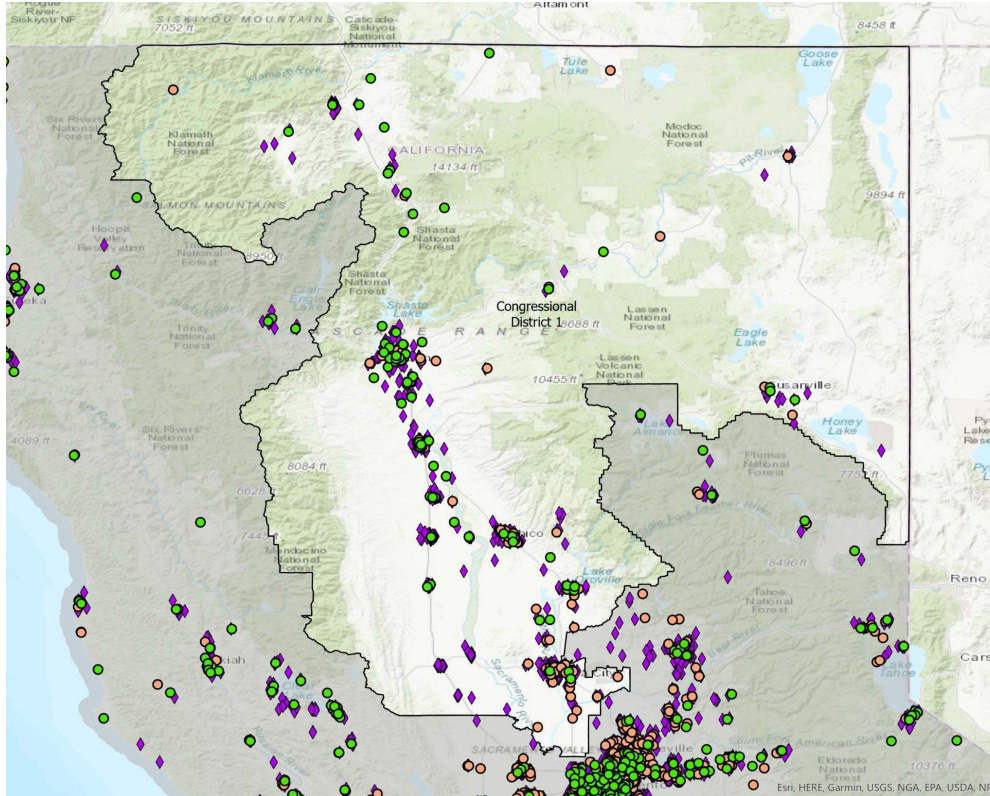
NETWORK

Total Number of Child Care Facilities: 771

- Non-Subsidized Child Care Centers: 140
- Subsidized Child Care Centers: 91
- ◆ Family Child Care Homes: 540

Licensed child care provider data were collected from child care resource and referral (CCR&R) agencies which are state funded community-based organizations that provide on-the-ground child care information and family support services. CCR&R agencies collect local child care supply and demand data.

For statewide and county level data, please visit our [2023 Child Care Portfolio](#).



Source: California Child Care Portfolio, California Child Care Resource & Referral Network (2023).

Note: Subsidized child care centers include those with a direct contract with a local/state/federal agency. Subsidy data do not include programs that accept vouchers.

Congressional District 2

Licensed Child Care Providers 2023

California Child Care Resource & Referral

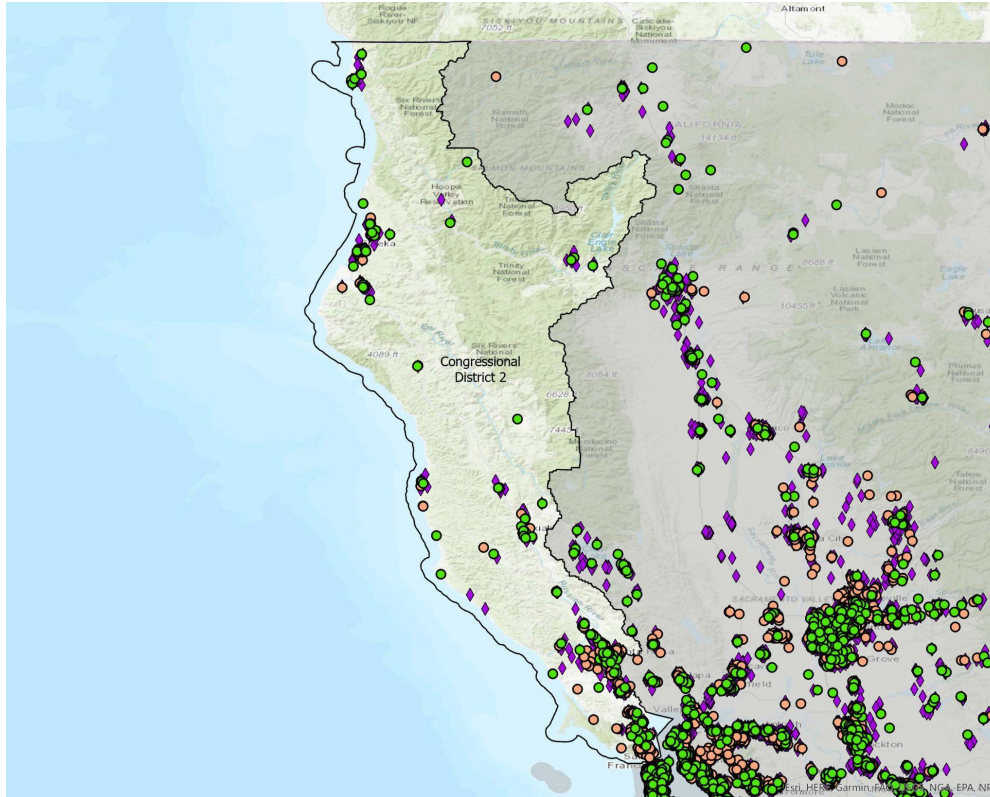
NETWORK

Total Number of Child Care Facilities: 808

- Non-Subsidized Child Care Centers: 213
- Subsidized Child Care Centers: 96
- ◆ Family Child Care Homes: 499

Licensed child care provider data were collected from child care resource and referral (CCR&R) agencies which are state funded community-based organizations that provide on-the-ground child care information and family support services. CCR&R agencies collect local child care supply and demand data.

For statewide and county level data, please visit our [2023 Child Care Portfolio](#).



Source: California Child Care Portfolio, California Child Care Resource & Referral Network (2023).

Note: Subsidized child care centers include those with a direct contract with a local/state/federal agency. Subsidy data do not include programs that accept vouchers.

Congressional District 3

Licensed Child Care Providers 2023

California Child Care Resource & Referral

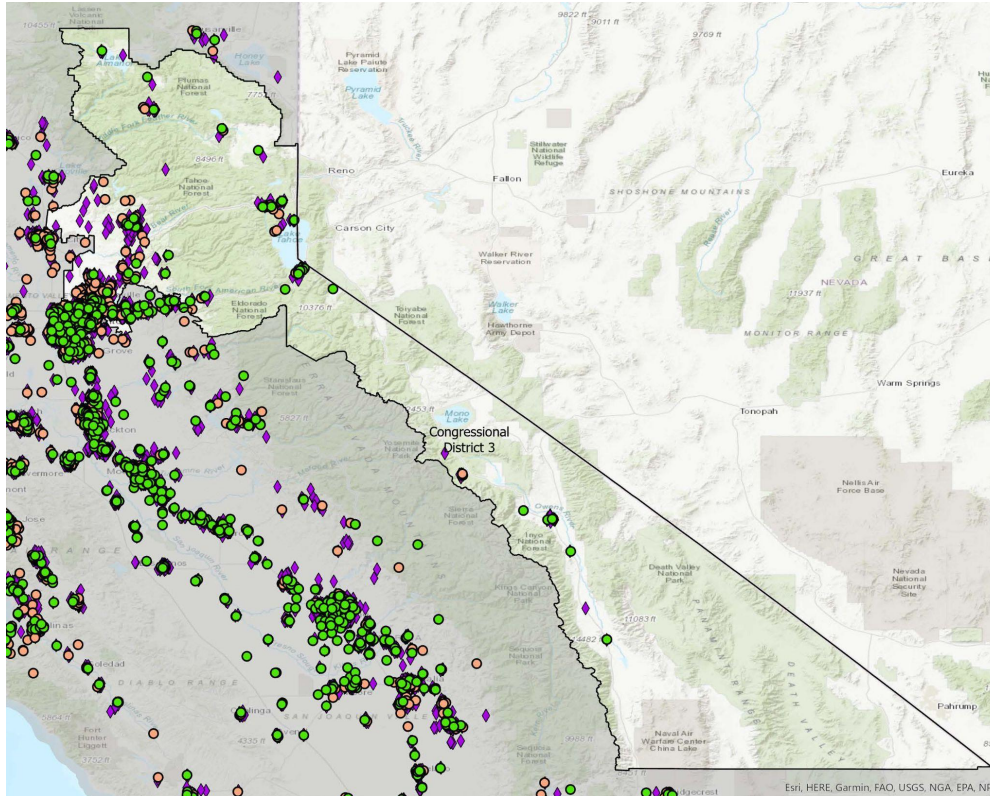
N E T W O R K

Total Number of Child Care Facilities: 691

- Non-Subsidized Child Care Centers: 195
- Subsidized Child Care Centers: 56
- ◆ Family Child Care Homes: 440

Licensed child care provider data were collected from child care resource and referral (CCR&R) agencies which are state funded community-based organizations that provide on-the-ground child care information and family support services. CCR&R agencies collect local child care supply and demand data.

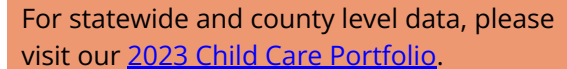
For statewide and county level data, please visit our [2023 Child Care Portfolio](#).



Source: California Child Care Portfolio, California Child Care Resource & Referral Network (2023).

Note: Subsidized child care centers include those with a direct contract with a local/state/federal agency. Subsidy data do not include programs that accept vouchers.

NETWORK



1 Polk Street, Unit 201, San Francisco, CA 94102 • P: 415.882.0234 • F: 415.882.6233 • www.rrnetwork.org

Congressional District 5

Licensed Child Care Providers 2023

California Child Care Resource & Referral

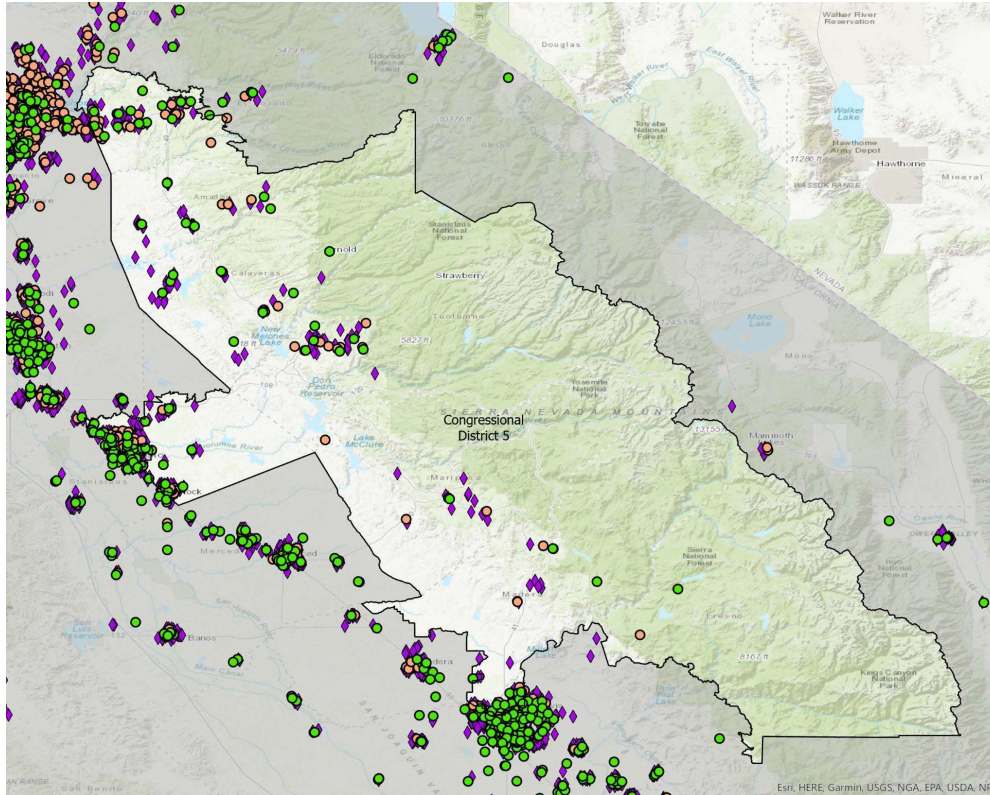
N E T W O R K

Total Number of Child Care Facilities: 596

- Non-Subsidized Child Care Centers: 125
- Subsidized Child Care Centers: 94
- ◆ Family Child Care Homes: 377

Licensed child care provider data were collected from child care resource and referral (CCR&R) agencies which are state funded community-based organizations that provide on-the-ground child care information and family support services. CCR&R agencies collect local child care supply and demand data.

For statewide and county level data, please visit our [2023 Child Care Portfolio](#).

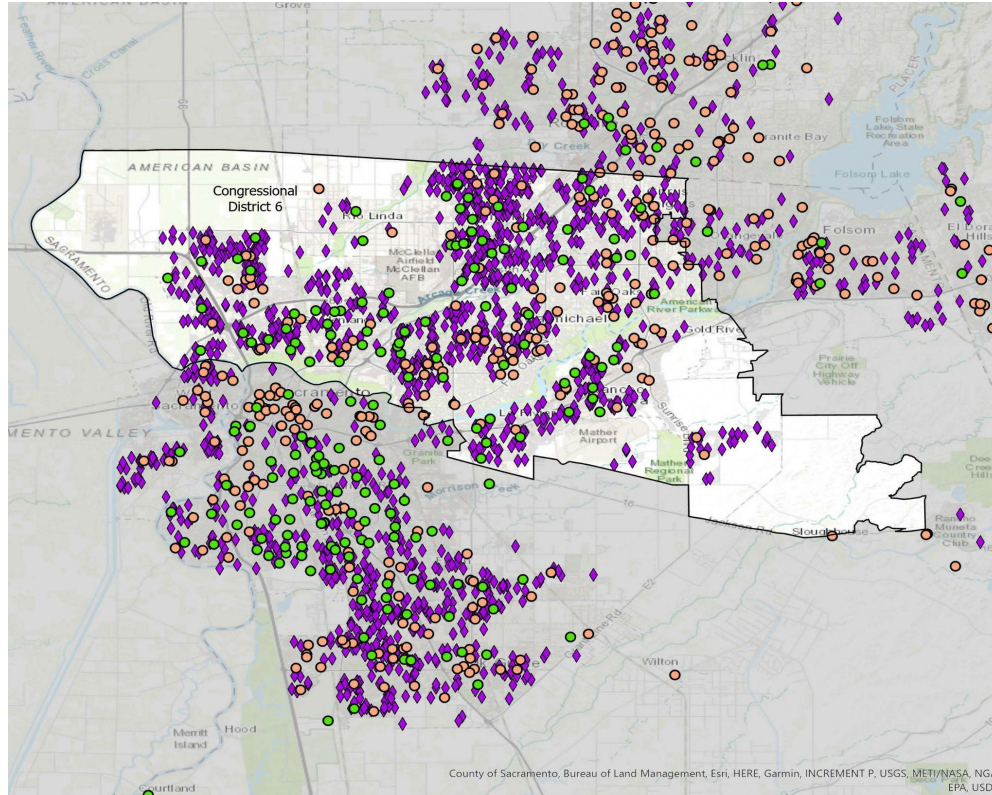


Source: California Child Care Portfolio, California Child Care Resource & Referral Network (2023).

Note: Subsidized child care centers include those with a direct contract with a local/state/federal agency. Subsidy data do not include programs that accept vouchers.

Congressional District 6

Licensed Child Care Providers 2023



California Child Care Resource & Referral

N E T W O R K

Total Number of Child Care Facilities: 1194

- Non-Subsidized Child Care Centers: 117
- Subsidized Child Care Centers: 99
- ◆ Family Child Care Homes: 978

Licensed child care provider data were collected from child care resource and referral (CCR&R) agencies which are state funded community-based organizations that provide on-the-ground child care information and family support services. CCR&R agencies collect local child care supply and demand data.

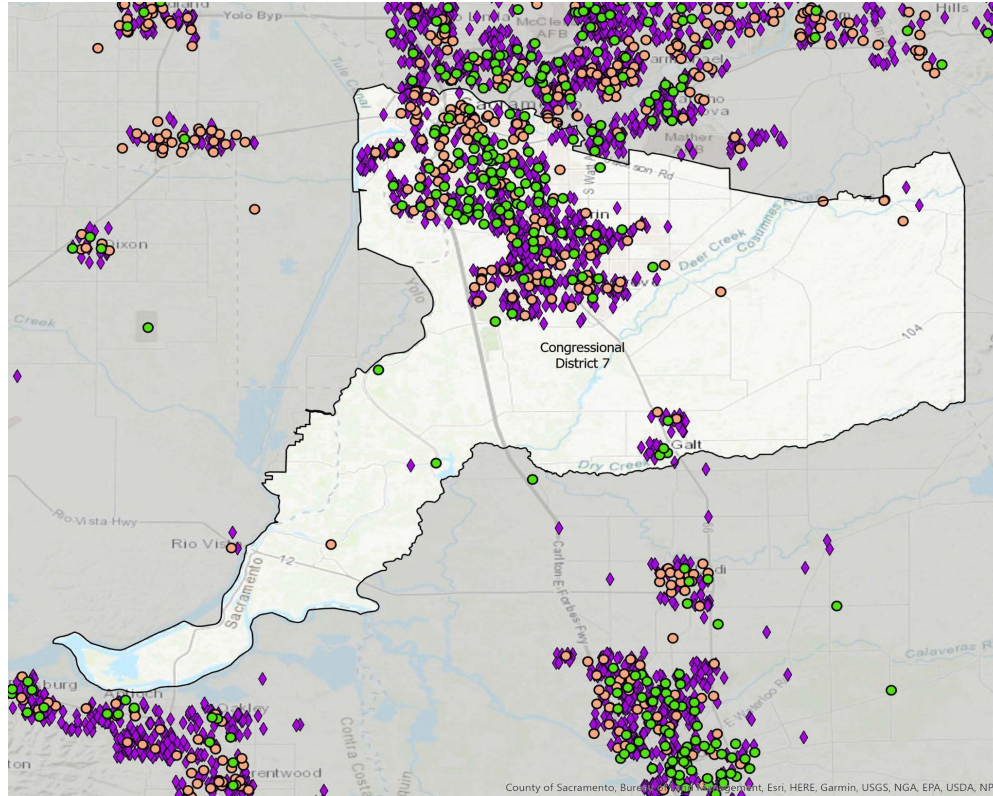
For statewide and county level data, please visit our [2023 Child Care Portfolio](#).

Source: California Child Care Portfolio, California Child Care Resource & Referral Network (2023).

Note: Subsidized child care centers include those with a direct contract with a local/state/federal agency. Subsidy data do not include programs that accept vouchers.

Congressional District 7

Licensed Child Care Providers 2023



California Child Care Resource & Referral

N E T W O R K

Total Number of Child Care Facilities: 847

- Non-Subsidized Child Care Centers: 145
- Subsidized Child Care Centers: 112
- ◆ Family Child Care Homes: 590

Licensed child care provider data were collected from child care resource and referral (CCR&R) agencies which are state funded community-based organizations that provide on-the-ground child care information and family support services. CCR&R agencies collect local child care supply and demand data.

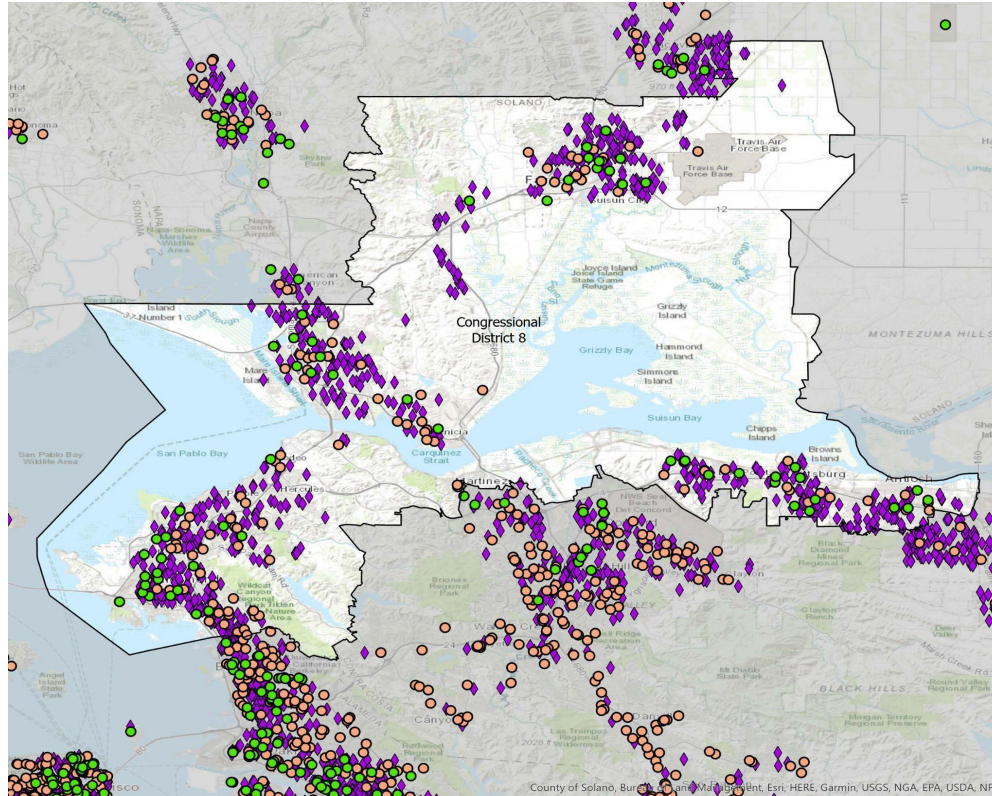
For statewide and county level data, please visit our [2023 Child Care Portfolio](#).

Source: California Child Care Portfolio, California Child Care Resource & Referral Network (2023).

Note: Subsidized child care centers include those with a direct contract with a local/state/federal agency. Subsidy data do not include programs that accept vouchers.

Congressional District 8

Licensed Child Care Providers 2023



Source: California Child Care Portfolio, California Child Care Resource & Referral Network (2023).

Note: Subsidized child care centers include those with a direct contract with a local/state/federal agency. Subsidy data do not include programs that accept vouchers.

California Child Care Resource & Referral

N E T W O R K

Total Number of Child Care Facilities: 772

- Non-Subsidized Child Care Centers: 98
- Subsidized Child Care Centers: 58
- ◆ Family Child Care Homes: 616

Licensed child care provider data were collected from child care resource and referral (CCR&R) agencies which are state funded community-based organizations that provide on-the-ground child care information and family support services. CCR&R agencies collect local child care supply and demand data.

For statewide and county level data, please visit our [2023 Child Care Portfolio](#).

Congressional District 9

Licensed Child Care Providers 2023

California Child Care Resource & Referral

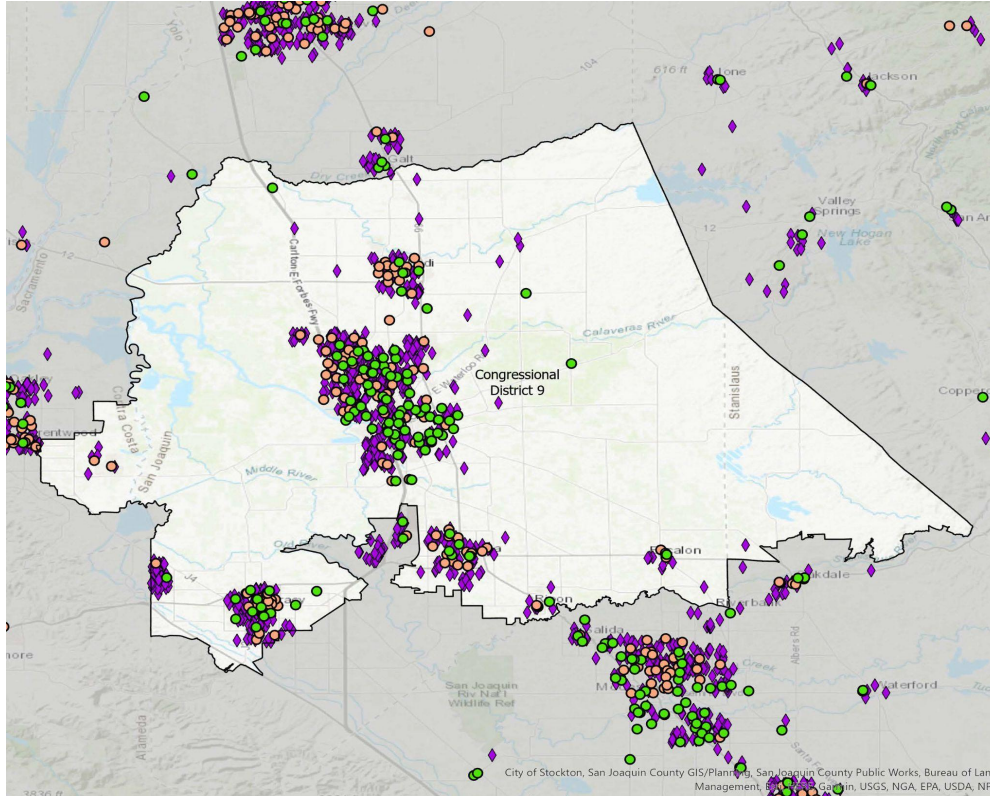
N E T W O R K

Total Number of Child Care Facilities: 822

- Non-Subsidized Child Care Centers: 115
- Subsidized Child Care Centers: 109
- ◆ Family Child Care Homes: 598

Licensed child care provider data were collected from child care resource and referral (CCR&R) agencies which are state funded community-based organizations that provide on-the-ground child care information and family support services. CCR&R agencies collect local child care supply and demand data.

For statewide and county level data, please visit our [2023 Child Care Portfolio](#).



Source: California Child Care Portfolio, California Child Care Resource & Referral Network (2023).

Note: Subsidized child care centers include those with a direct contract with a local/state/federal agency. Subsidy data do not include programs that accept vouchers.

Congressional District 10

Licensed Child Care Providers 2023

California Child Care Resource & Referral

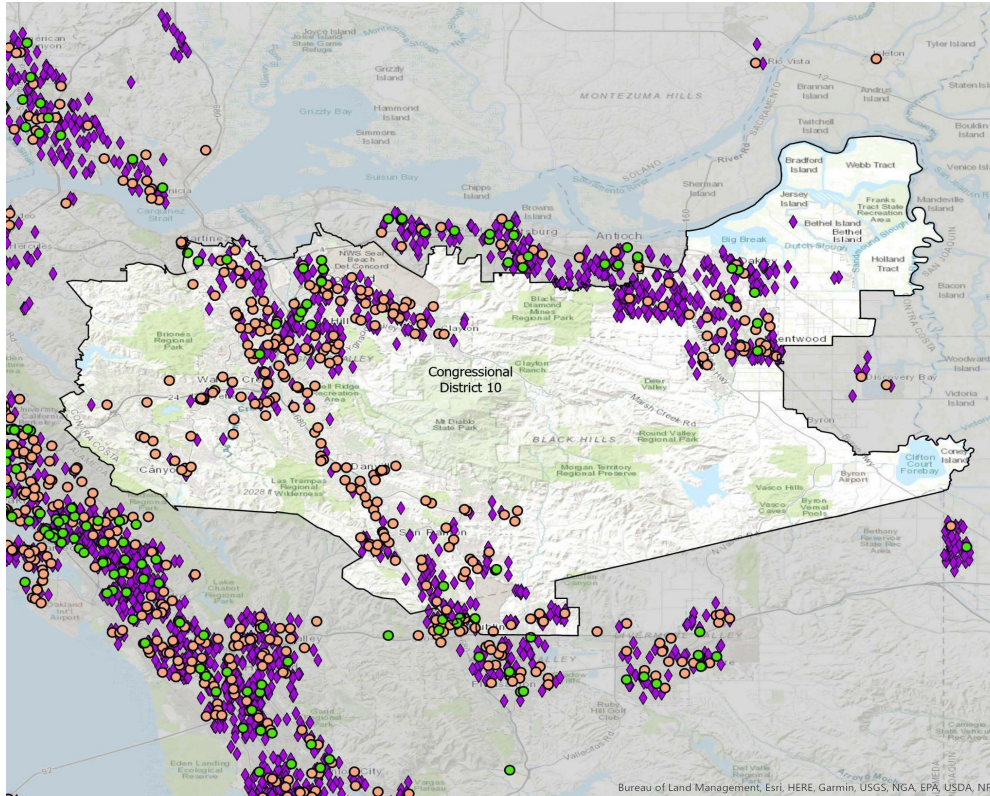
NETWORK

Total Number of Child Care Facilities: 724

- Non-Subsidized Child Care Centers: 228
- Subsidized Child Care Centers: 24
- ◆ Family Child Care Homes: 472

Licensed child care provider data were collected from child care resource and referral (CCR&R) agencies which are state funded community-based organizations that provide on-the-ground child care information and family support services. CCR&R agencies collect local child care supply and demand data.

For statewide and county level data, please visit our [2023 Child Care Portfolio](#).

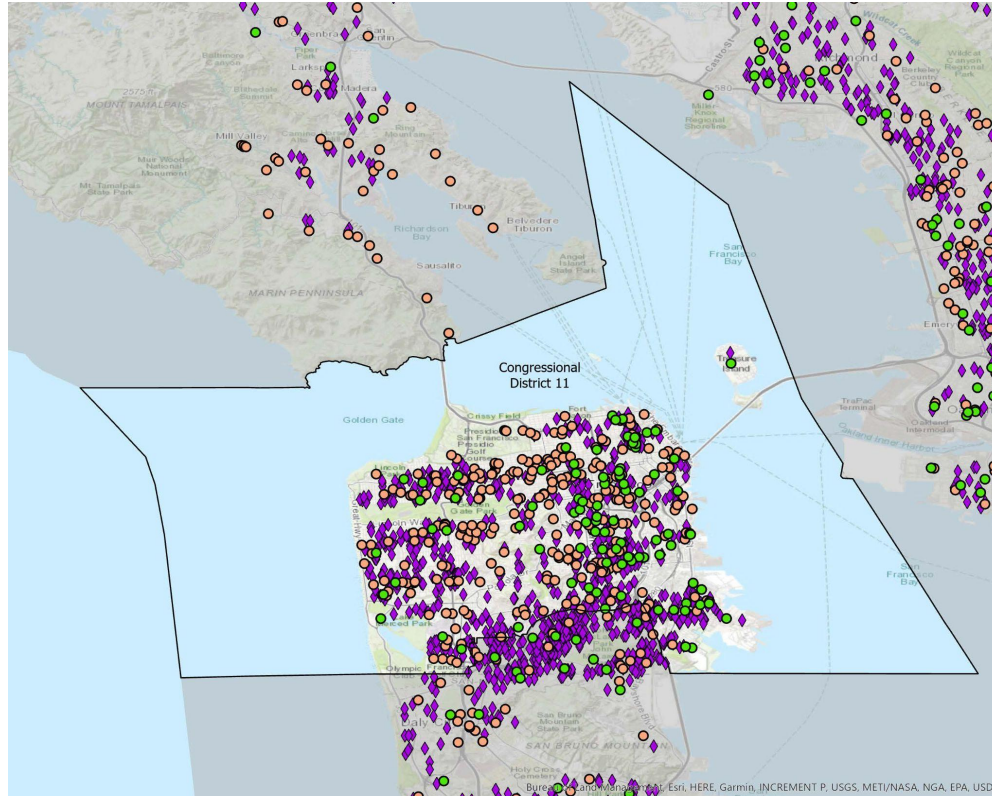


Source: California Child Care Portfolio, California Child Care Resource & Referral Network (2023).

Note: Subsidized child care centers include those with a direct contract with a local/state/federal agency. Subsidy data do not include programs that accept vouchers.

Congressional District 11

Licensed Child Care Providers 2023



California Child Care Resource & Referral

N E T W O R K

Total Number of Child Care Facilities: 1036

- Non-Subsidized Child Care Centers: 263
- Subsidized Child Care Centers: 90
- ◆ Family Child Care Homes: 683

Licensed child care provider data were collected from child care resource and referral (CCR&R) agencies which are state funded community-based organizations that provide on-the-ground child care information and family support services. CCR&R agencies collect local child care supply and demand data.

For statewide and county level data, please visit our [2023 Child Care Portfolio](#).

Source: California Child Care Portfolio, California Child Care Resource & Referral Network (2023).

Note: Subsidized child care centers include those with a direct contract with a local/state/federal agency. Subsidy data do not include programs that accept vouchers.

Congressional District 12

Licensed Child Care Providers 2023

California Child Care Resource & Referral

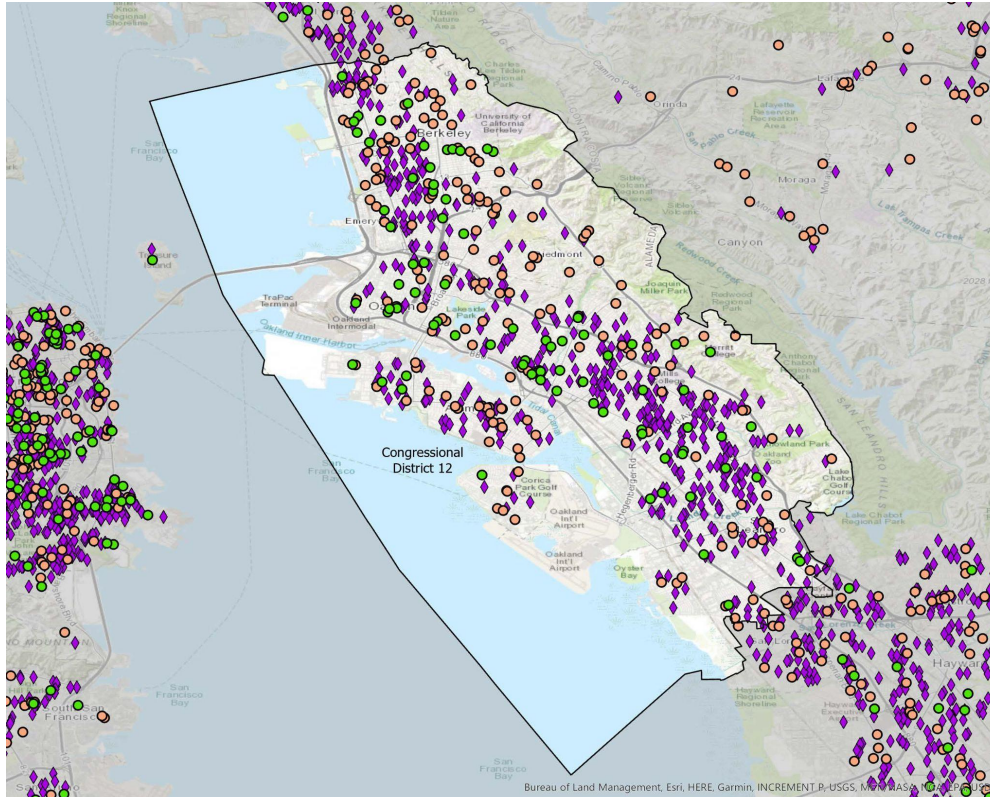
NETWORK

Total Number of Child Care Facilities: 733

- Non-Subsidized Child Care Centers: 181
- Subsidized Child Care Centers: 80
- ◆ Family Child Care Homes: 472

Licensed child care provider data were collected from child care resource and referral (CCR&R) agencies which are state funded community-based organizations that provide on-the-ground child care information and family support services. CCR&R agencies collect local child care supply and demand data.

For statewide and county level data, please visit our [2023 Child Care Portfolio](#).

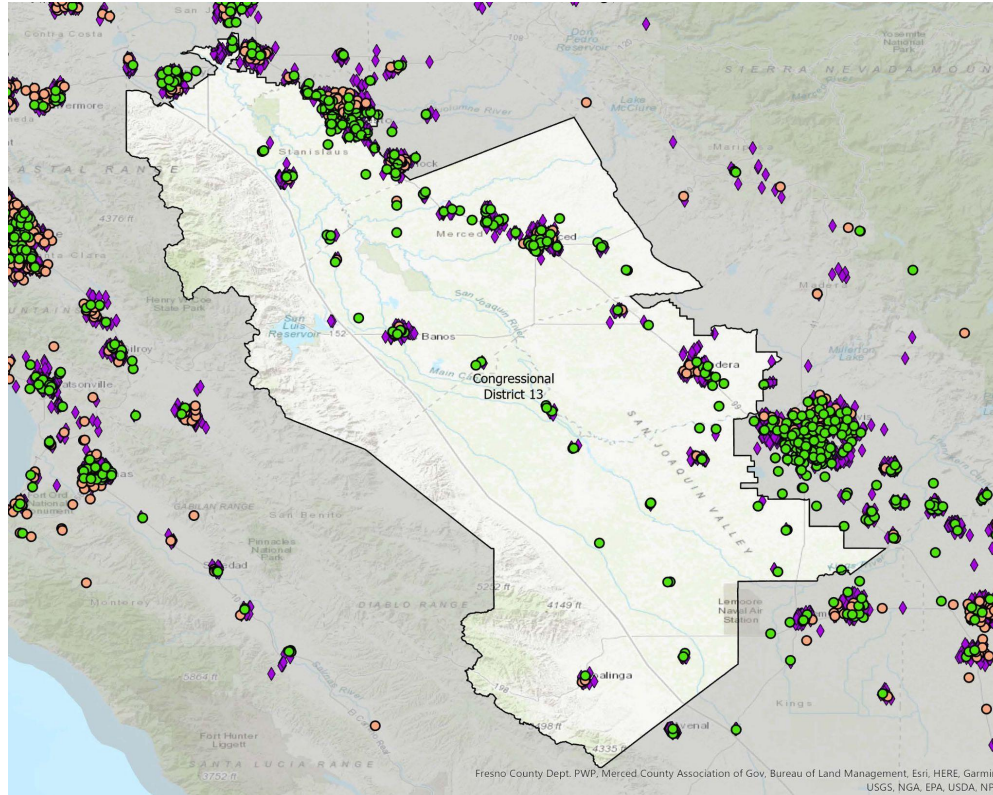


Source: California Child Care Portfolio, California Child Care Resource & Referral Network (2023).

Note: Subsidized child care centers include those with a direct contract with a local/state/federal agency. Subsidy data do not include programs that accept vouchers.

Congressional District 13

Licensed Child Care Providers 2023



California Child Care Resource & Referral

N E T W O R K

Total Number of Child Care Facilities: 700

- Non-Subsidized Child Care Centers: 45
- Subsidized Child Care Centers: 145
- ◆ Family Child Care Homes: 510

Licensed child care provider data were collected from child care resource and referral (CCR&R) agencies which are state funded community-based organizations that provide on-the-ground child care information and family support services. CCR&R agencies collect local child care supply and demand data.

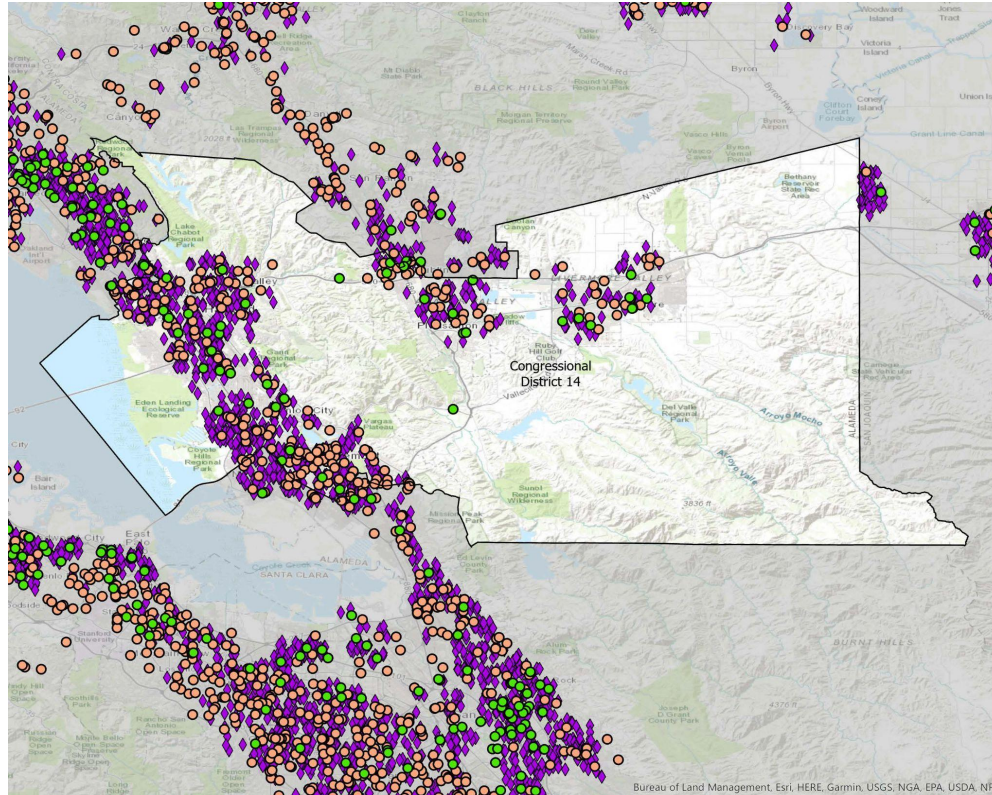
For statewide and county level data, please visit our [2023 Child Care Portfolio](#).

Source: California Child Care Portfolio, California Child Care Resource & Referral Network (2023).

Note: Subsidized child care centers include those with a direct contract with a local/state/federal agency. Subsidy data do not include programs that accept vouchers.

Congressional District 14

Licensed Child Care Providers 2023



Source: California Child Care Portfolio, California Child Care Resource & Referral Network (2023).

Note: Subsidized child care centers include those with a direct contract with a local/state/federal agency. Subsidy data do not include programs that accept vouchers.

California Child Care Resource & Referral

N E T W O R K

Total Number of Child Care Facilities: 879

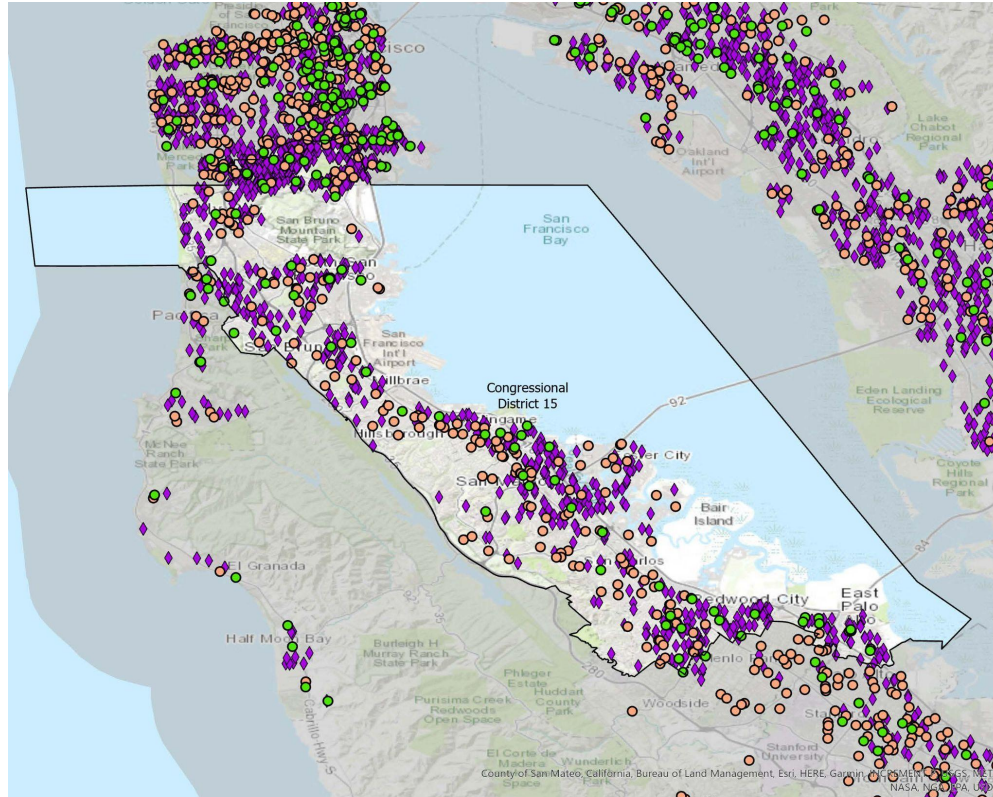
- Non-Subsidized Child Care Centers: 203
- Subsidized Child Care Centers: 42
- ◆ Family Child Care Homes: 634

Licensed child care provider data were collected from child care resource and referral (CCR&R) agencies which are state funded community-based organizations that provide on-the-ground child care information and family support services. CCR&R agencies collect local child care supply and demand data.

For statewide and county level data, please visit our [2023 Child Care Portfolio](#).

Congressional District 15

Licensed Child Care Providers 2023



California Child Care Resource & Referral

N E T W O R K

Total Number of Child Care Facilities: 991

- Non-Subsidized Child Care Centers: 181
- Subsidized Child Care Centers: 63
- ◆ Family Child Care Homes: 747

Licensed child care provider data were collected from child care resource and referral (CCR&R) agencies which are state funded community-based organizations that provide on-the-ground child care information and family support services. CCR&R agencies collect local child care supply and demand data.

For statewide and county level data, please visit our [2023 Child Care Portfolio](#).

Source: California Child Care Portfolio, California Child Care Resource & Referral Network (2023).

Note: Subsidized child care centers include those with a direct contract with a local/state/federal agency. Subsidy data do not include programs that accept vouchers.

Congressional District 16

Licensed Child Care Providers 2023

California Child Care Resource & Referral

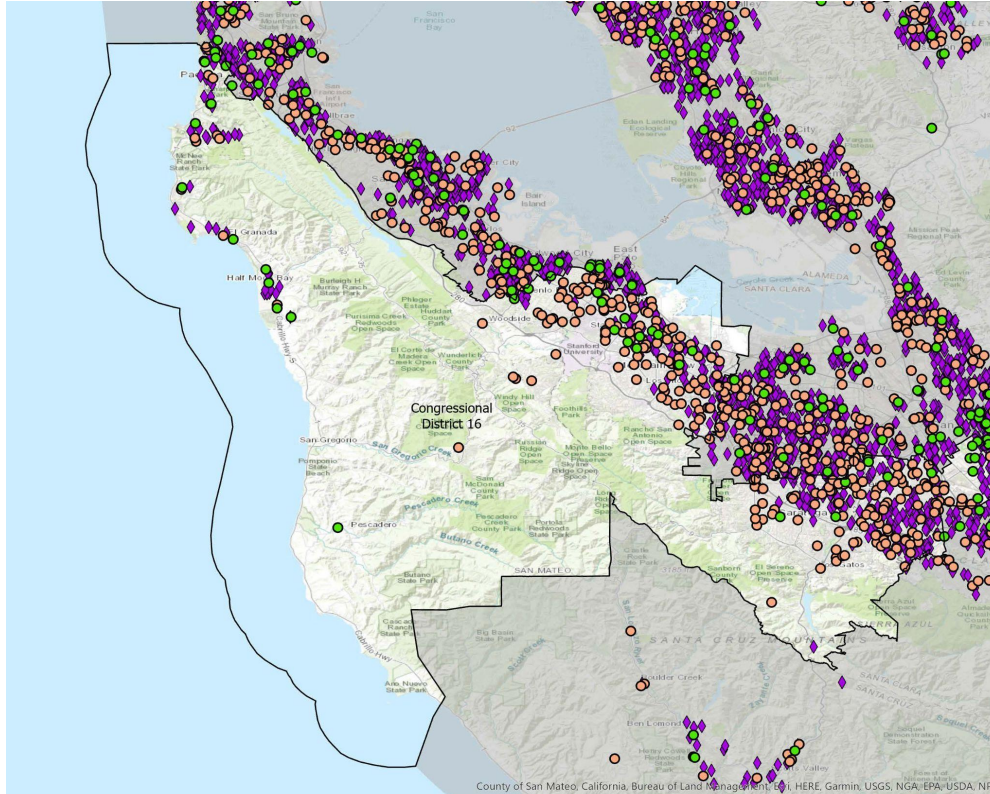
NETWORK

Total Number of Child Care Facilities: 673

- Non-Subsidized Child Care Centers: 283
- Subsidized Child Care Centers: 46
- ◆ Family Child Care Homes: 344

Licensed child care provider data were collected from child care resource and referral (CCR&R) agencies which are state funded community-based organizations that provide on-the-ground child care information and family support services. CCR&R agencies collect local child care supply and demand data.

For statewide and county level data, please visit our [2023 Child Care Portfolio](#).



Source: California Child Care Portfolio, California Child Care Resource & Referral Network (2023).

Note: Subsidized child care centers include those with a direct contract with a local/state/federal agency. Subsidy data do not include programs that accept vouchers.

Congressional District 17

Licensed Child Care Providers 2023

California Child Care Resource & Referral

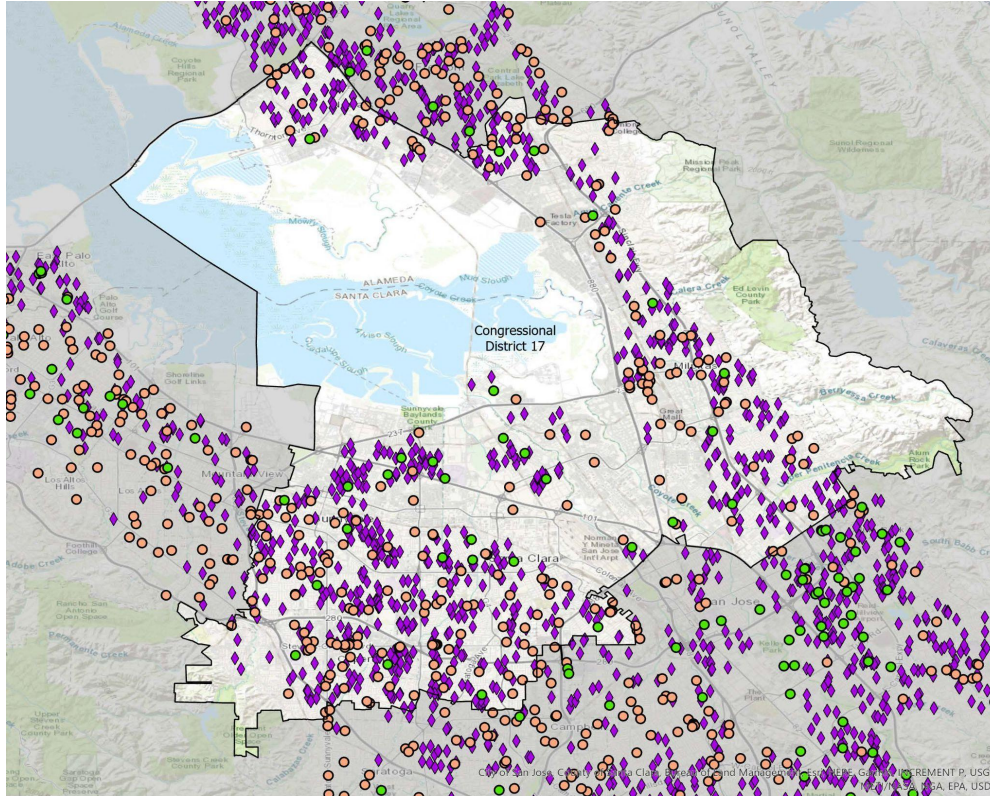
N E T W O R K

Total Number of Child Care Facilities: 893

- Non-Subsidized Child Care Centers: 222
- Subsidized Child Care Centers: 33
- ◆ Family Child Care Homes: 638

Licensed child care provider data were collected from child care resource and referral (CCR&R) agencies which are state funded community-based organizations that provide on-the-ground child care information and family support services. CCR&R agencies collect local child care supply and demand data.

For statewide and county level data, please visit our [2023 Child Care Portfolio](#).



Source: California Child Care Portfolio, California Child Care Resource & Referral Network (2023).

Note: Subsidized child care centers include those with a direct contract with a local/state/federal agency. Subsidy data do not include programs that accept vouchers.

Congressional District 18

Licensed Child Care Providers 2023

California Child Care Resource & Referral

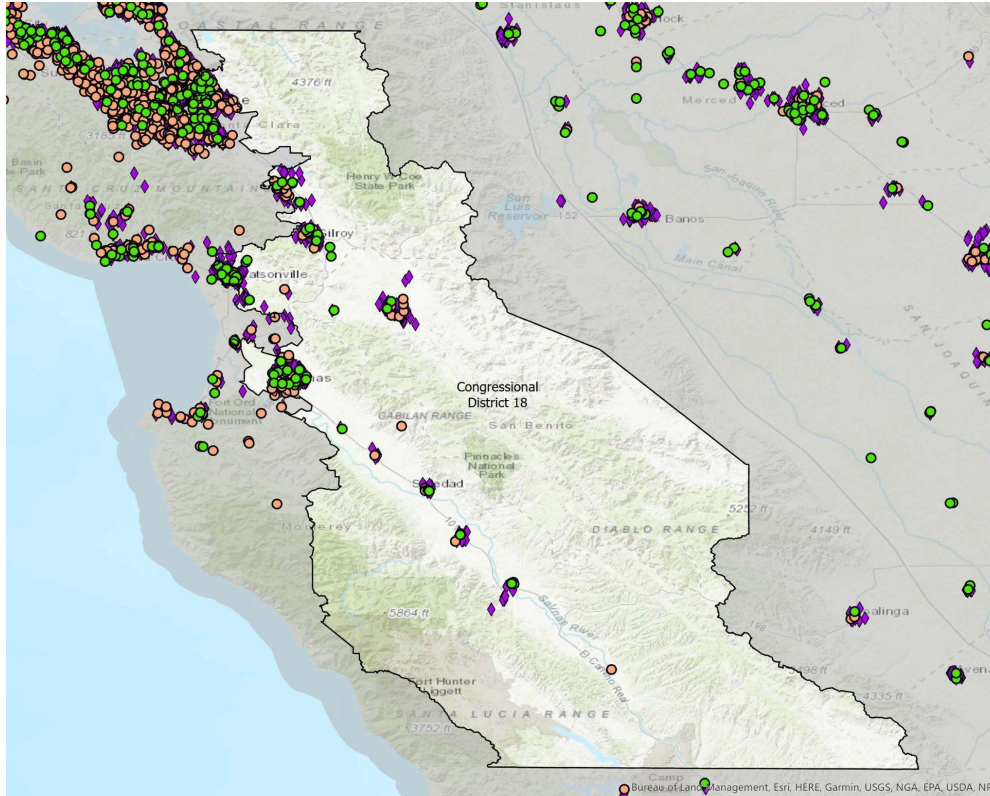
N E T W O R K

Total Number of Child Care Facilities: 923

- Non-Subsidized Child Care Centers: 89
- Subsidized Child Care Centers: 99
- ◆ Family Child Care Homes: 735

Licensed child care provider data were collected from child care resource and referral (CCR&R) agencies which are state funded community-based organizations that provide on-the-ground child care information and family support services. CCR&R agencies collect local child care supply and demand data.

For statewide and county level data, please visit our [2023 Child Care Portfolio](#).

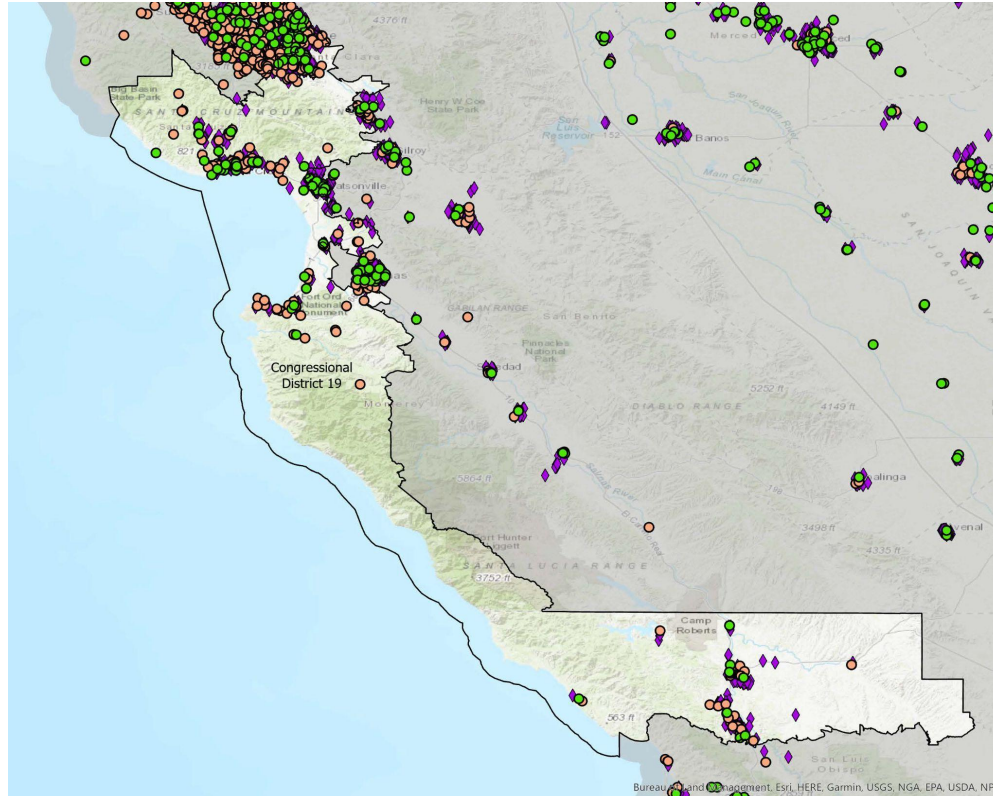


Source: California Child Care Portfolio, California Child Care Resource & Referral Network (2023).

Note: Subsidized child care centers include those with a direct contract with a local/state/federal agency. Subsidy data do not include programs that accept vouchers.

Congressional District 19

Licensed Child Care Providers 2023



California Child Care Resource & Referral

N E T W O R K

Total Number of Child Care Facilities: 618

- Non-Subsidized Child Care Centers: 167
- Subsidized Child Care Centers: 47
- ◆ Family Child Care Homes: 404

Licensed child care provider data were collected from child care resource and referral (CCR&R) agencies which are state funded community-based organizations that provide on-the-ground child care information and family support services. CCR&R agencies collect local child care supply and demand data.

For statewide and county level data, please visit our [2023 Child Care Portfolio](#).

Source: California Child Care Portfolio, California Child Care Resource & Referral Network (2023).

Note: Subsidized child care centers include those with a direct contract with a local/state/federal agency. Subsidy data do not include programs that accept vouchers.

Congressional District 20

Licensed Child Care Providers 2023

California Child Care Resource & Referral

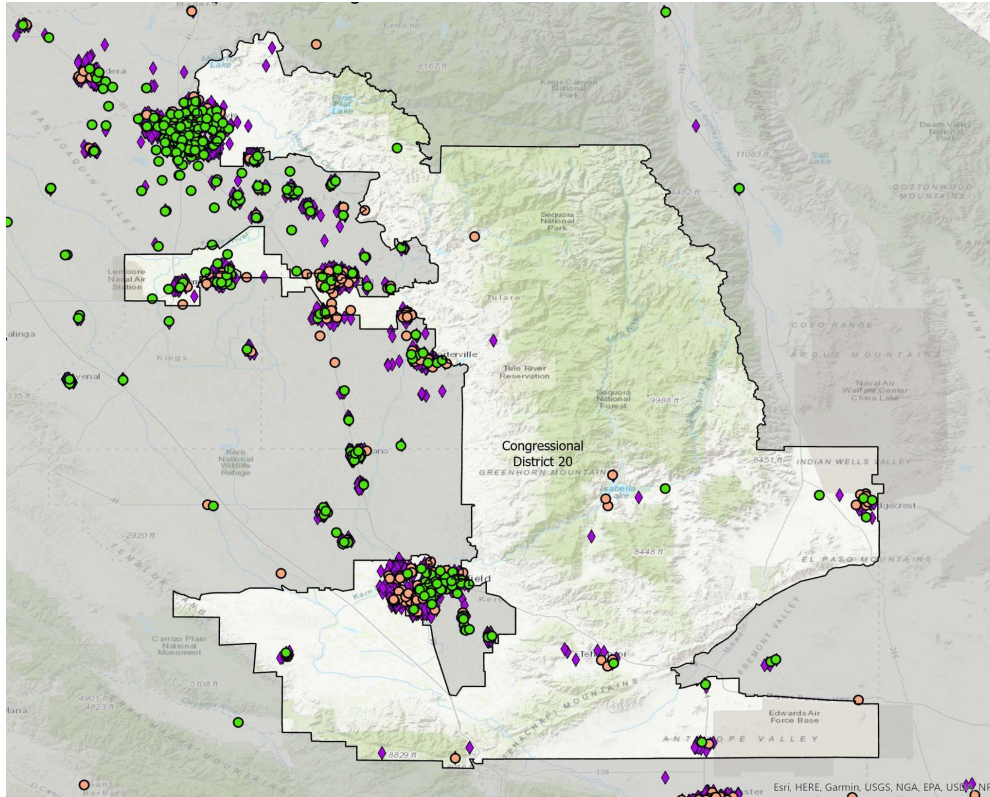
NETWORK

Total Number of Child Care Facilities: 618

- Non-Subsidized Child Care Centers: 95
- Subsidized Child Care Centers: 50
- ◆ Family Child Care Homes: 473

Licensed child care provider data were collected from child care resource and referral (CCR&R) agencies which are state funded community-based organizations that provide on-the-ground child care information and family support services. CCR&R agencies collect local child care supply and demand data.

For statewide and county level data, please visit our [2023 Child Care Portfolio](#).

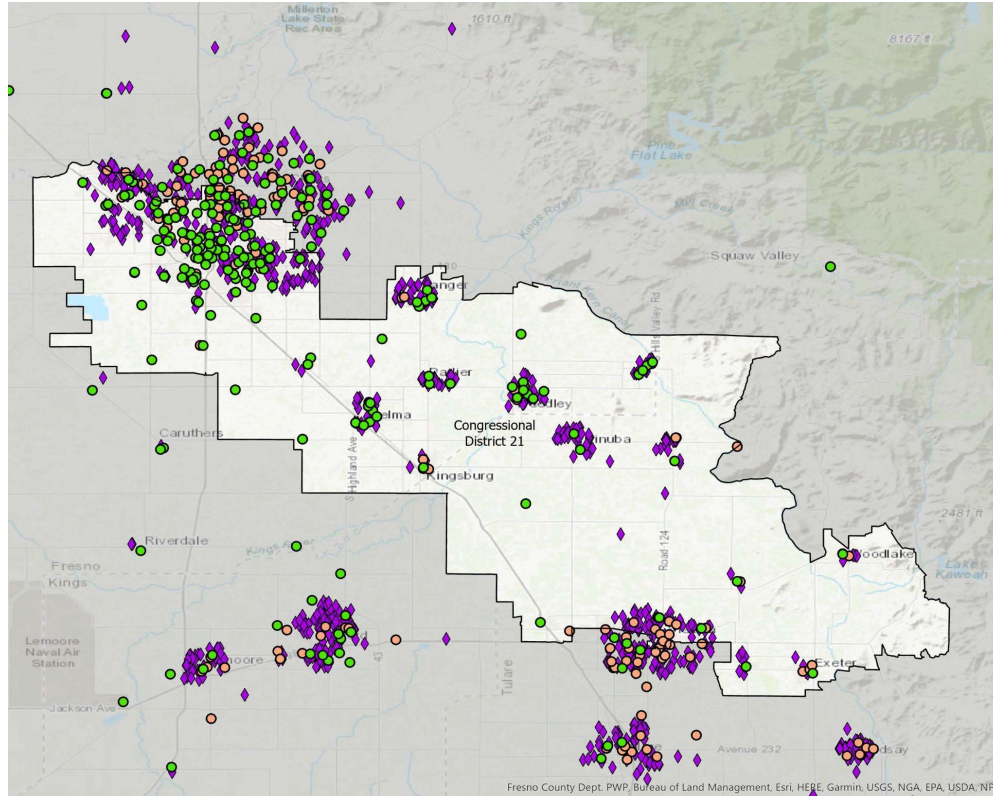


Source: California Child Care Portfolio, California Child Care Resource & Referral Network (2023).

Note: Subsidized child care centers include those with a direct contract with a local/state/federal agency. Subsidy data do not include programs that accept vouchers.

Congressional District 21

Licensed Child Care Providers 2023



California Child Care Resource & Referral

N E T W O R K

Total Number of Child Care Facilities: 639

- Non-Subsidized Child Care Centers: 69
- Subsidized Child Care Centers: 145
- ◆ Family Child Care Homes: 425

Licensed child care provider data were collected from child care resource and referral (CCR&R) agencies which are state funded community-based organizations that provide on-the-ground child care information and family support services. CCR&R agencies collect local child care supply and demand data.

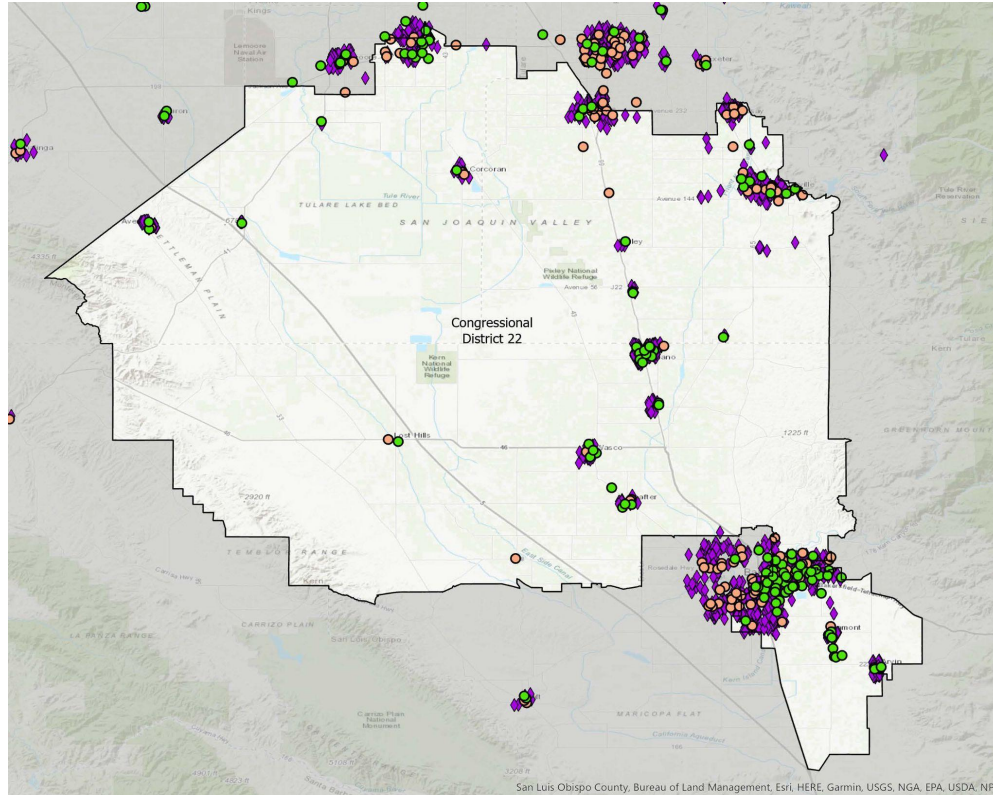
For statewide and county level data, please visit our [2023 Child Care Portfolio](#).

Source: California Child Care Portfolio, California Child Care Resource & Referral Network (2023).

Note: Subsidized child care centers include those with a direct contract with a local/state/federal agency. Subsidy data do not include programs that accept vouchers.

Congressional District 22

Licensed Child Care Providers 2023



California Child Care Resource & Referral

N E T W O R K

Total Number of Child Care Facilities: 944

- Non-Subsidized Child Care Centers: 79
- Subsidized Child Care Centers: 112
- ◆ Family Child Care Homes: 753

Licensed child care provider data were collected from child care resource and referral (CCR&R) agencies which are state funded community-based organizations that provide on-the-ground child care information and family support services. CCR&R agencies collect local child care supply and demand data.

For statewide and county level data, please visit our [2023 Child Care Portfolio](#).

Source: California Child Care Portfolio, California Child Care Resource & Referral Network (2023).

Note: Subsidized child care centers include those with a direct contract with a local/state/federal agency. Subsidy data do not include programs that accept vouchers.

Congressional District 23

Licensed Child Care Providers 2023

California Child Care Resource & Referral

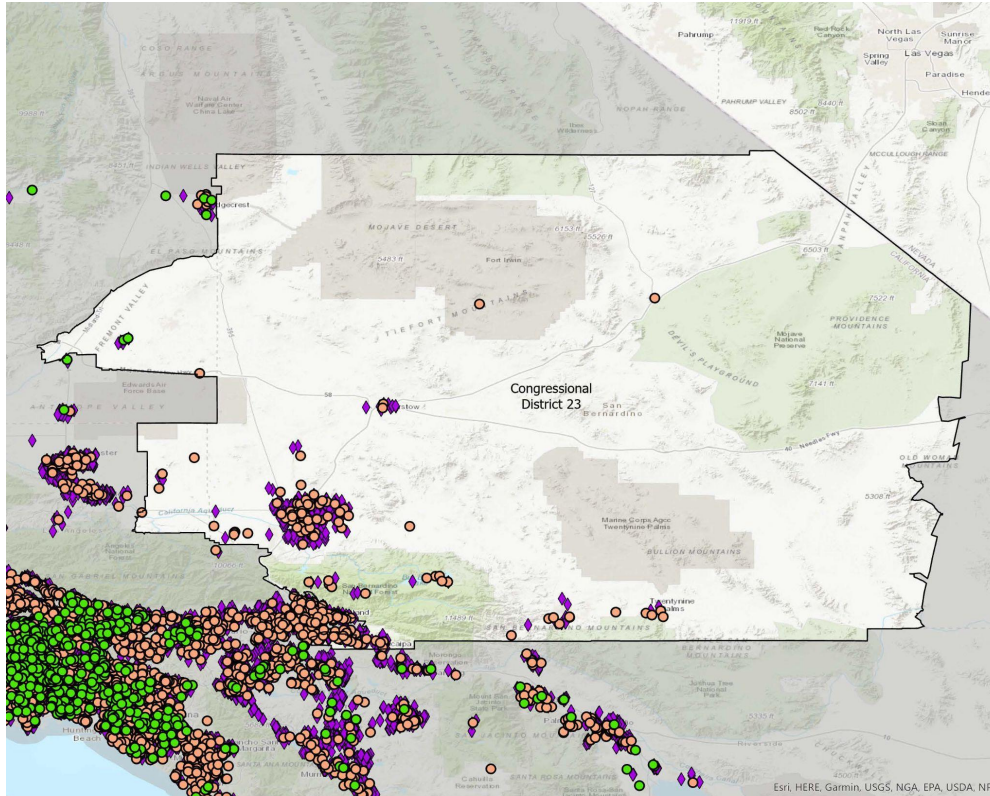
NETWORK

Total Number of Child Care Facilities: 490

- Non-Subsidized Child Care Centers: 124
- Subsidized Child Care Centers: 2
- ◆ Family Child Care Homes: 364

Licensed child care provider data were collected from child care resource and referral (CCR&R) agencies which are state funded community-based organizations that provide on-the-ground child care information and family support services. CCR&R agencies collect local child care supply and demand data.

For statewide and county level data, please visit our [2023 Child Care Portfolio](#).

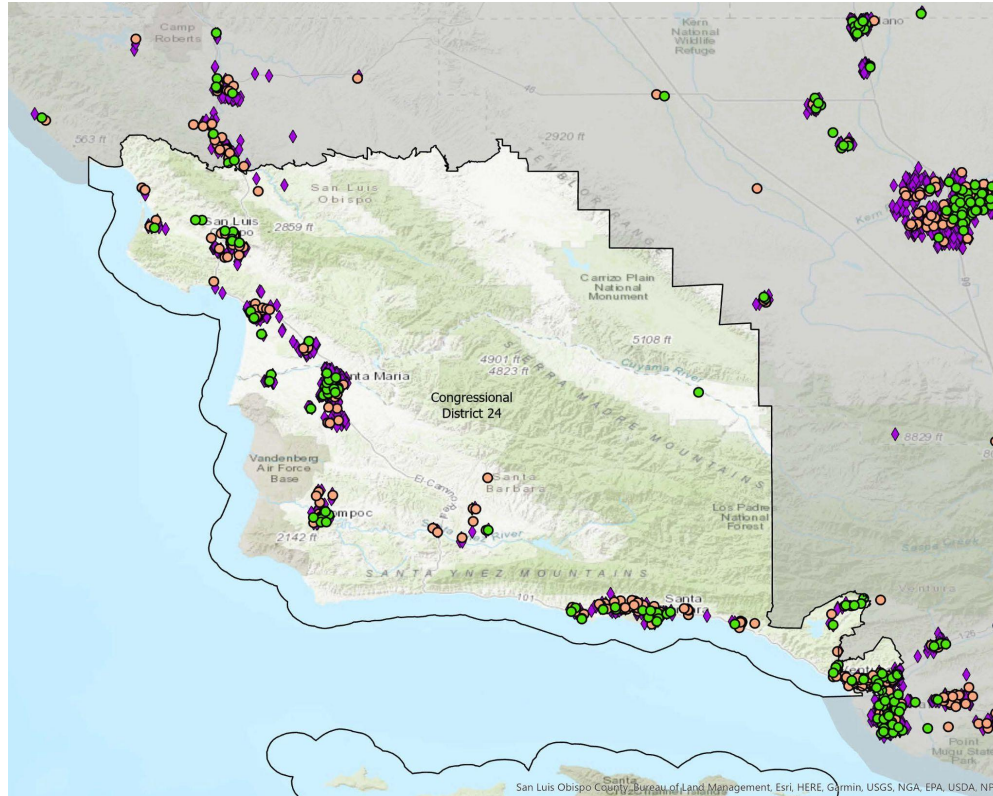


Source: California Child Care Portfolio, California Child Care Resource & Referral Network (2023).

Note: Subsidized child care centers include those with a direct contract with a local/state/federal agency. Subsidy data do not include programs that accept vouchers.

Congressional District 24

Licensed Child Care Providers 2023



California Child Care Resource & Referral

N E T W O R K

Total Number of Child Care Facilities: 892

- Non-Subsidized Child Care Centers: 183
- Subsidized Child Care Centers: 93
- ◆ Family Child Care Homes: 616

Licensed child care provider data were collected from child care resource and referral (CCR&R) agencies which are state funded community-based organizations that provide on-the-ground child care information and family support services. CCR&R agencies collect local child care supply and demand data.

For statewide and county level data, please visit our [2023 Child Care Portfolio](#).

Source: California Child Care Portfolio, California Child Care Resource & Referral Network (2023).

Note: Subsidized child care centers include those with a direct contract with a local/state/federal agency. Subsidy data do not include programs that accept vouchers.

Congressional District 25

Licensed Child Care Providers 2023

California Child Care Resource & Referral

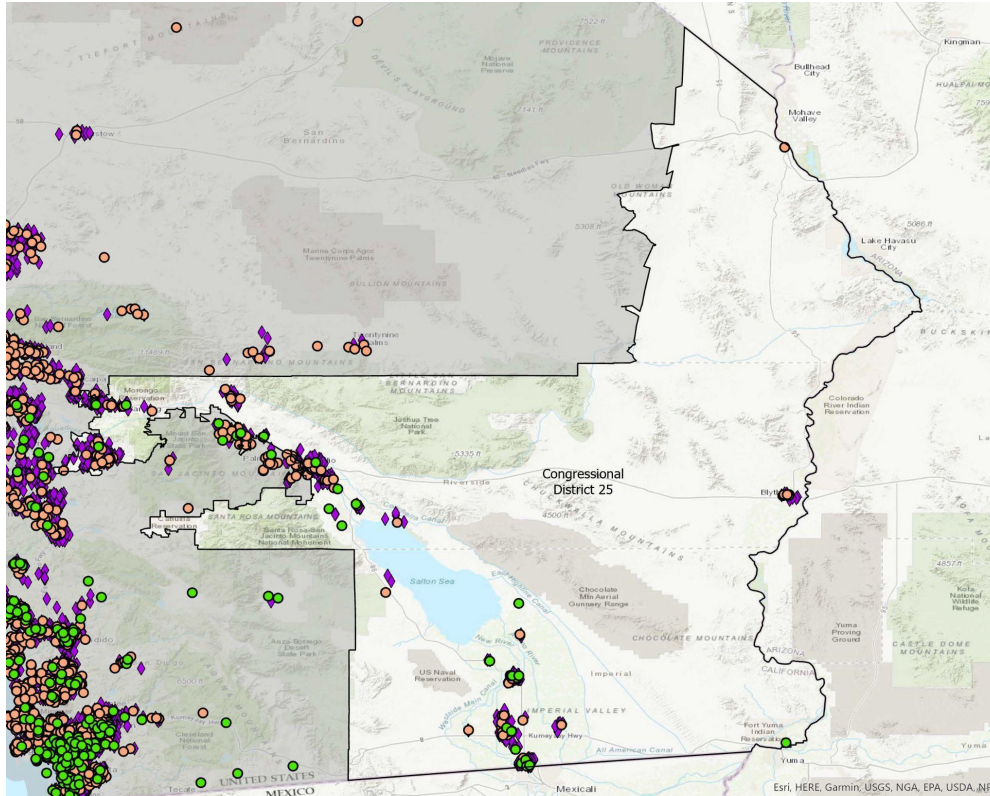
N E T W O R K

Total Number of Child Care Facilities: 811

- Non-Subsidized Child Care Centers: 103
- Subsidized Child Care Centers: 29
- ◆ Family Child Care Homes: 679

Licensed child care provider data were collected from child care resource and referral (CCR&R) agencies which are state funded community-based organizations that provide on-the-ground child care information and family support services. CCR&R agencies collect local child care supply and demand data.

For statewide and county level data, please visit our [2023 Child Care Portfolio](#).



Source: California Child Care Portfolio, California Child Care Resource & Referral Network (2023).

Note: Subsidized child care centers include those with a direct contract with a local/state/federal agency. Subsidy data do not include programs that accept vouchers.

Congressional District 26

Licensed Child Care Providers 2023

California Child Care Resource & Referral

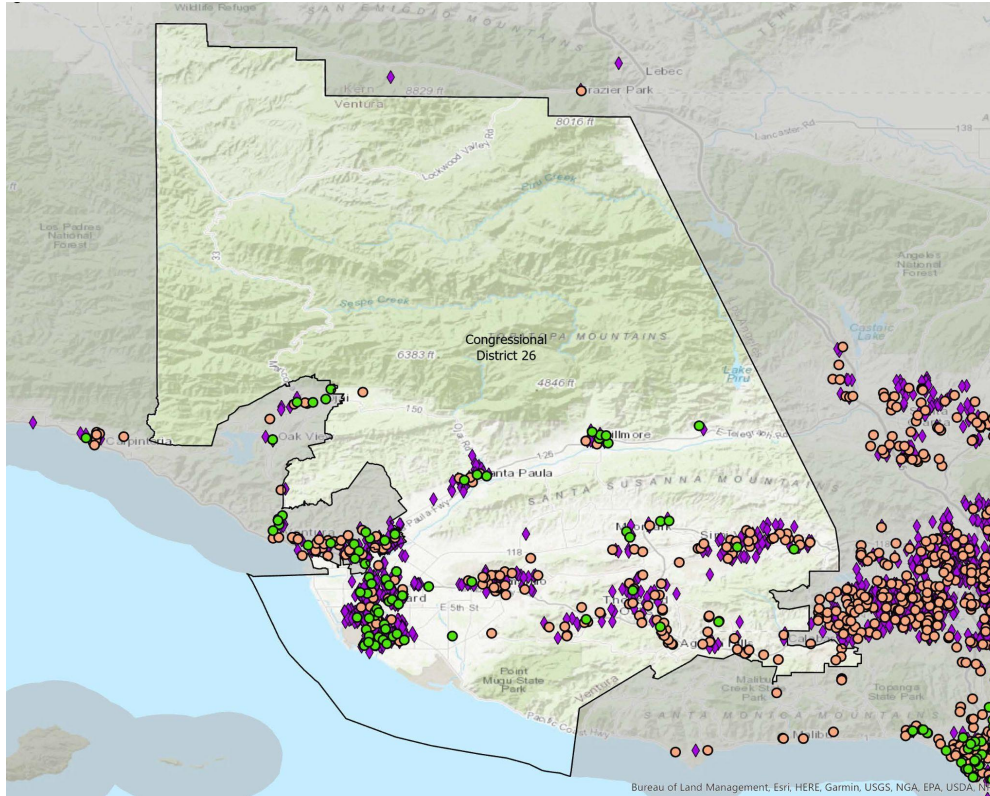
N E T W O R K

Total Number of Child Care Facilities: 658

- Non-Subsidized Child Care Centers: 129
- Subsidized Child Care Centers: 60
- ◆ Family Child Care Homes: 469

Licensed child care provider data were collected from child care resource and referral (CCR&R) agencies which are state funded community-based organizations that provide on-the-ground child care information and family support services. CCR&R agencies collect local child care supply and demand data.

For statewide and county level data, please visit our [2023 Child Care Portfolio](#).



Source: California Child Care Portfolio, California Child Care Resource & Referral Network (2023).

Note: Subsidized child care centers include those with a direct contract with a local/state/federal agency. Subsidy data do not include programs that accept vouchers.

Congressional District 27

Licensed Child Care Providers 2023

California Child Care Resource & Referral

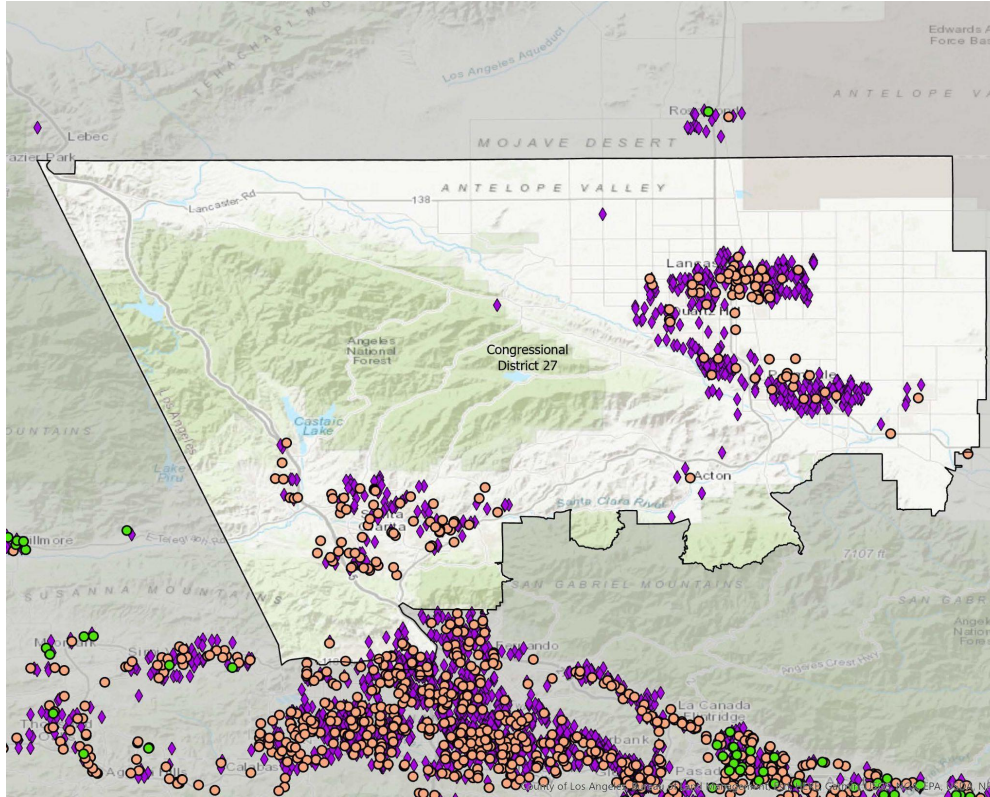
NETWORK

Total Number of Child Care Facilities: 713

- Non-Subsidized Child Care Centers: 180
- Subsidized Child Care Centers: 0
- ◆ Family Child Care Homes: 533

Licensed child care provider data were collected from child care resource and referral (CCR&R) agencies which are state funded community-based organizations that provide on-the-ground child care information and family support services. CCR&R agencies collect local child care supply and demand data.

For statewide and county level data, please visit our [2023 Child Care Portfolio](#).



Source: California Child Care Portfolio, California Child Care Resource & Referral Network (2023).

Note: Subsidized child care centers include those with a direct contract with a local/state/federal agency. Subsidy data do not include programs that accept vouchers.

Congressional District 28

Licensed Child Care Providers 2023

California Child Care Resource & Referral

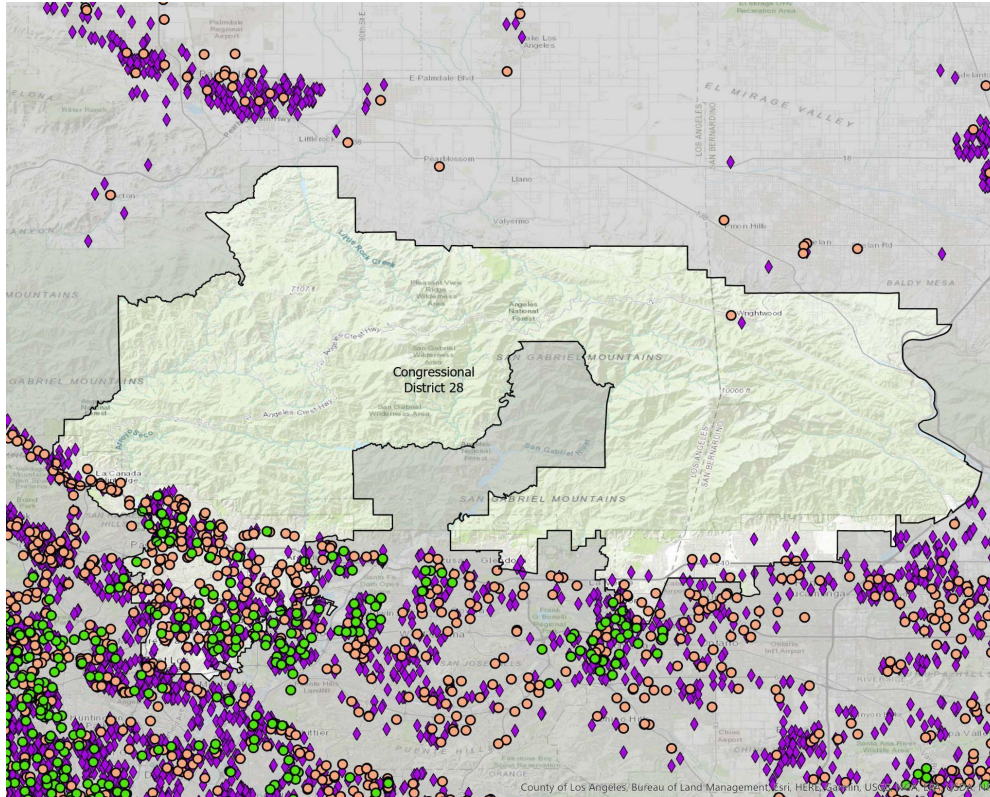
N E T W O R K

Total Number of Child Care Facilities: 458

- Non-Subsidized Child Care Centers: 175
- Subsidized Child Care Centers: 50
- ◆ Family Child Care Homes: 233

Licensed child care provider data were collected from child care resource and referral (CCR&R) agencies which are state funded community-based organizations that provide on-the-ground child care information and family support services. CCR&R agencies collect local child care supply and demand data.

For statewide and county level data, please visit our [2023 Child Care Portfolio](#).



Source: California Child Care Portfolio, California Child Care Resource & Referral Network (2023).

Note: Subsidized child care centers include those with a direct contract with a local/state/federal agency. Subsidy data do not include programs that accept vouchers.

Congressional District 29

Licensed Child Care Providers 2023

California Child Care Resource & Referral

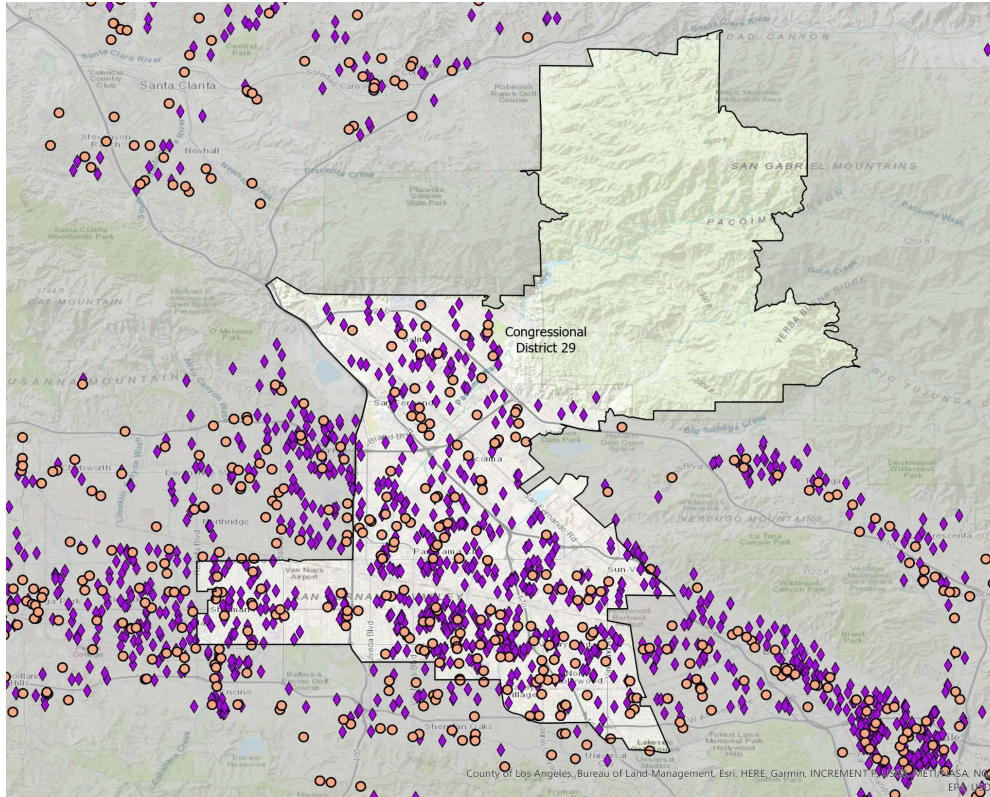
NETWORK

Total Number of Child Care Facilities: 654

- Non-Subsidized Child Care Centers: 175
- Subsidized Child Care Centers: 0
- ◆ Family Child Care Homes: 479

Licensed child care provider data were collected from child care resource and referral (CCR&R) agencies which are state funded community-based organizations that provide on-the-ground child care information and family support services. CCR&R agencies collect local child care supply and demand data.

For statewide and county level data, please visit our [2023 Child Care Portfolio](#).



Source: California Child Care Portfolio, California Child Care Resource & Referral Network (2023).

Note: Subsidized child care centers include those with a direct contract with a local/state/federal agency. Subsidy data do not include programs that accept vouchers.

Congressional District 30

Licensed Child Care Providers 2023

California Child Care Resource & Referral

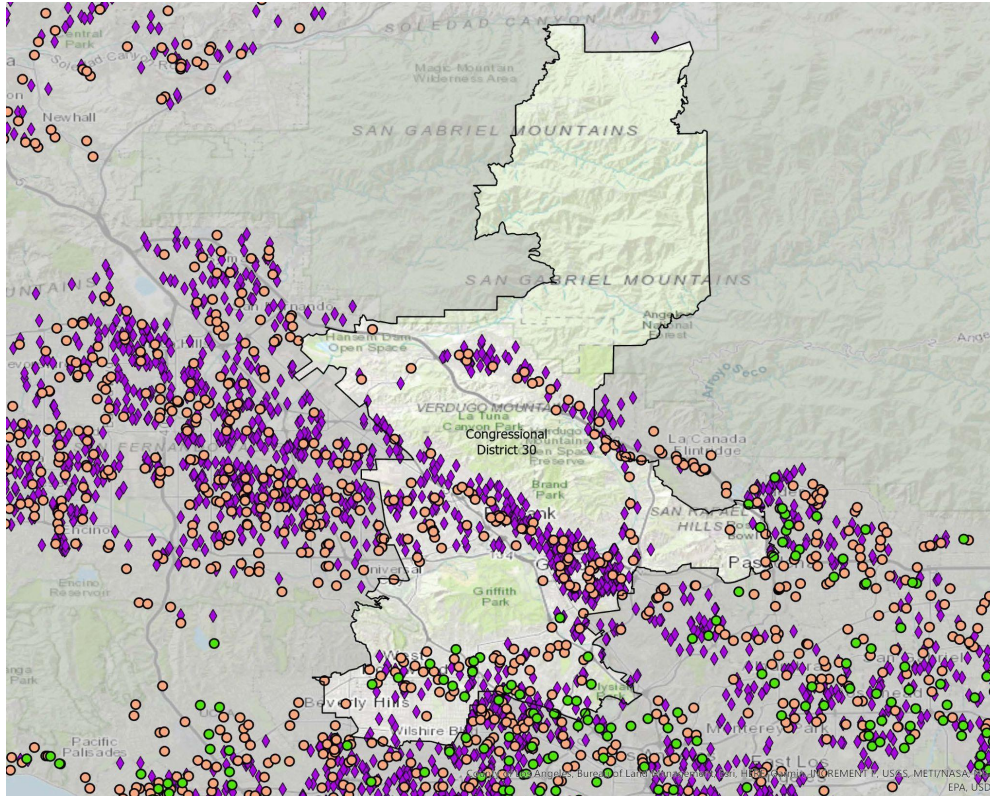
N E T W O R K

Total Number of Child Care Facilities: 556

- Non-Subsidized Child Care Centers: 157
- Subsidized Child Care Centers: 20
- ◆ Family Child Care Homes: 379

Licensed child care provider data were collected from child care resource and referral (CCR&R) agencies which are state funded community-based organizations that provide on-the-ground child care information and family support services. CCR&R agencies collect local child care supply and demand data.

For statewide and county level data, please visit our [2023 Child Care Portfolio](#).



Source: California Child Care Portfolio, California Child Care Resource & Referral Network (2023).

Note: Subsidized child care centers include those with a direct contract with a local/state/federal agency. Subsidy data do not include programs that accept vouchers.

Congressional District 31

Licensed Child Care Providers 2023

California Child Care Resource & Referral

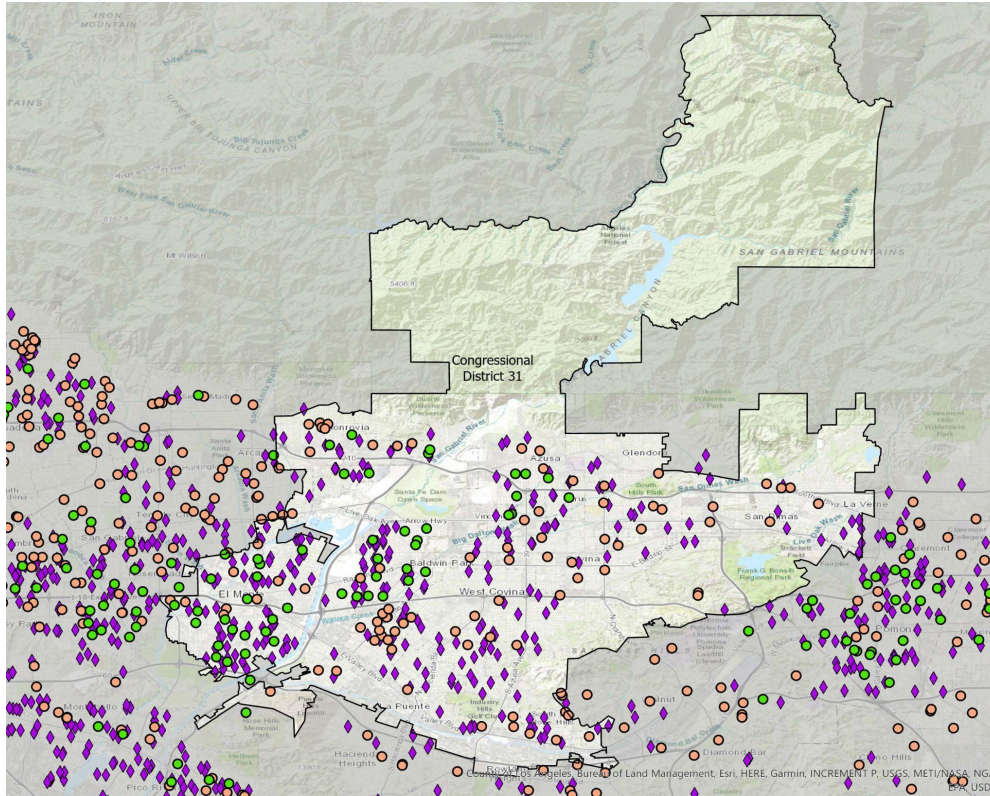
N E T W O R K

Total Number of Child Care Facilities: 392

- Non-Subsidized Child Care Centers: 93
- Subsidized Child Care Centers: 51
- ◆ Family Child Care Homes: 248

Licensed child care provider data were collected from child care resource and referral (CCR&R) agencies which are state funded community-based organizations that provide on-the-ground child care information and family support services. CCR&R agencies collect local child care supply and demand data.

For statewide and county level data, please visit our [2023 Child Care Portfolio](#).



Source: California Child Care Portfolio, California Child Care Resource & Referral Network (2023).

Note: Subsidized child care centers include those with a direct contract with a local/state/federal agency. Subsidy data do not include programs that accept vouchers.

Congressional District 32

Licensed Child Care Providers 2023

California Child Care Resource & Referral

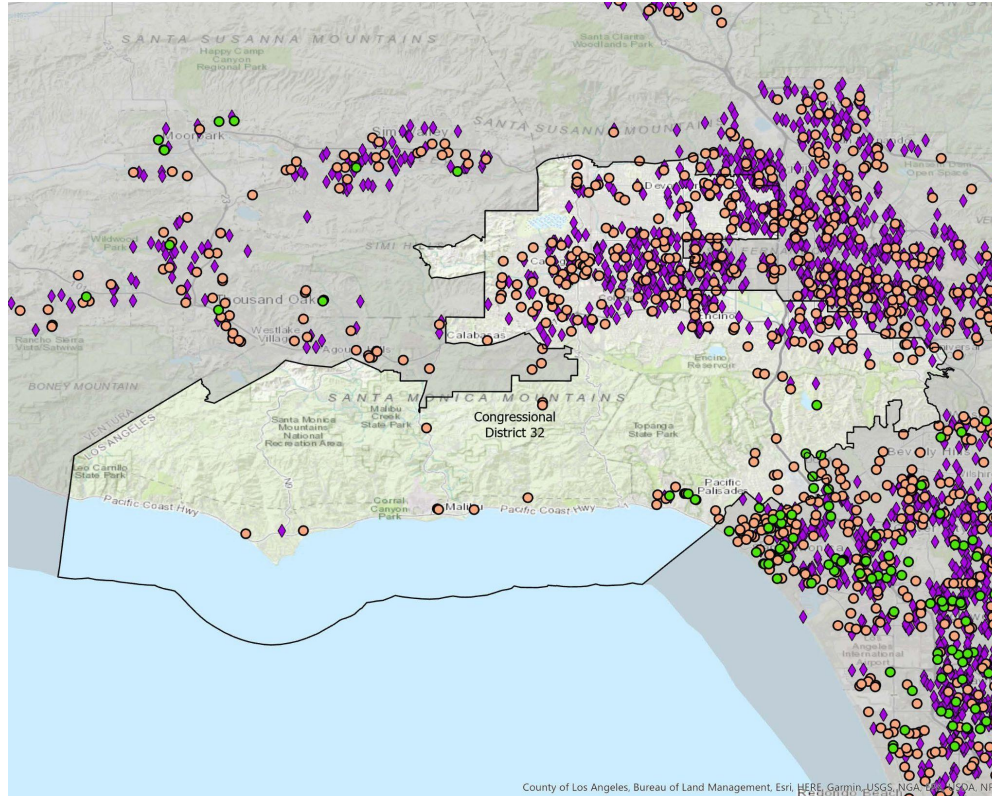
N E T W O R K

Total Number of Child Care Facilities: 538

- Non-Subsidized Child Care Centers: 226
- Subsidized Child Care Centers: 6
- ◆ Family Child Care Homes: 306

Licensed child care provider data were collected from child care resource and referral (CCR&R) agencies which are state funded community-based organizations that provide on-the-ground child care information and family support services. CCR&R agencies collect local child care supply and demand data.

For statewide and county level data, please visit our [2023 Child Care Portfolio](#).



Source: California Child Care Portfolio, California Child Care Resource & Referral Network (2023).

Note: Subsidized child care centers include those with a direct contract with a local/state/federal agency. Subsidy data do not include programs that accept vouchers.

Congressional District 33

Licensed Child Care Providers 2023

California Child Care Resource & Referral

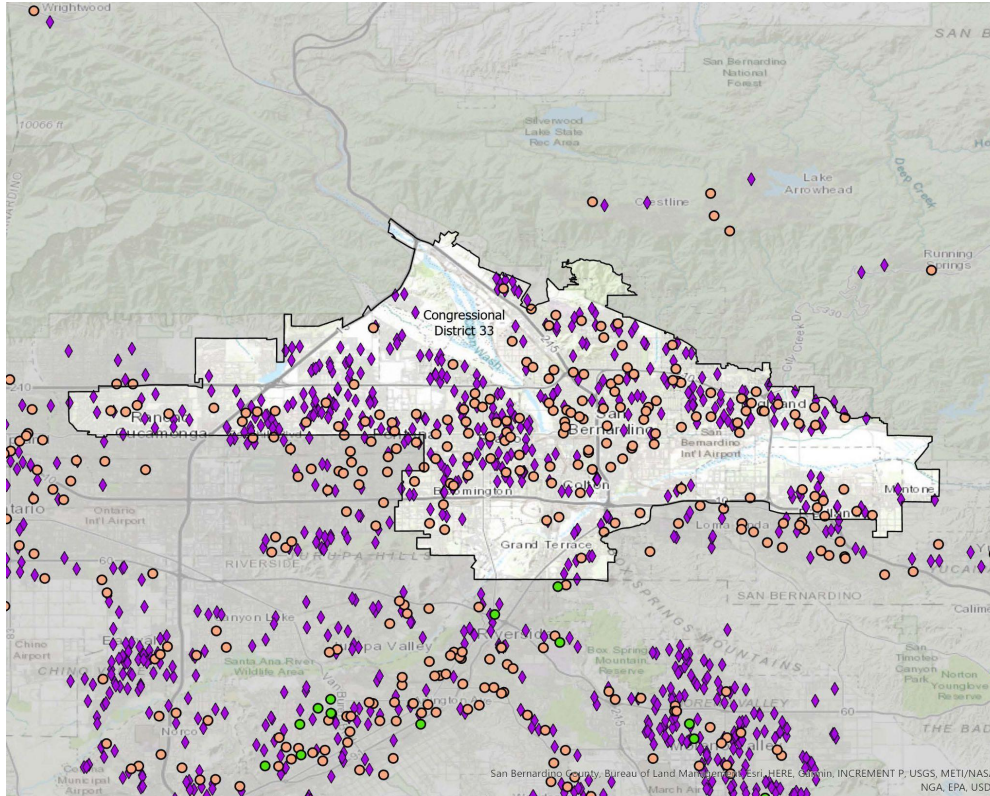
NETWORK

Total Number of Child Care Facilities: 482

- Non-Subsidized Child Care Centers: 145
- Subsidized Child Care Centers: 0
- ◆ Family Child Care Homes: 337

Licensed child care provider data were collected from child care resource and referral (CCR&R) agencies which are state funded community-based organizations that provide on-the-ground child care information and family support services. CCR&R agencies collect local child care supply and demand data.

For statewide and county level data, please visit our [2023 Child Care Portfolio](#).



Source: California Child Care Portfolio, California Child Care Resource & Referral Network (2023).

Note: Subsidized child care centers include those with a direct contract with a local/state/federal agency. Subsidy data do not include programs that accept vouchers.

Congressional District 34

Licensed Child Care Providers 2023

California Child Care Resource & Referral

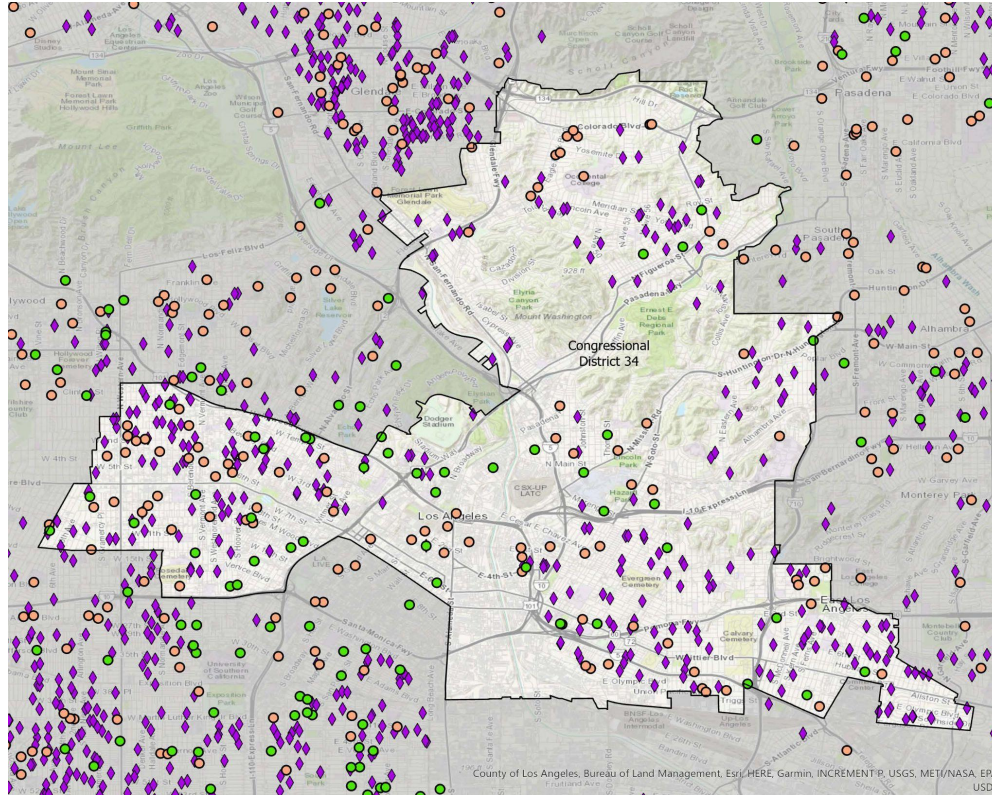
NETWORK

Total Number of Child Care Facilities: 408

- Non-Subsidized Child Care Centers: 88
- Subsidized Child Care Centers: 42
- ◆ Family Child Care Homes: 278

Licensed child care provider data were collected from child care resource and referral (CCR&R) agencies which are state funded community-based organizations that provide on-the-ground child care information and family support services. CCR&R agencies collect local child care supply and demand data.

For statewide and county level data, please visit our [2023 Child Care Portfolio](#).



Source: California Child Care Portfolio, California Child Care Resource & Referral Network (2023).

Note: Subsidized child care centers include those with a direct contract with a local/state/federal agency. Subsidy data do not include programs that accept vouchers.

Congressional District 35

Licensed Child Care Providers 2023

California Child Care Resource & Referral

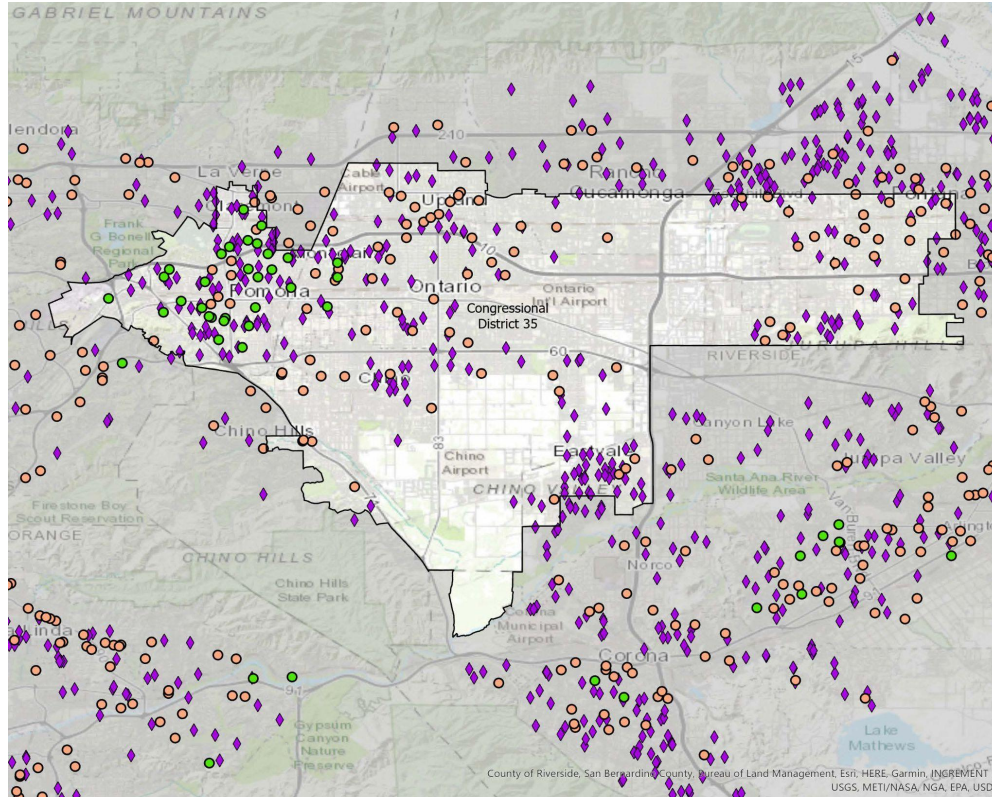
NETWORK

Total Number of Child Care Facilities: 380

- Non-Subsidized Child Care Centers: 107
- Subsidized Child Care Centers: 39
- ◆ Family Child Care Homes: 234

Licensed child care provider data were collected from child care resource and referral (CCR&R) agencies which are state funded community-based organizations that provide on-the-ground child care information and family support services. CCR&R agencies collect local child care supply and demand data.

For statewide and county level data, please visit our [2023 Child Care Portfolio](#).

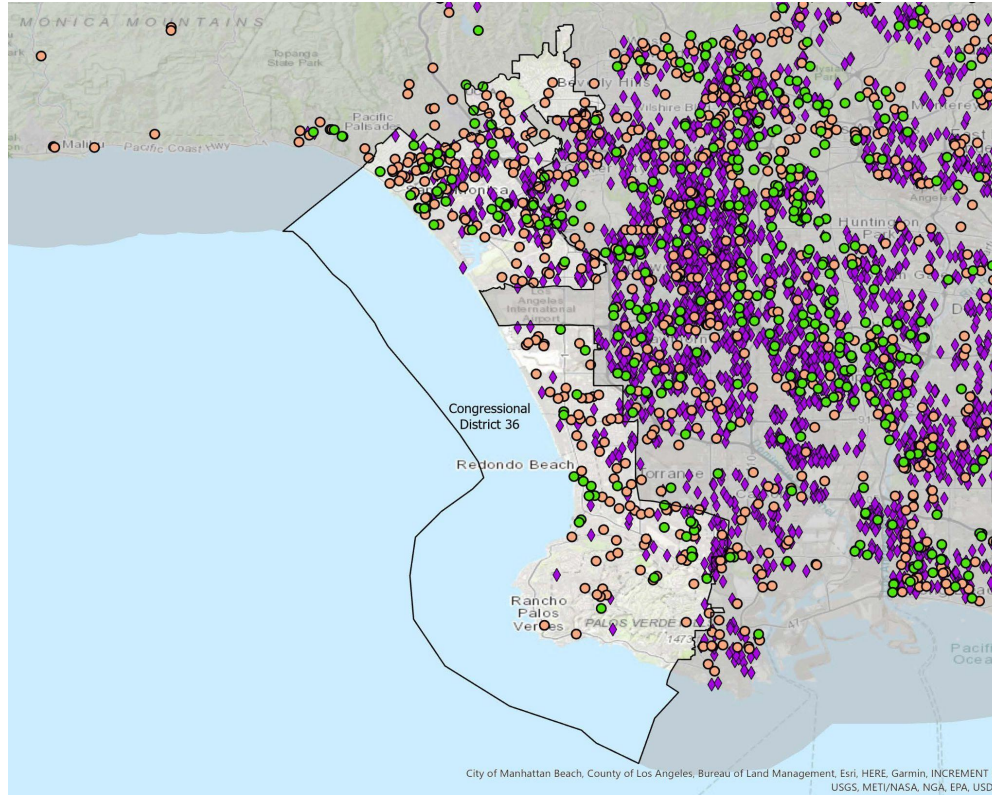


Source: California Child Care Portfolio, California Child Care Resource & Referral Network (2023).

Note: Subsidized child care centers include those with a direct contract with a local/state/federal agency. Subsidy data do not include programs that accept vouchers.

Congressional District 36

Licensed Child Care Providers 2023



California Child Care Resource & Referral

N E T W O R K

Total Number of Child Care Facilities: 435

- Non-Subsidized Child Care Centers: 186
- Subsidized Child Care Centers: 59
- ◆ Family Child Care Homes: 190

Licensed child care provider data were collected from child care resource and referral (CCR&R) agencies which are state funded community-based organizations that provide on-the-ground child care information and family support services. CCR&R agencies collect local child care supply and demand data.

For statewide and county level data, please visit our [2023 Child Care Portfolio](#).

Source: California Child Care Portfolio, California Child Care Resource & Referral Network (2023).

Note: Subsidized child care centers include those with a direct contract with a local/state/federal agency. Subsidy data do not include programs that accept vouchers.

Congressional District 37

Licensed Child Care Providers 2023

California Child Care Resource & Referral

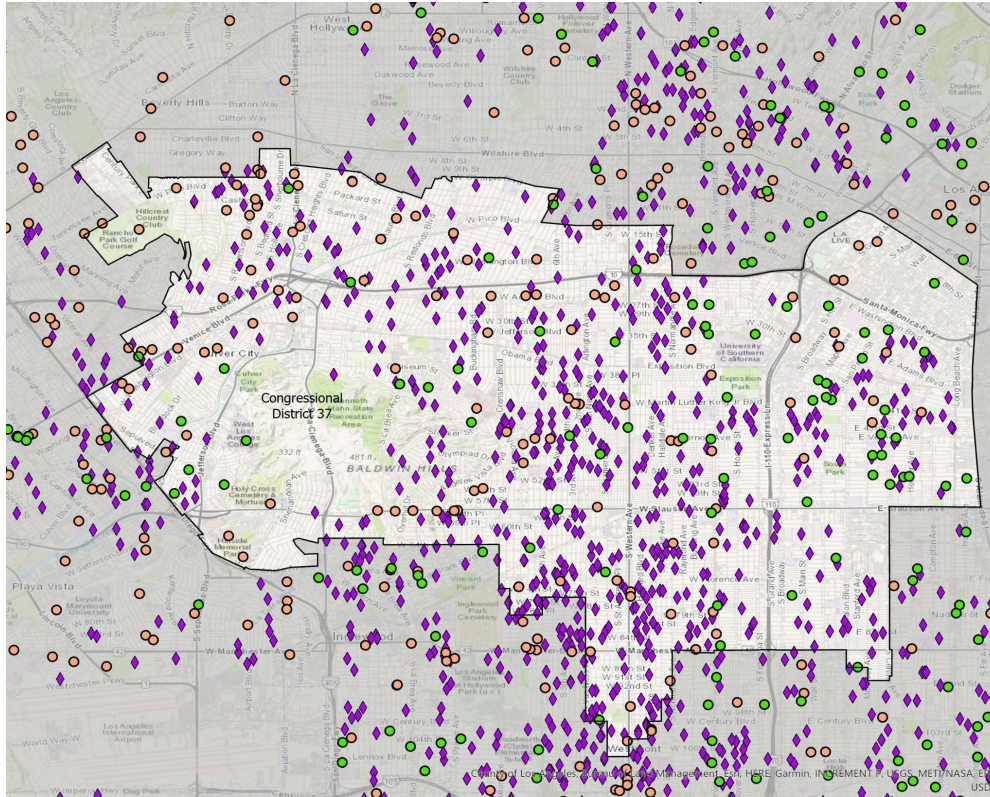
NETWORK

Total Number of Child Care Facilities: 690

- Non-Subsidized Child Care Centers: 111
- Subsidized Child Care Centers: 65
- ◆ Family Child Care Homes: 514

Licensed child care provider data were collected from child care resource and referral (CCR&R) agencies which are state funded community-based organizations that provide on-the-ground child care information and family support services. CCR&R agencies collect local child care supply and demand data.

For statewide and county level data, please visit our [2023 Child Care Portfolio](#).



Source: California Child Care Portfolio, California Child Care Resource & Referral Network (2023).

Note: Subsidized child care centers include those with a direct contract with a local/state/federal agency. Subsidy data do not include programs that accept vouchers.

Congressional District 38

Licensed Child Care Providers 2023

California Child Care Resource & Referral

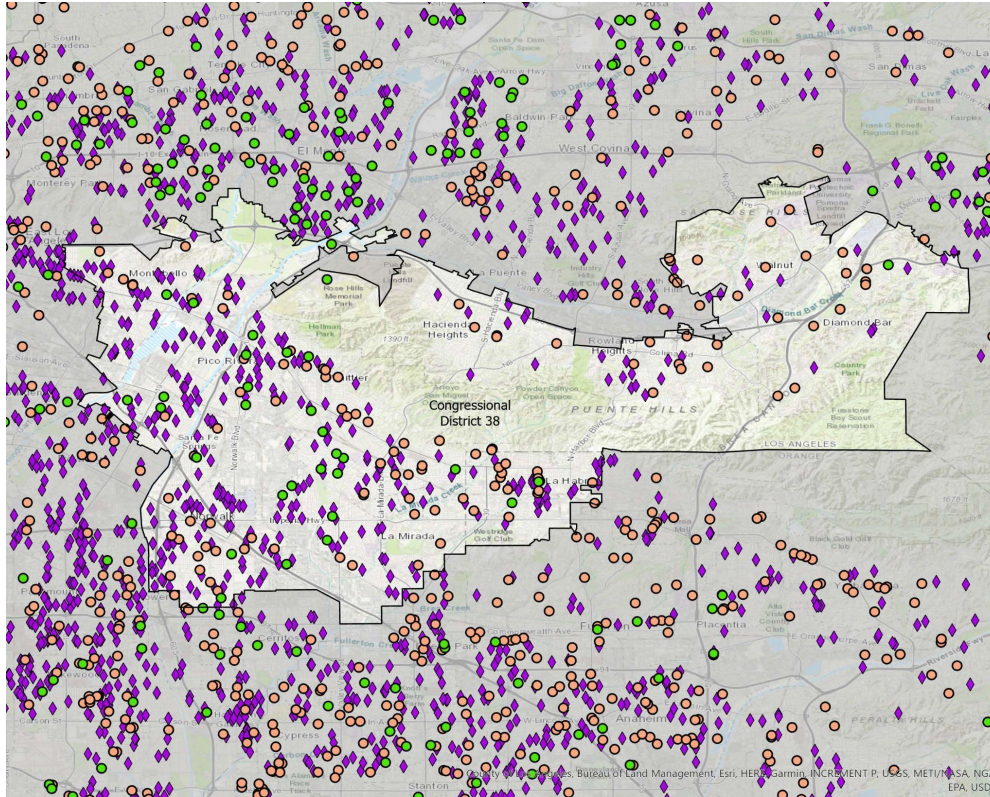
N E T W O R K

Total Number of Child Care Facilities: 456

- Non-Subsidized Child Care Centers: 119
- Subsidized Child Care Centers: 32
- ◆ Family Child Care Homes: 305

Licensed child care provider data were collected from child care resource and referral (CCR&R) agencies which are state funded community-based organizations that provide on-the-ground child care information and family support services. CCR&R agencies collect local child care supply and demand data.

For statewide and county level data, please visit our [2023 Child Care Portfolio](#).



Source: California Child Care Portfolio, California Child Care Resource & Referral Network (2023).

Note: Subsidized child care centers include those with a direct contract with a local/state/federal agency. Subsidy data do not include programs that accept vouchers.

Congressional District 39

Licensed Child Care Providers 2023

California Child Care Resource & Referral

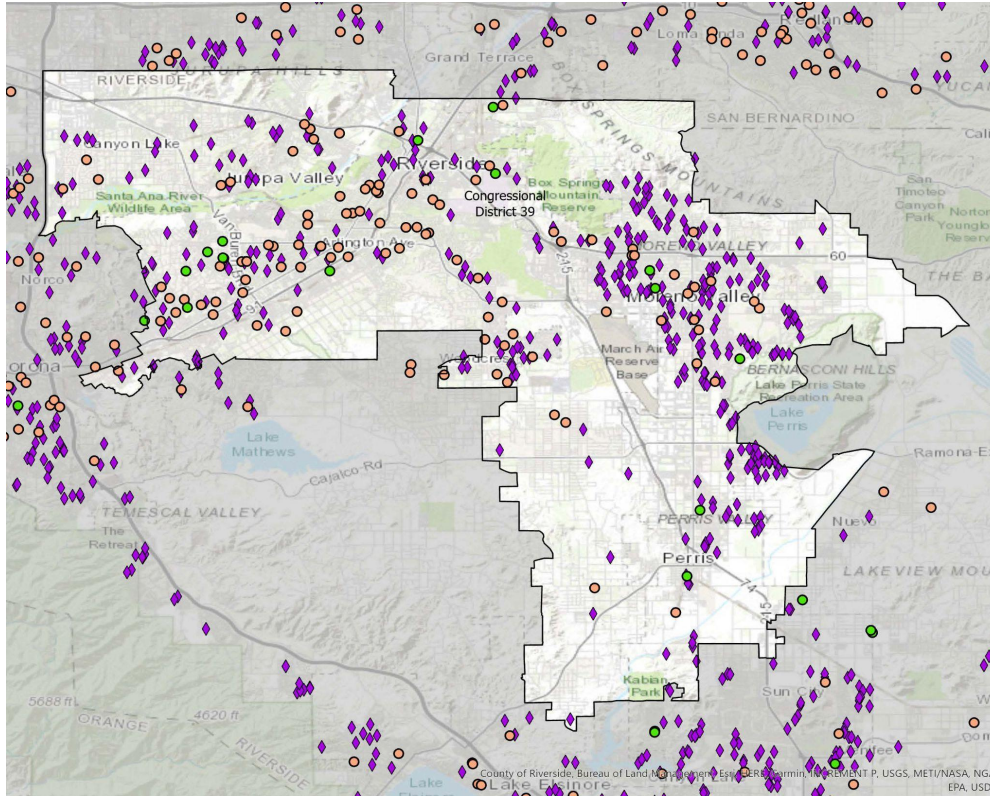
NETWORK

Total Number of Child Care Facilities: 465

- Non-Subsidized Child Care Centers: 99
- Subsidized Child Care Centers: 14
- ◆ Family Child Care Homes: 352

Licensed child care provider data were collected from child care resource and referral (CCR&R) agencies which are state funded community-based organizations that provide on-the-ground child care information and family support services. CCR&R agencies collect local child care supply and demand data.

For statewide and county level data, please visit our [2023 Child Care Portfolio](#).



Source: California Child Care Portfolio, California Child Care Resource & Referral Network (2023).

Note: Subsidized child care centers include those with a direct contract with a local/state/federal agency. Subsidy data do not include programs that accept vouchers.

Congressional District 40

Licensed Child Care Providers 2023

California Child Care Resource & Referral

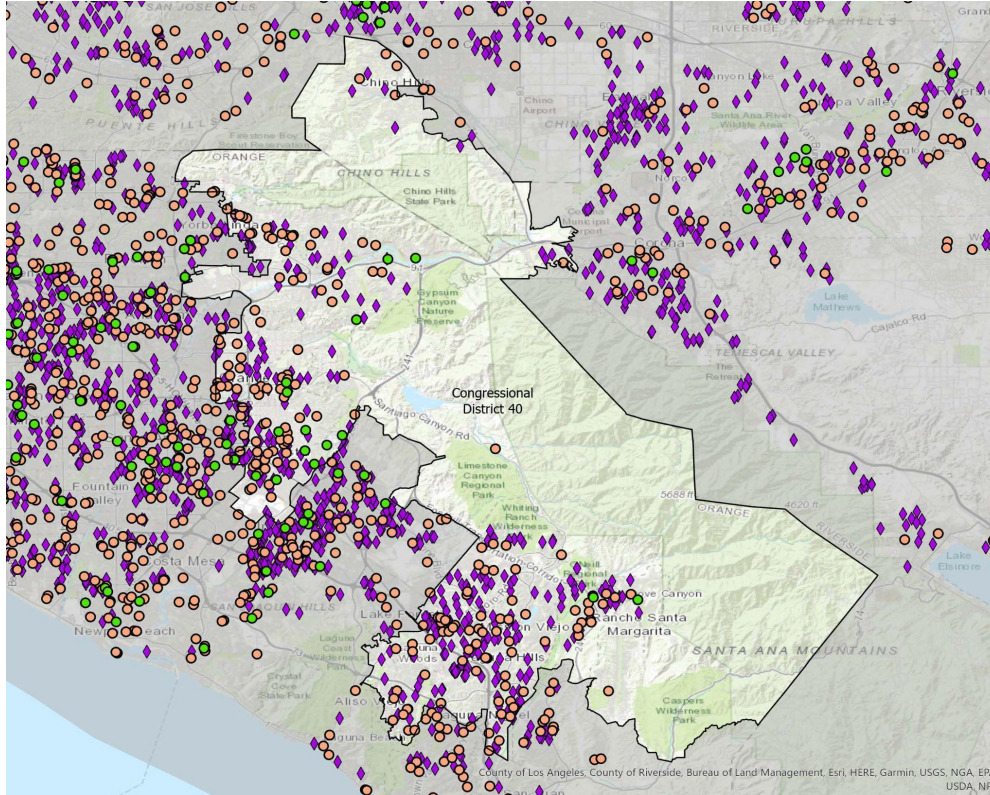
N E T W O R K

Total Number of Child Care Facilities: 479

- Non-Subsidized Child Care Centers: 187
- Subsidized Child Care Centers: 16
- ◆ Family Child Care Homes: 276

Licensed child care provider data were collected from child care resource and referral (CCR&R) agencies which are state funded community-based organizations that provide on-the-ground child care information and family support services. CCR&R agencies collect local child care supply and demand data.

For statewide and county level data, please visit our [2023 Child Care Portfolio](#).



Source: California Child Care Portfolio, California Child Care Resource & Referral Network (2023).

Note: Subsidized child care centers include those with a direct contract with a local/state/federal agency. Subsidy data do not include programs that accept vouchers.

Congressional District 41

Licensed Child Care Providers 2023

California Child Care Resource & Referral

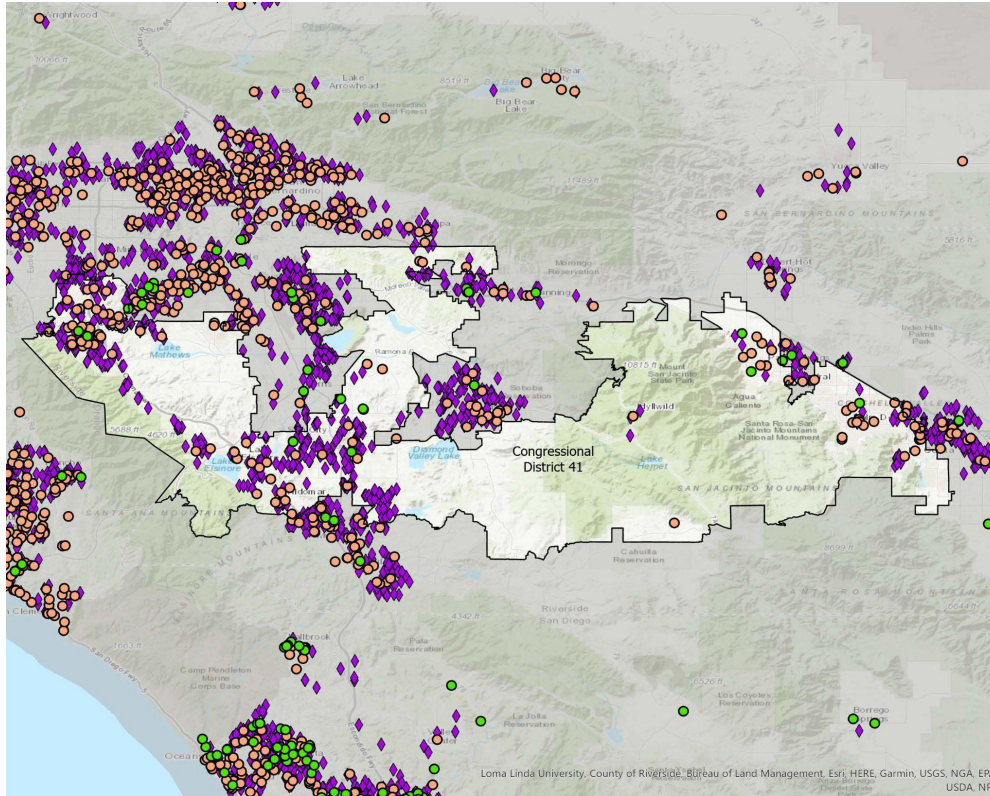
N E T W O R K

Total Number of Child Care Facilities: 480

- Non-Subsidized Child Care Centers: 95
- Subsidized Child Care Centers: 11
- ◆ Family Child Care Homes: 374

Licensed child care provider data were collected from child care resource and referral (CCR&R) agencies which are state funded community-based organizations that provide on-the-ground child care information and family support services. CCR&R agencies collect local child care supply and demand data.

For statewide and county level data, please visit our [2023 Child Care Portfolio](#).



Source: California Child Care Portfolio, California Child Care Resource & Referral Network (2023).

Note: Subsidized child care centers include those with a direct contract with a local/state/federal agency. Subsidy data do not include programs that accept vouchers.

Congressional District 42

Licensed Child Care Providers 2023

California Child Care Resource & Referral

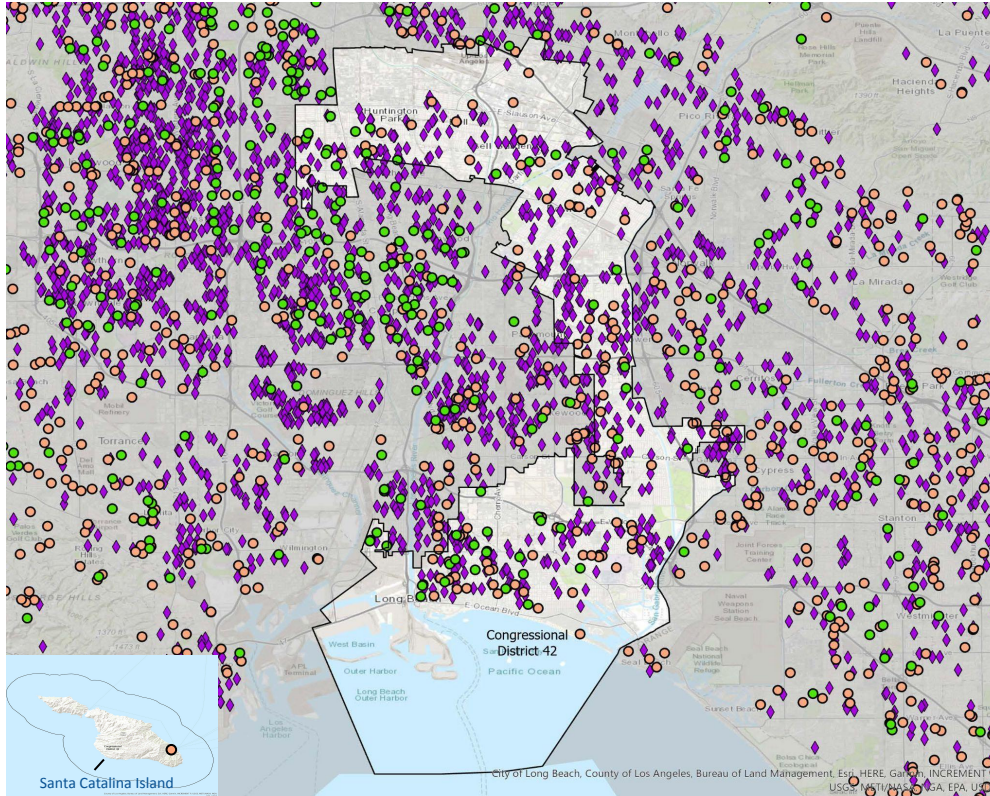
N E T W O R K

Total Number of Child Care Facilities: 470

- Non-Subsidized Child Care Centers: 96
- Subsidized Child Care Centers: 42
- ◆ Family Child Care Homes: 332

Licensed child care provider data were collected from child care resource and referral (CCR&R) agencies which are state funded community-based organizations that provide on-the-ground child care information and family support services. CCR&R agencies collect local child care supply and demand data.

For statewide and county level data, please visit our [2023 Child Care Portfolio](#).

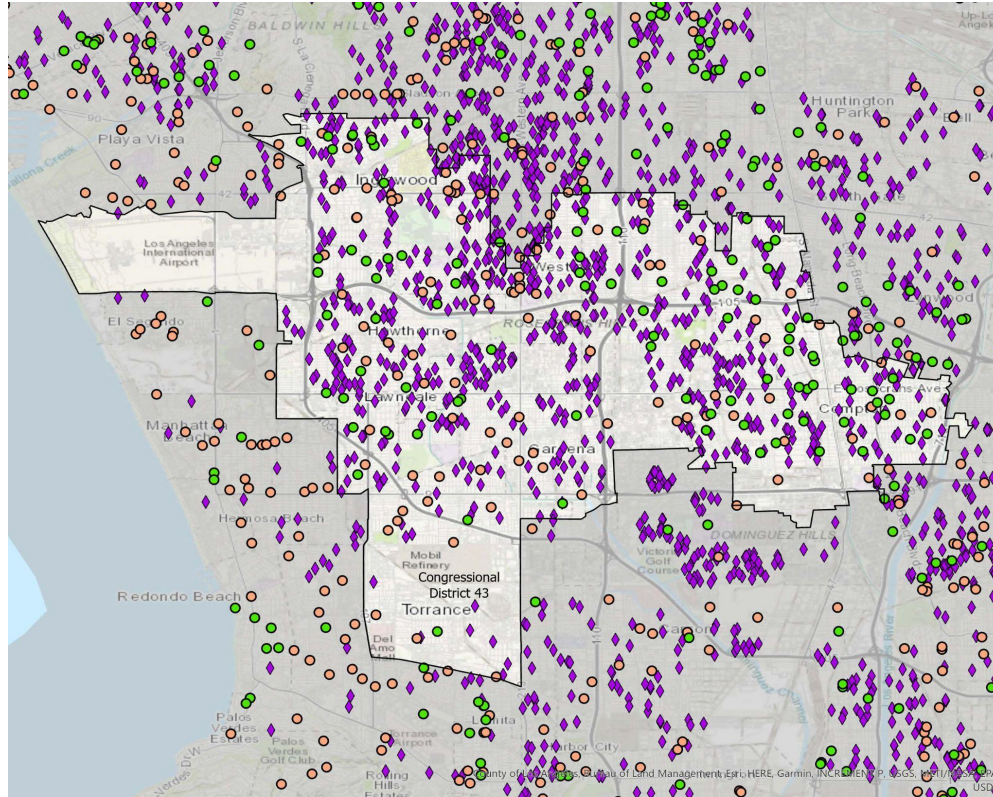


Source: California Child Care Portfolio, California Child Care Resource & Referral Network (2023).

Note: Subsidized child care centers include those with a direct contract with a local/state/federal agency. Subsidy data do not include programs that accept vouchers.

Congressional District 43

Licensed Child Care Providers 2023



California Child Care Resource & Referral

N E T W O R K

Total Number of Child Care Facilities: 816

- Non-Subsidized Child Care Centers: 100
- Subsidized Child Care Centers: 91
- ◆ Family Child Care Homes: 625

Licensed child care provider data were collected from child care resource and referral (CCR&R) agencies which are state funded community-based organizations that provide on-the-ground child care information and family support services. CCR&R agencies collect local child care supply and demand data.

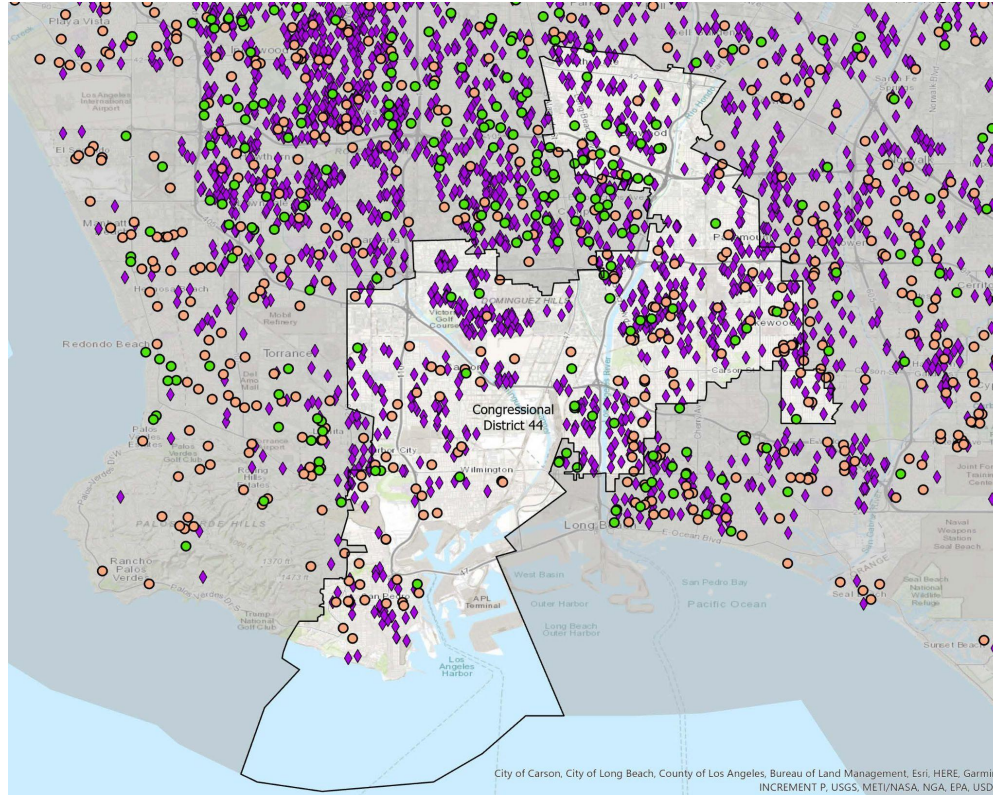
For statewide and county level data, please visit our [2023 Child Care Portfolio](#).

Source: California Child Care Portfolio, California Child Care Resource & Referral Network (2023).

Note: Subsidized child care centers include those with a direct contract with a local/state/federal agency. Subsidy data do not include programs that accept vouchers.

Congressional District 44

Licensed Child Care Providers 2023



California Child Care Resource & Referral

NETWORK

Total Number of Child Care Facilities: 702

- Non-Subsidized Child Care Centers: 102
- Subsidized Child Care Centers: 44
- ◆ Family Child Care Homes: 556

Licensed child care provider data were collected from child care resource and referral (CCR&R) agencies which are state funded community-based organizations that provide on-the-ground child care information and family support services. CCR&R agencies collect local child care supply and demand data.

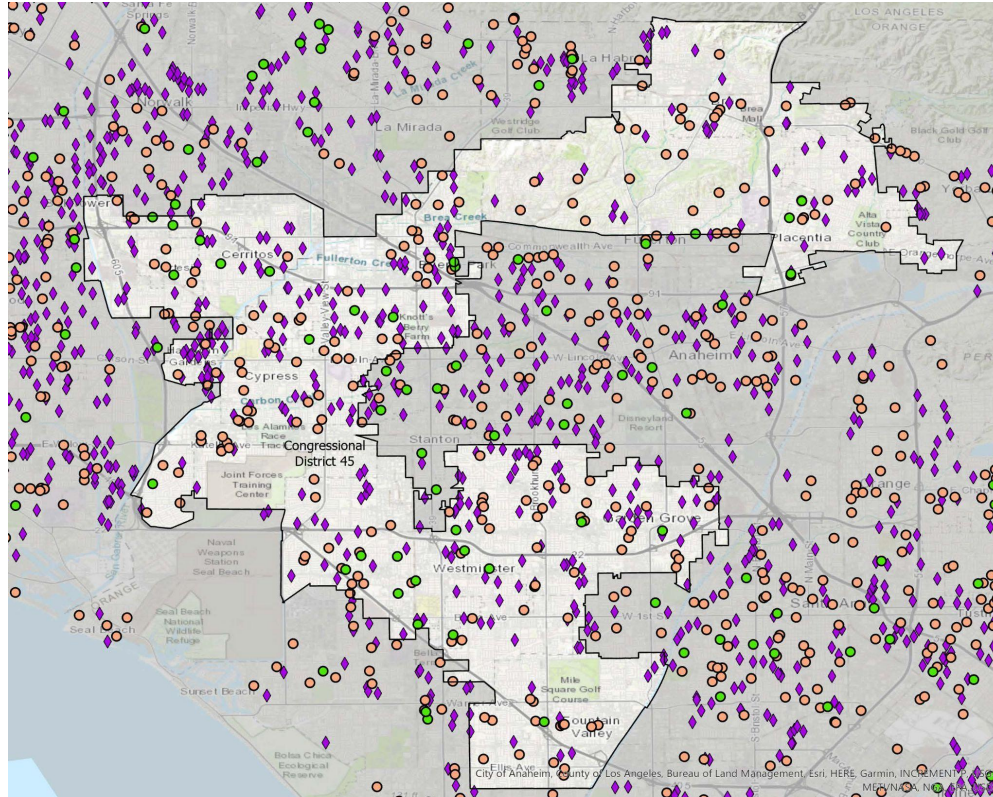
For statewide and county level data, please visit our [2023 Child Care Portfolio](#).

Source: California Child Care Portfolio, California Child Care Resource & Referral Network (2023).

Note: Subsidized child care centers include those with a direct contract with a local/state/federal agency. Subsidy data do not include programs that accept vouchers.

Congressional District 45

Licensed Child Care Providers 2023



California Child Care Resource & Referral

N E T W O R K

Total Number of Child Care Facilities: 474

- Non-Subsidized Child Care Centers: 183
- Subsidized Child Care Centers: 29
- ◆ Family Child Care Homes: 262

Licensed child care provider data were collected from child care resource and referral (CCR&R) agencies which are state funded community-based organizations that provide on-the-ground child care information and family support services. CCR&R agencies collect local child care supply and demand data.

For statewide and county level data, please visit our [2023 Child Care Portfolio](#).

Source: California Child Care Portfolio, California Child Care Resource & Referral Network (2023).

Note: Subsidized child care centers include those with a direct contract with a local/state/federal agency. Subsidy data do not include programs that accept vouchers.

Congressional District 46

Licensed Child Care Providers 2023

California Child Care Resource & Referral

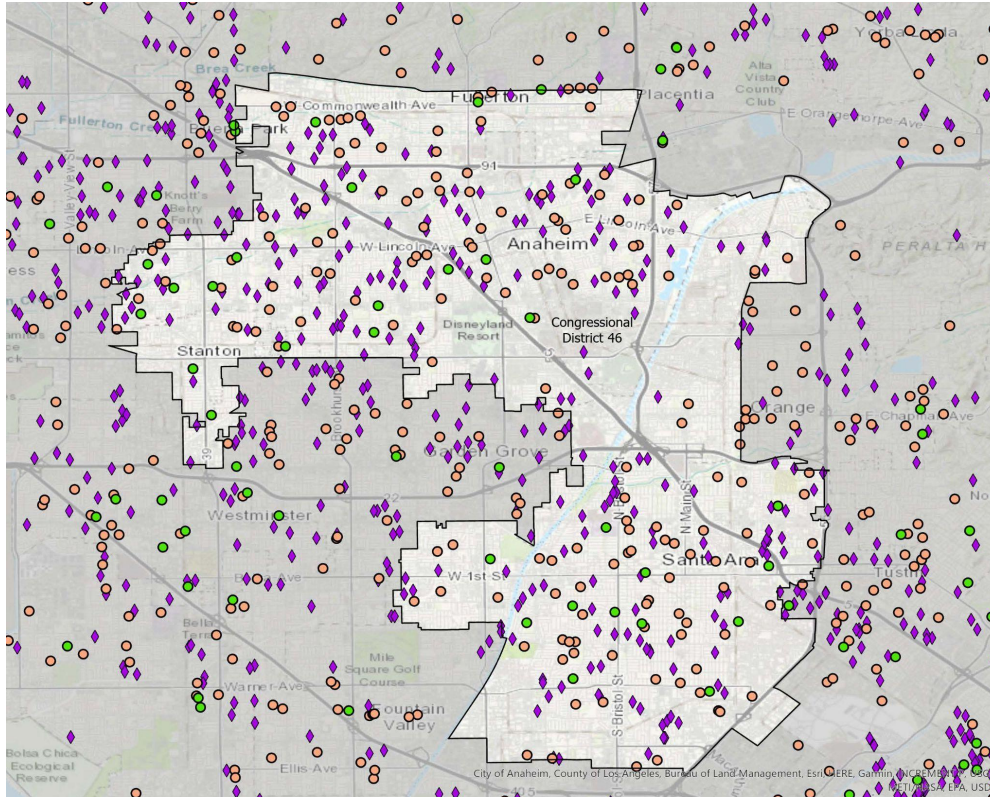
N E T W O R K

Total Number of Child Care Facilities: 397

- Non-Subsidized Child Care Centers: 153
- Subsidized Child Care Centers: 29
- ◆ Family Child Care Homes: 215

Licensed child care provider data were collected from child care resource and referral (CCR&R) agencies which are state funded community-based organizations that provide on-the-ground child care information and family support services. CCR&R agencies collect local child care supply and demand data.

For statewide and county level data, please visit our [2023 Child Care Portfolio](#).

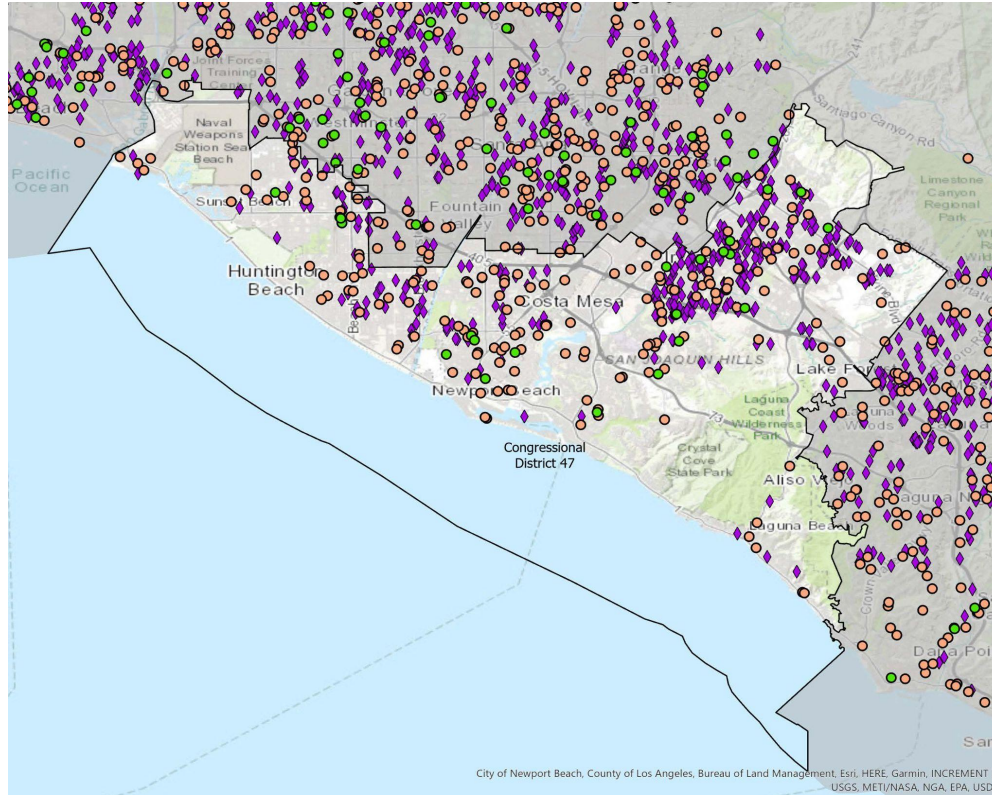


Source: California Child Care Portfolio, California Child Care Resource & Referral Network (2023).

Note: Subsidized child care centers include those with a direct contract with a local/state/federal agency. Subsidy data do not include programs that accept vouchers.

Congressional District 47

Licensed Child Care Providers 2023



California Child Care Resource & Referral

N E T W O R K

Total Number of Child Care Facilities: 505

- Non-Subsidized Child Care Centers: 185
- Subsidized Child Care Centers: 22
- ◆ Family Child Care Homes: 298

Licensed child care provider data were collected from child care resource and referral (CCR&R) agencies which are state funded community-based organizations that provide on-the-ground child care information and family support services. CCR&R agencies collect local child care supply and demand data.

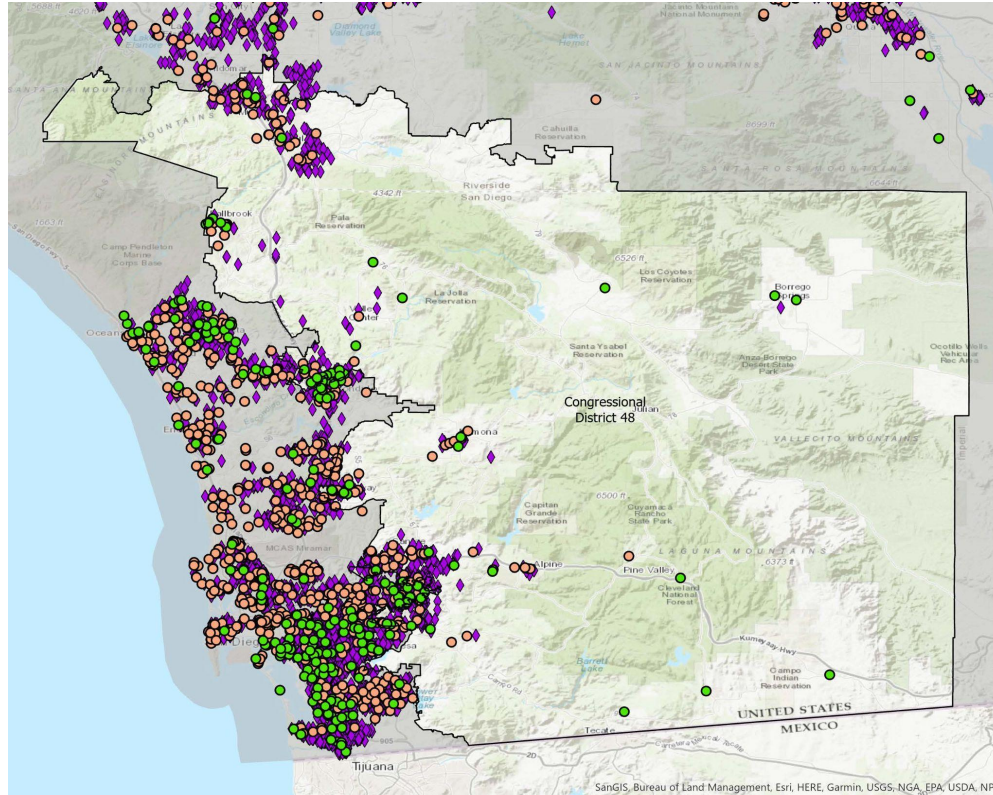
For statewide and county level data, please visit our [2023 Child Care Portfolio](#).

Source: California Child Care Portfolio, California Child Care Resource & Referral Network (2023).

Note: Subsidized child care centers include those with a direct contract with a local/state/federal agency. Subsidy data do not include programs that accept vouchers.

Congressional District 48

Licensed Child Care Providers 2023



California Child Care Resource & Referral

NETWORK

Total Number of Child Care Facilities: 569

- Non-Subsidized Child Care Centers: 123
- Subsidized Child Care Centers: 47
- ◆ Family Child Care Homes: 399

Licensed child care provider data were collected from child care resource and referral (CCR&R) agencies which are state funded community-based organizations that provide on-the-ground child care information and family support services. CCR&R agencies collect local child care supply and demand data.

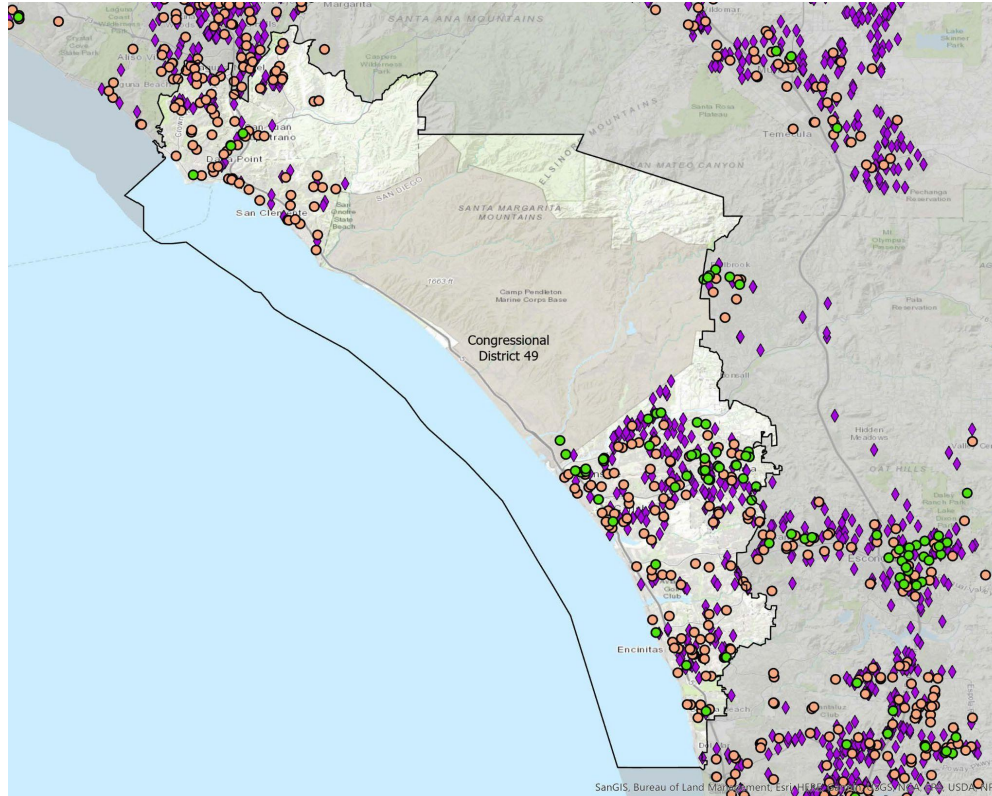
For statewide and county level data, please visit our [2023 Child Care Portfolio](#).

Source: California Child Care Portfolio, California Child Care Resource & Referral Network (2023).

Note: Subsidized child care centers include those with a direct contract with a local/state/federal agency. Subsidy data do not include programs that accept vouchers.

Congressional District 49

Licensed Child Care Providers 2023



California Child Care Resource & Referral

N E T W O R K

Total Number of Child Care Facilities: 454

- Non-Subsidized Child Care Centers: 191
- Subsidized Child Care Centers: 42
- ◆ Family Child Care Homes: 221

Licensed child care provider data were collected from child care resource and referral (CCR&R) agencies which are state funded community-based organizations that provide on-the-ground child care information and family support services. CCR&R agencies collect local child care supply and demand data.

For statewide and county level data, please visit our [2023 Child Care Portfolio](#).

Source: California Child Care Portfolio, California Child Care Resource & Referral Network (2023).

Note: Subsidized child care centers include those with a direct contract with a local/state/federal agency. Subsidy data do not include programs that accept vouchers.

Congressional District 50

Licensed Child Care Providers 2023

California Child Care Resource & Referral

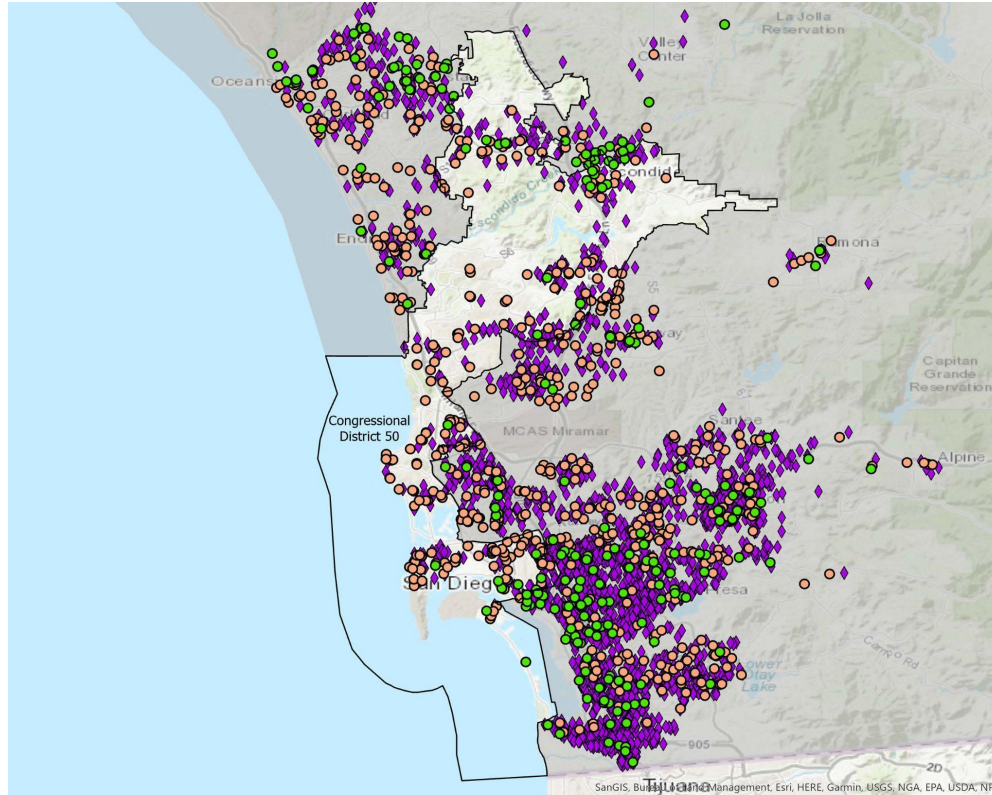
N E T W O R K

Total Number of Child Care Facilities: 520

- Non-Subsidized Child Care Centers: 174
- Subsidized Child Care Centers: 26
- ◆ Family Child Care Homes: 320

Licensed child care provider data were collected from child care resource and referral (CCR&R) agencies which are state funded community-based organizations that provide on-the-ground child care information and family support services. CCR&R agencies collect local child care supply and demand data.

For statewide and county level data, please visit our [2023 Child Care Portfolio](#).



Source: California Child Care Portfolio, California Child Care Resource & Referral Network (2023).

Note: Subsidized child care centers include those with a direct contract with a local/state/federal agency. Subsidy data do not include programs that accept vouchers.

Congressional District 51

Licensed Child Care Providers 2023

California Child Care Resource & Referral

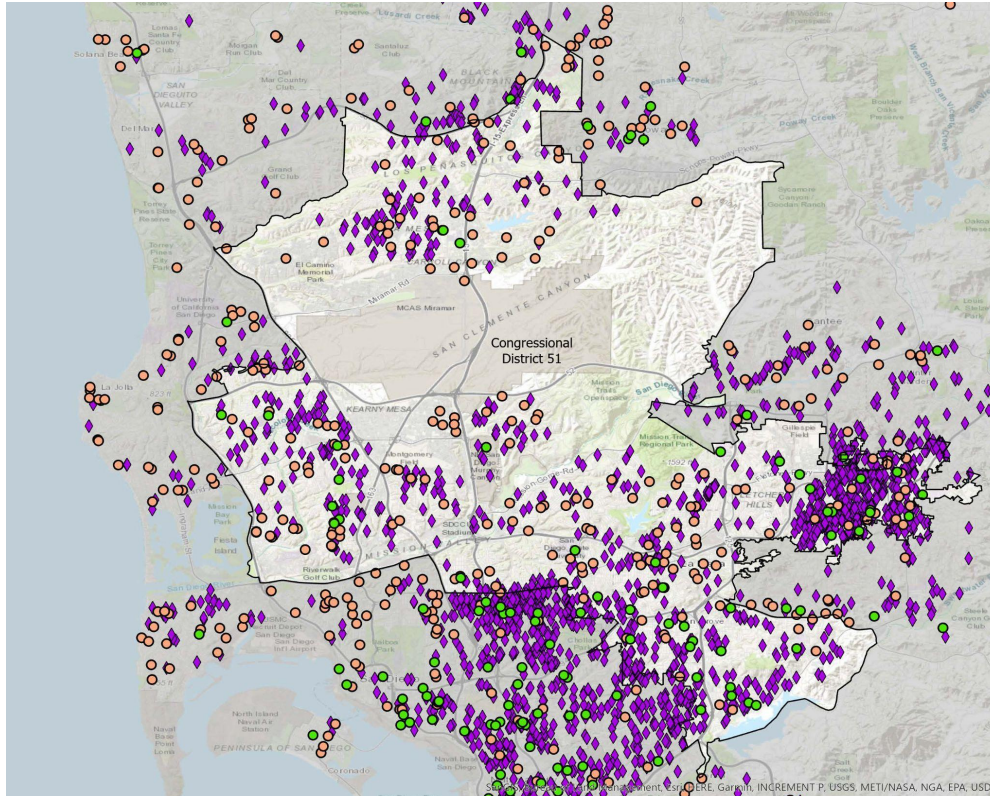
N E T W O R K

Total Number of Child Care Facilities: 1378

- Non-Subsidized Child Care Centers: 190
- Subsidized Child Care Centers: 50
- ◆ Family Child Care Homes: 1138

Licensed child care provider data were collected from child care resource and referral (CCR&R) agencies which are state funded community-based organizations that provide on-the-ground child care information and family support services. CCR&R agencies collect local child care supply and demand data.

For statewide and county level data, please visit our [2023 Child Care Portfolio](#).

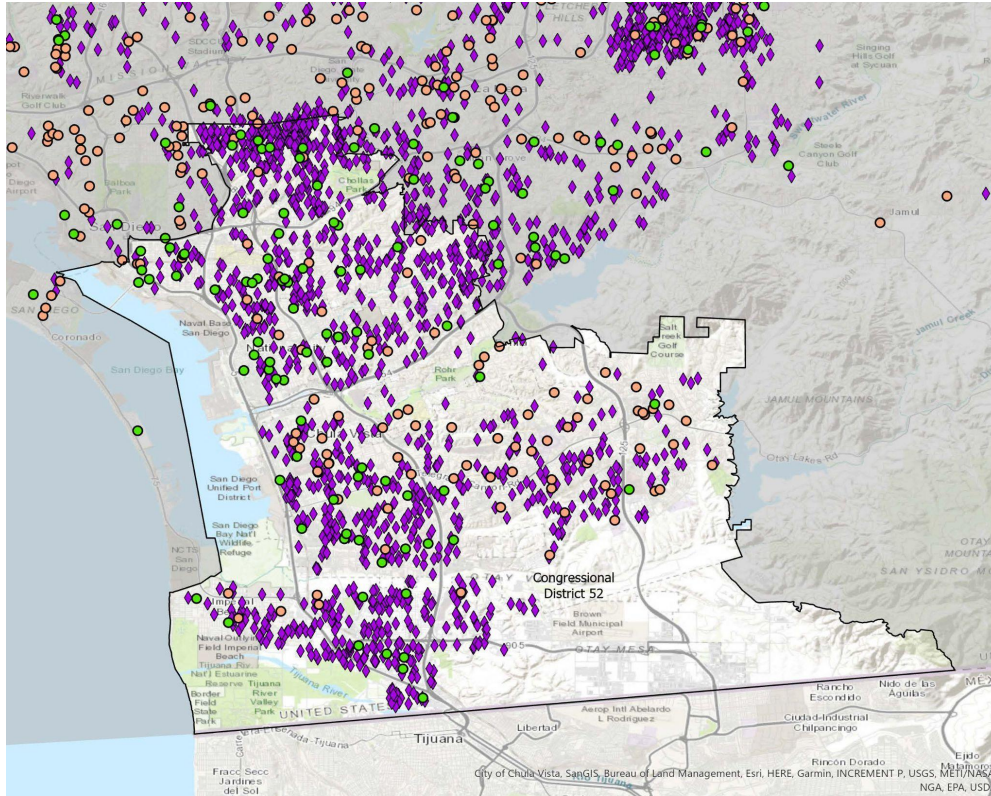


Source: California Child Care Portfolio, California Child Care Resource & Referral Network (2023).

Note: Subsidized child care centers include those with a direct contract with a local/state/federal agency. Subsidy data do not include programs that accept vouchers.

Congressional District 52

Licensed Child Care Providers 2023



California Child Care Resource & Referral

N E T W O R K

Total Number of Child Care Facilities: 1486

- Non-Subsidized Child Care Centers: 89
- Subsidized Child Care Centers: 78
- ◆ Family Child Care Homes: 1319

Licensed child care provider data were collected from child care resource and referral (CCR&R) agencies which are state funded community-based organizations that provide on-the-ground child care information and family support services. CCR&R agencies collect local child care supply and demand data.

For statewide and county level data, please visit our [2023 Child Care Portfolio](#).

Source: California Child Care Portfolio, California Child Care Resource & Referral Network (2023).

Note: Subsidized child care centers include those with a direct contract with a local/state/federal agency. Subsidy data do not include programs that accept vouchers.